



Gledhow Gardens, South Kensington, London, SW5

£1,400 per week* / £6,066.67 per month – Unfurnished

A spacious, beautifully refurbished two bedroom apartment with direct lift-access and private South-facing balcony, overlooking communal gardens.

2 Bedrooms | 1 Reception Room | 2 Bathrooms | Balcony | Second Floor Flat | Lift | Access to Communal Garden (by separate arrangement) | 1,099 Approx sq ft | EPC: C

APPLICANT FEES MAY BE APPLICABLE
DEPOSIT OF 6 WEEKS' RENT
HOLDING DEPOSIT OF 1 WEEK'S RENT

Winkworth

winkworth.co.uk

for every step...



DESCRIPTION

Located on the second floor of an attractive period building, this superb property has been renovated to an exceptional standard throughout, with wooden-flooring and high-end fixtures and fittings.

The large open-plan kitchen/reception room is located to the rear of the building, with double doors leading out to a balcony with views over the beautiful communal gardens.

The two double bedrooms benefit from ample built-in storage and two contemporary bathrooms (on en-suite).

The apartment is available from the beginning of January on an unfurnished basis.



ACCOMMODATION

2 Bedrooms, 1 Reception Room,
2 Bathrooms, Balcony, Second Floor Flat,
Lift, Access to Communal Garden (by
separate arrangement), Unfurnished,
1,099 Approx Sq ft

COUNCIL TAX BAND

Band G



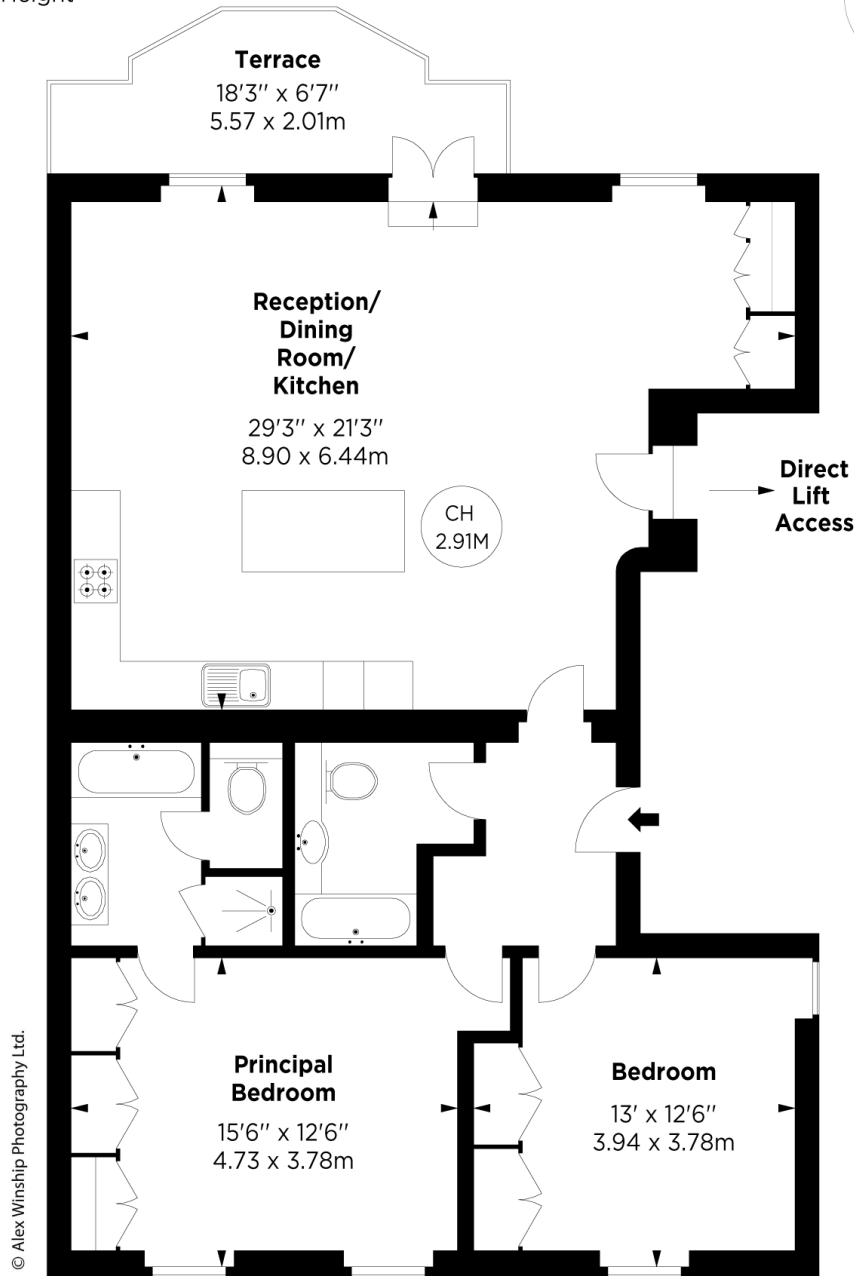
Energy Efficiency Rating		
	Current	Potential
Very energy efficient - lower running costs		
(92+) A		
(81-91) B	82	82
(69-80) C		
(55-68) D		
(39-54) E		
(21-38) F		
(1-20) G		
Not energy efficient - higher running costs		
England, Scotland & Wales	EU Directive 2002/91/EC	

Gledhow Gardens, SW5

APPROX. GROSS INTERNAL AREA *
1099 Sq Ft - 102.10 Sq M

This floorplan is for GUIDANCE ONLY and NOT FOR VALUATION purposes.

Key :
CH - Ceiling Height



SECOND FLOOR

**ALEX
WINSHIP**
Photography

* Floorplan for guidance only, not to scale or valuations purposes. It must not be relied upon as a statement of fact. All measurements and areas are approximate and have been prepared in accordance with the current edition of the RICS Code of Measuring Practice.



This floorplan is for illustration purposes only and is not to scale. The position and size of doors, windows, appliances and other features are approximate.

**Please note, the rent cannot be paid on a weekly basis*

South Kensington Lettings | 020 7370 6767 | lettings.southken@winkworth.co.uk

winkworth.co.uk



for every step...

Winkworth wishes to inform prospective buyers and tenants that these particulars are a guide and act as information only. All our details are given in good faith and believed to be correct at the time of printing but they don't form part of an offer or contract. No Winkworth employee has authority to make or give any representation or warranty in relation to this property. All fixtures and fittings, whether fitted or not are deemed removable by the vendor unless stated otherwise and room sizes are measured between internal wall surfaces, including furnishings.