



8 Grove Street, Great Hale, Sleaford, Lincolnshire, NG34

£40,000 To be advised

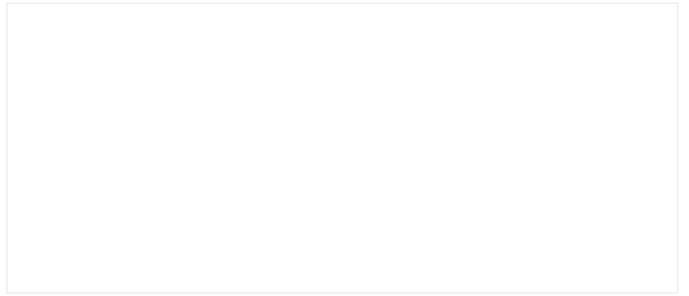
Being sold via Secure Sale online bidding. Terms & Conditions apply. Starting Bid £40,000.

This property will be legally prepared enabling any interested buyer to secure the property immediately once their bid/offer has been accepted. Ultimately a transparent process which provides speed, security and certainty for all parties.

A run down former shop in the village of Great Hale.

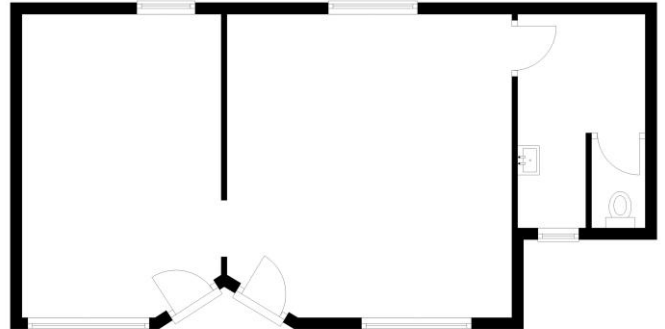
Modern Auction | Sold Via Secure Sale | Immediate 'Exchange of Contracts' Available |
Run Down Former Shop | Offering Scope for Numerous Uses | Possible Conversion to
Residential Subject to Consents

This floorplan is for illustration purposes only and is not to scale. The position and size of doors, windows, appliances and other features are approximate.



Ground Floor

Approx. 51.2 sq. metres (550.8 sq. feet)



Total area: approx. 51.2 sq. metres (550.8 sq. feet)