



**PELHAM COURT, CHELSEA, SW3 £825 PER WEEK  
FURNISHED OR UNFURNISHED**

## **A SPACIOUS TWO BEDROOM APARTMENT LOCATED IN THE PORTERED BUILDING ON THE FULHAM ROAD**

**Knightsbridge & Chelsea | 0207 589 6616 | [knightsbridge@winkworth.co.uk](mailto:knightsbridge@winkworth.co.uk)**

**Winkworth**

Tenant Fees Apply: Details of fees for tenant referencing, tenancy agreement admin fees and renewal fees are available on the Winkworth website and the link can be found with the displayed rent for the property. Tenants should ensure they are fully conversant with these upfront fees and other costs that are involved at the outset of the tenancy before making an offer to rent and your local Winkworth office will provide written details upon request.

*[winkworth.co.uk](http://winkworth.co.uk)*

See things differently



## DESCRIPTION:

The flat comprises of two double bedrooms, and a good sized reception/dining room with views over the communal gardens to the rear. The flat also benefits from two bathrooms, one shower room and another well proportioned bathroom, to include a shower over bath.

The property is available to rent furnished or unfurnished.

South Kensington boasts numerous shops and restaurants. The underground station is on the District, Circle and Piccadilly lines making it an excellent location for access to both the City and West London.

- Reception Room
- Two Bathrooms
- Two bedrooms
- Third Floor with Lift
- Residents Parking
- 739 Approx Sq Ft
- EPC - C

**Winkworth**

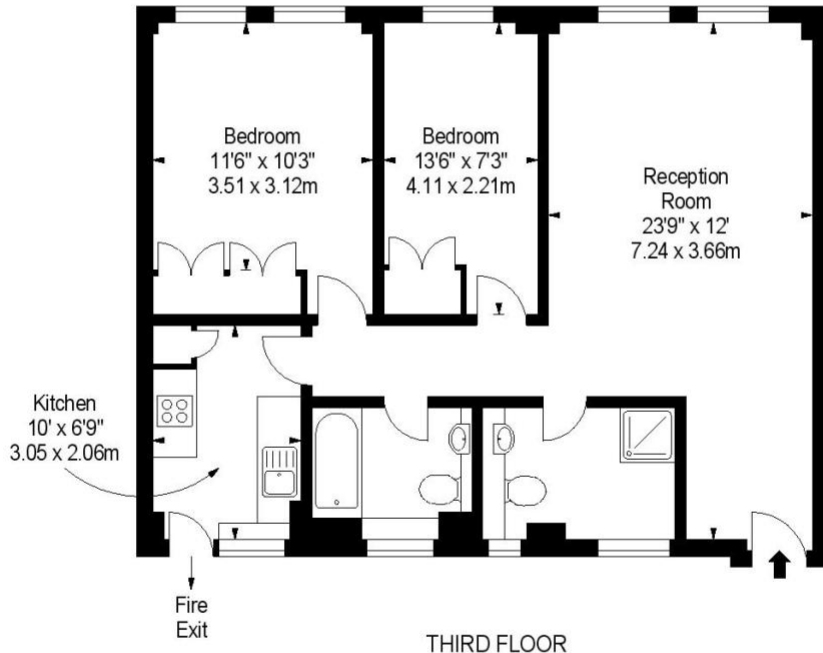


**Winkworth**

# 42 PELHAM COURT, SW3

APPROX. GROSS INTERNAL AREA\*  
707 Ft<sup>2</sup> - 65.68 M<sup>2</sup>

ILLUSTRATION FOR IDENTIFICATION PURPOSES ONLY. NOT TO SCALE  
\* As Defined by RICS - Code of Measuring Practice

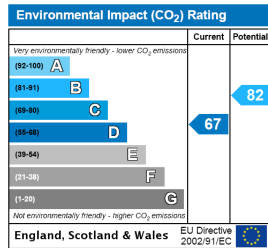
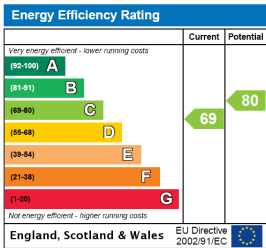


**BKR**

[www.bkrfloorplans.co.uk](http://www.bkrfloorplans.co.uk)  
T: 0845 257 2023  
© BKR 2010

[1.3.2.29] [Pelham Court 42.pdf] [Page 1 of 1]

This floorplan is for illustration purposes only and is not to scale. The position and size of doors, windows, appliances and other features are approximate.



Knightsbridge & Chelsea | 0207 589 6616 | [knightsbridge@winkworth.co.uk](mailto:knightsbridge@winkworth.co.uk)



[winkworth.co.uk](http://winkworth.co.uk)

See things differently

Winkworth wishes to inform prospective buyers and tenants that these particulars are a guide and act as information only. All our details are given in good faith and believed to be correct at the time of printing but they don't form part of an offer or contract. No Winkworth employee has authority to make or give any representation or warranty in relation to this property. All fixtures and fittings, whether fitted or not are deemed removable by the vendor unless stated otherwise and room sizes are measured between internal wall surfaces, including furnishings.