

SPEY ROAD, READING, BERKSHIRE, RG30 4JA
£2,100 PER MONTH FURNISHED OR UNFURNISHED

THREE BEDROOM TOWN HOUSE IN TILEHURST. AVAILABLE 3RD MARCH.

Reading | 0118 4022 300 | reading@winkworth.co.uk

Winkworth

for every step...

winkworth.co.uk



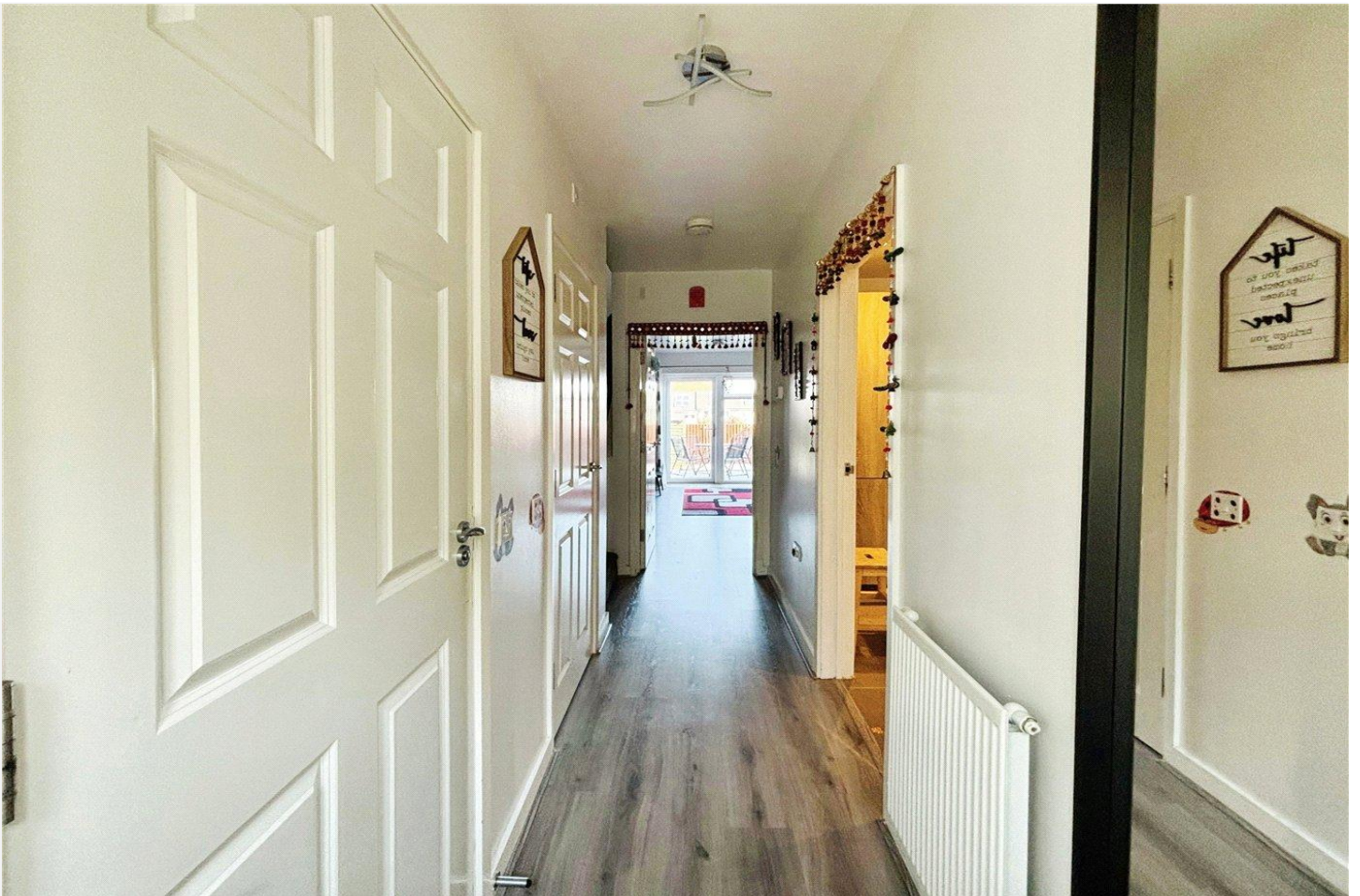
DESCRIPTION:

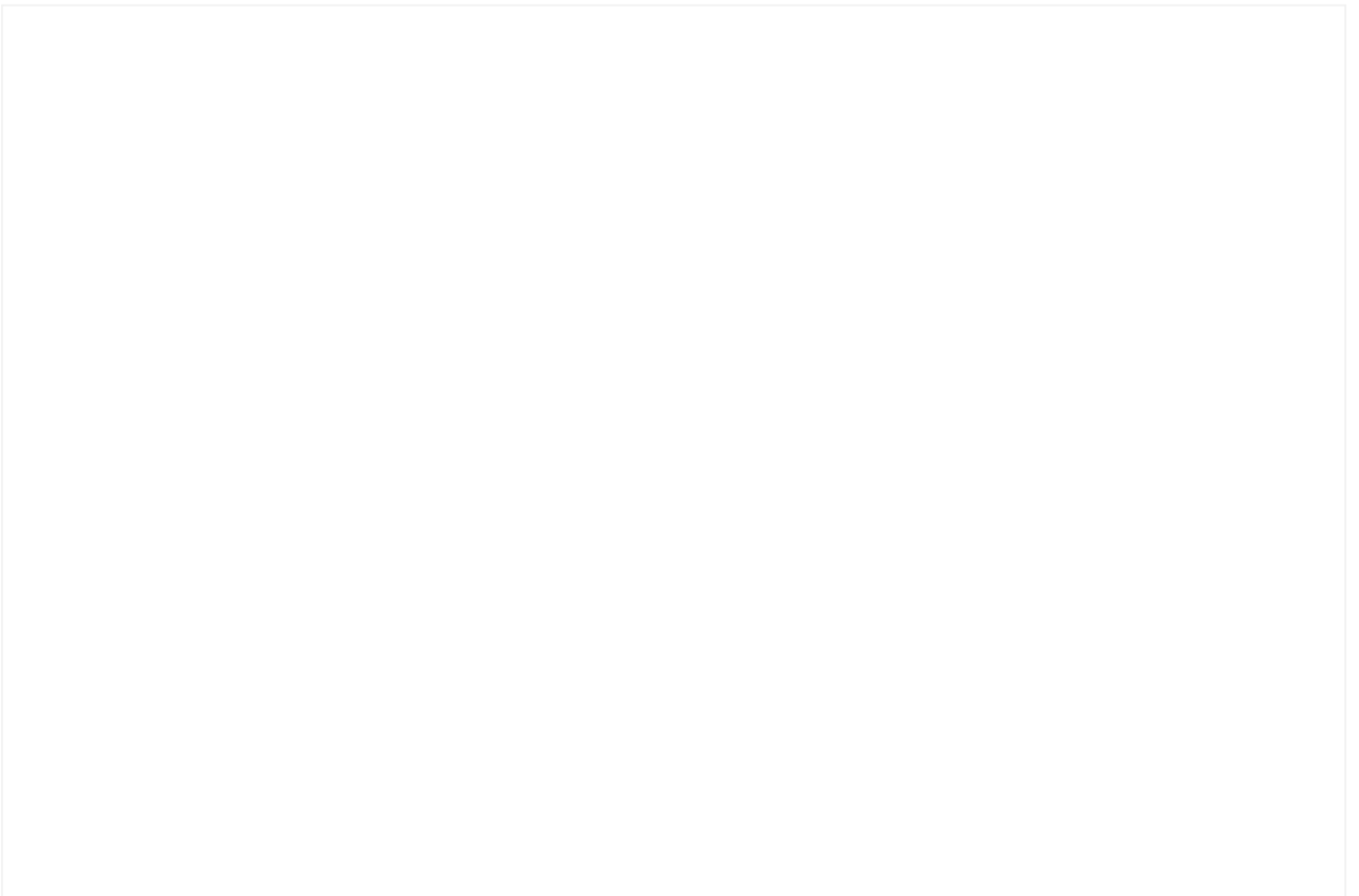
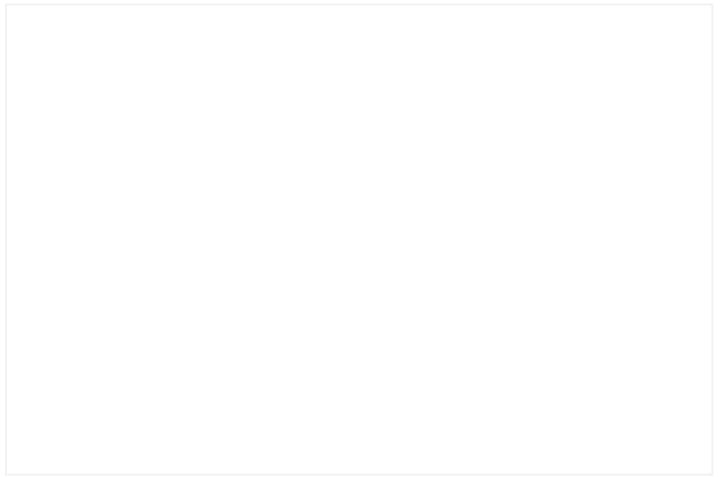
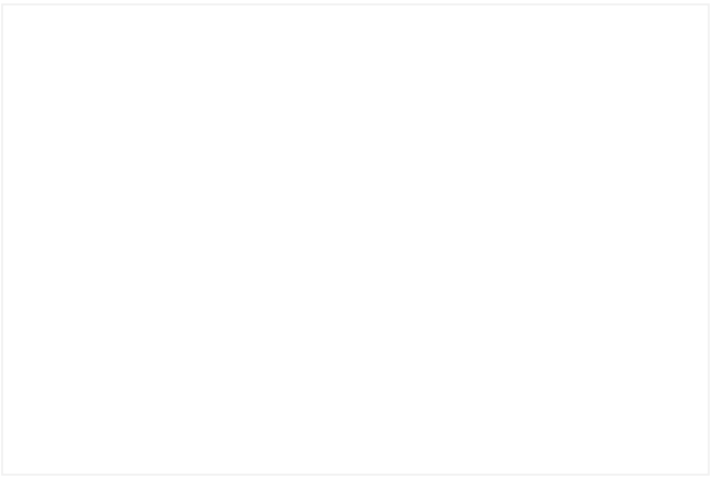
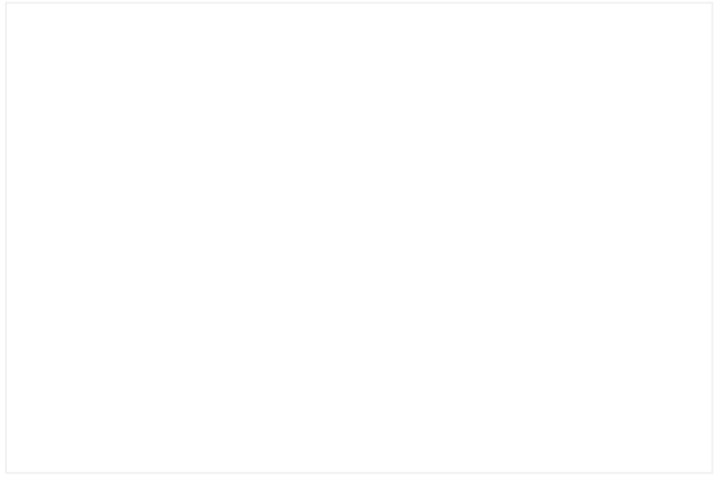
Three bedroom mid terrace town house located in a popular area of Tilehurst with good transport links. The property comprises reception room giving access to the private rear garden, separate kitchen and a cloakroom on the ground floor. A three piece family bathroom, two double bedrooms with one benefitting from an en suite shower room are located on the first floor. The master bedroom with an en suite shower room and dressing room occupy the top floor. Residents parking available. Available 3rd March 2025. Furnished or unfurnished.

AT A GLANCE

- Three bedroom townhouse
- Located close to Reading town centre
- Three bathrooms
- Council tax band D
- Residents parking
- Available 3rd March
- Unfurnished









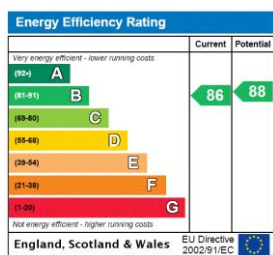
This floorplan is for illustration purposes only and is not to scale. The position and size of doors, windows, appliances and other features are approximate.

Deposit: £2,423.08

Holding Deposit: £484.61

Council Tax Band: D

Where no figures are shown, we have been unable to ascertain the information. All figures that are shown were correct at the time of printing.



Reading | 0118 4022 300 | reading@winkworth.co.uk



for every step...

winkworth.co.uk

Winkworth wishes to inform prospective buyers and tenants that these particulars are a guide and act as information only. All our details are given in good faith and believed to be correct at the time of printing but they don't form part of an offer or contract. No Winkworth employee has authority to make or give any representation or warranty in relation to this property. All fixtures and fittings, whether fitted or not are deemed removable by the vendor unless stated otherwise and room sizes are measured between internal wall surfaces, including furnishings.