



NUNHEAD LANE, LONDON, SE15
OIEO £375,000 LEASEHOLD

**A SMART, STYLISH AND NEWLY RENOVATED
ONE DOUBLE BEDROOM FLAT, SITUATED IN
A POPULAR LOCATION IN SE15.**

Dulwich | 020 8299 2722 | dulwich@winkworth.co.uk

Tenure Leasehold | Council Tax Band A – London Borough of Southwark

Winkworth

winkworth.co.uk

See things differently



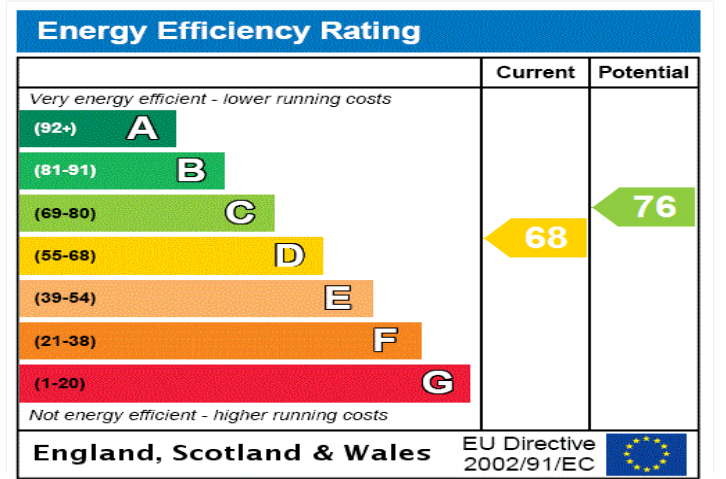
DESCRIPTION:

A smart, stylish and newly renovated one double bedroom flat, situated in a popular location in SE15. This newly renovated, bright and airy one double bedroom flat is offered to the market chain free. Having recently gone through a top to bottom refurbishment, the property is ideal for a first time buyer, pied-à-terre or BTL investor. The property boasts a living room, double bedroom, bathroom and steps that lead down to a fully fitted kitchen with direct access to a private garden. The location offers easy access to either Nunhead Green, Rye Lane, Bellenden Road or Lordship Lane, all boasting a host of independent shops, bars and restaurants. The property is also within a short walk to Peckham Rye park, arguably one of the most underrated parks in South London. Transport links are provided via Nunhead for direct links to Victoria, Peckham Rye for the overground or East Dulwich for direct links to London Bridge. This is a fantastic flat with early viewings highly advised.

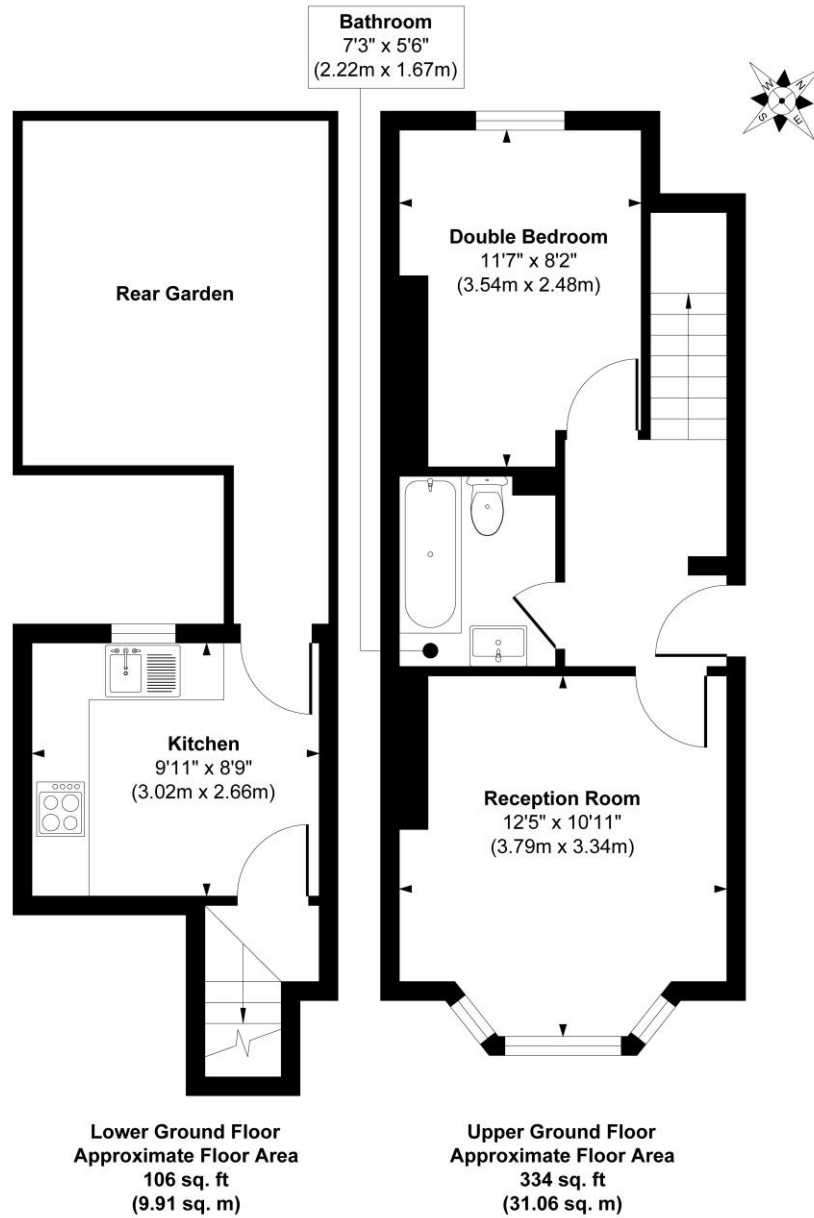
AT A GLANCE

- **Newly renovated** one-bedroom flat, offered **chain free**.
- Bright and stylish living space with **private garden access**.
- ideal for **first-time buyers, pied-à-terre, or BTL investors**.
- Prime SE15 location near **Nunhead Green, Rye Lane, and Lordship Lane**.
- Excellent **transport links** via Nunhead, Peckham Rye, and East Dulwich.





Nunhead Lane



Approx. Gross Internal Floor Area 440 sq. ft / 40.97 sq. m

Illustration for identification purposes only, measurements are approximate, not to scale.

Produced by Elements Property

This floorplan is for illustration purposes only and is not to scale. The position and size of doors, windows, appliances and other features are approximate.

Dulwich | 020 8299 2722 | dulwich@winkworth.co.uk

Winkworth

winkworth.co.uk

See things differently

Winkworth wishes to inform prospective buyers and tenants that these particulars are a guide and act as information only. All our details are given in good faith and believed to be correct at the time of printing but they don't form part of an offer or contract. No Winkworth employee has authority to make or give any representation or warranty in relation to this property. All fixtures and fittings, whether fitted or not are deemed removable by the vendor unless stated otherwise and room sizes are measured between internal wall surfaces, including fumishings.