



GOLDEN LANE ESTATE, EC1Y
£335,000 LEASEHOLD APPROX. 173 YEARS REMAINING

DESCRIPTION:

This spacious and well-presented second floor studio apartment in the Grade II Listed Cullum Welch House. In need of modernization the property has large South facing windows giving plenty of natural light. All of the Barbican Arts Centre facilities are also in easy walking distance. There are fantastic transport links, with Underground stations at nearby Barbican, Old Street and Farringdon.

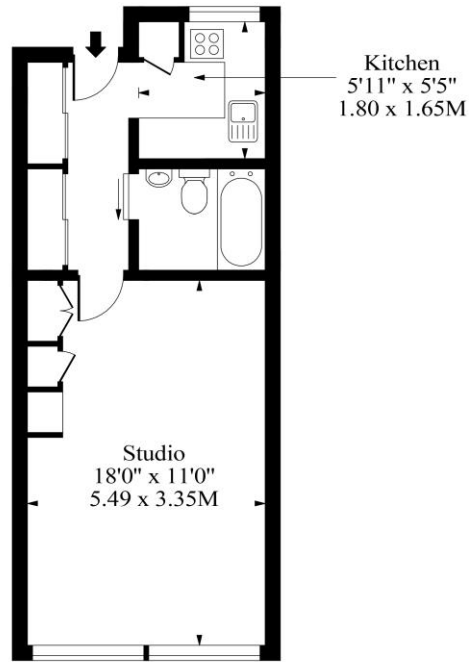
Clerkenwell & City | 020 7405 1288 | clerkenwell@winkworth.co.uk

Winkworth

for every step...

winkworth.co.uk

26 Cullum Welch House, Golden Lane Estate, EC1Y



Second Floor

Approx Gross Internal Area 350 Sq Ft - 32.51 Sq M

Measured in accordance with RICS guidelines. Every attempt is made to ensure accuracy
However all measurements are approximate.
The floor plan is illustrative purposes only and is not to scale

This floorplan is for illustration purposes only and is not to scale. The position and size of doors, windows, appliances and other features are approximate.

Tenure: Leasehold

Term: 173 year and 1 months

Service Charge: £1,019 2023-2024

Ground Rent: Peppercorn

Council Tax Band: B

Where no figures are shown, we have been unable to ascertain the information. All figures that are shown were correct at the time of printing.

Clerkenwell & City | 020 7405 1288 | clerkenwell@winkworth.co.uk

Winkworth

for every step...

winkworth.co.uk

Winkworth wishes to inform prospective buyers and tenants that these particulars are a guide and act as information only. All our details are given in good faith and believed to be correct at the time of printing but they don't form part of an offer or contract. No Winkworth employee has authority to make or give any representation or warranty in relation to this property. All fixtures and fittings, whether fitted or not are deemed removable by the vendor unless stated otherwise and room sizes are measured between internal wall surfaces, including furnishings.