



Plot 2 Waterside Frog Lane Mapledurwell Hampshire RG25 2LP



Plot 2 Waterside Frog Lane

Mapledurwell Hampshire RG25 2LP

Accommodation

Entrance hall
Cloakroom
Sitting room
Family room
Kitchen/dining room
Utility room
Dressing room and en-suite to bed one
Four further bedrooms (all with en-suites)
Double garage
Corner plot

Description

This brand new home by well respected local developers, Champion Homes, is one of just two high specification properties with a waterside setting in the sought after Hampshire village of Mapledurwell.

It has an idyllic position overlooking open farmland and benefits from a stylish contemporary interior enhanced by Champion's reputation for attention to detail and quality of finish.

The house has an oak framed porch with the front door leading through into the central hallway.

The kitchen/dining room to the rear has bi-folding doors on three sides drawing in plenty of natural light and offering a panoramic view of the stream and countryside beyond. The shaker style kitchen units are supplied by Kutschenhaus and are complemented by natural stone worksurfaces with integrated appliances including a vented induction hob (inset into a central island), oven and grill, dishwasher, fridge/freezer, Quooker hot tap and wine cabinet. The utility room has been fitted to match the kitchen and includes a washing machine and tumble dryer.

The twin aspect sitting room has a brick built fireplace with a log burner and a further set of bi-fold doors lead out to the paved terrace at the rear. Completing the ground floor is a large family room to the front and the downstairs loo.

The stairs and landing have an attractive glazed balustrade and give access to five good sized bedrooms.

The principal bedroom has French doors with Juliet balconies taking full advantage of the outlook to the rear. It also has a large dressing room and en-suite bathroom with high vaulted ceilings adding to the sense of space.

There are en-suites to the other four bedrooms, with bedroom two also having a high vaulted ceiling.

Externally, there is a double width garage to the side with plenty of driveway parking and an electric charging point.

The house sits on a corner plot that extends around the stream to the rear and has an extensive paved terrace for outside dining and entertaining.

The property has all main services apart from sewage, which is to an on-site septic tank system.



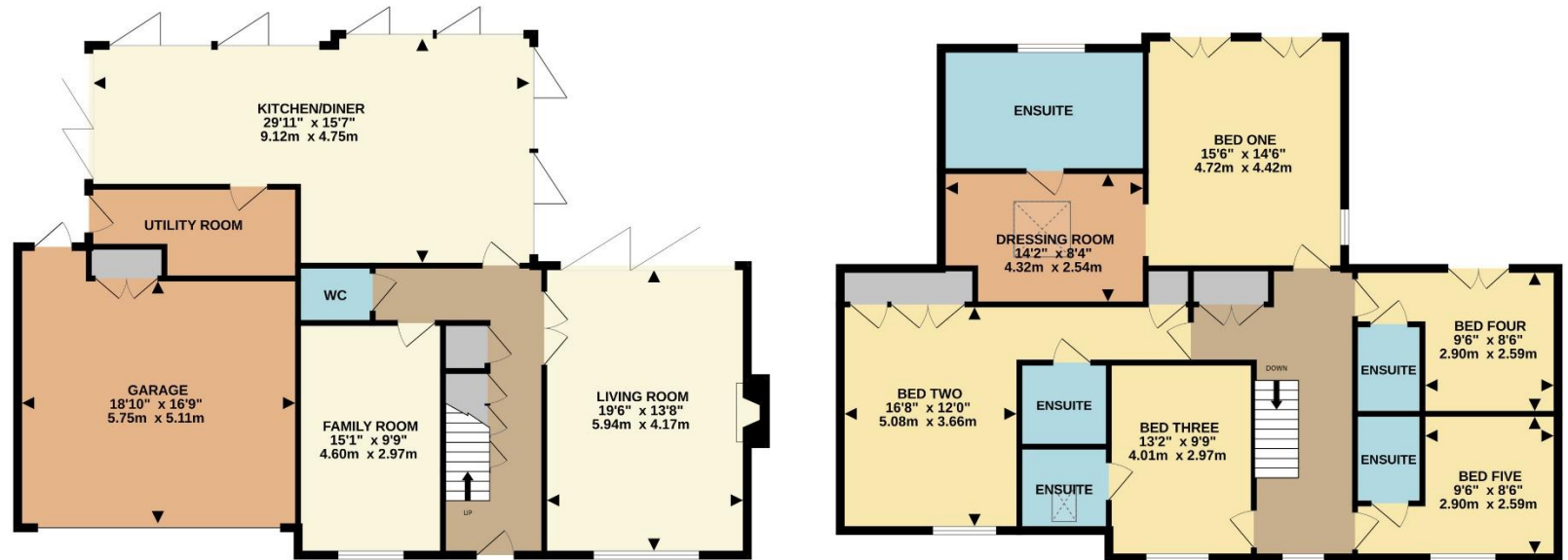
Plot 2 Waterside

Frog Lane Mapledurwell Hampshire RG25 2LP

GROUND FLOOR

1ST FLOOR

Energy Efficiency Rating		Current	Potential
Very energy efficient - lower running costs			
(92-100)	A	87	92
(81-91)	B		
(69-80)	C		
(55-68)	D		
(39-54)	E		
(21-38)	F		
(1-20)	G		
Not energy efficient - higher running costs			
England, Scotland & Wales		EU Directive 2002/91/EC	



TOTAL FLOOR AREA : 2920sq.ft. (271.3 sq.m.) approx.

Whilst every attempt has been made to ensure the accuracy of the floorplan contained here, measurements of doors, windows, rooms and any other items are approximate and no responsibility is taken for any error, omission or mis-statement. This plan is for illustrative purposes only and should be used as such by any prospective purchaser. The services, systems and appliances shown have not been tested and no guarantee as to their operability or efficiency can be given.
Made with Metropix ©2025

Basingstoke Office

10B Church Street, Basingstoke, Hampshire, RG21 7QE
01256 811730 | basingstoke@winkworth.co.uk

winkworth.co.uk/Basingstoke



See things differently.