



SUTHERLAND PLACE, W2

£595,000 SHARE OF FREEHOLD (84 YEARS REMAINING)

A VERY CHARMING ONE-BEDROOM FLAT ON THE RAISED GROUND FLOOR ON THE QUIET TREE LINED STREET, IN THE HEART OF THE ARTESIAN VILLAGE.

1 Bedroom, 1 Reception Room, 1 Bathroom, Flat/Apartment, Ground Floor, Period, 413 Approx Sq Ft, Service Charge £1,600 – £2,000 p/a, Ground Rent N/A

Winkworth

Notting Hill Sales | 0207 727 3227 | nottinghill@winkworth.co.uk

winkworth.co.uk

for every step...



DESCRIPTION:

This charming, raised ground floor flat is presented in exceptional condition and extends to 413sq.ft. The accommodation comprises; open plan reception, kitchen and dining room, bedroom to the rear and an en-suite shower room. Being on the raised ground floor the flat benefits from high ceilings and large grand window to the front and rear, which flood the rooms with natural light.

LOCATION:

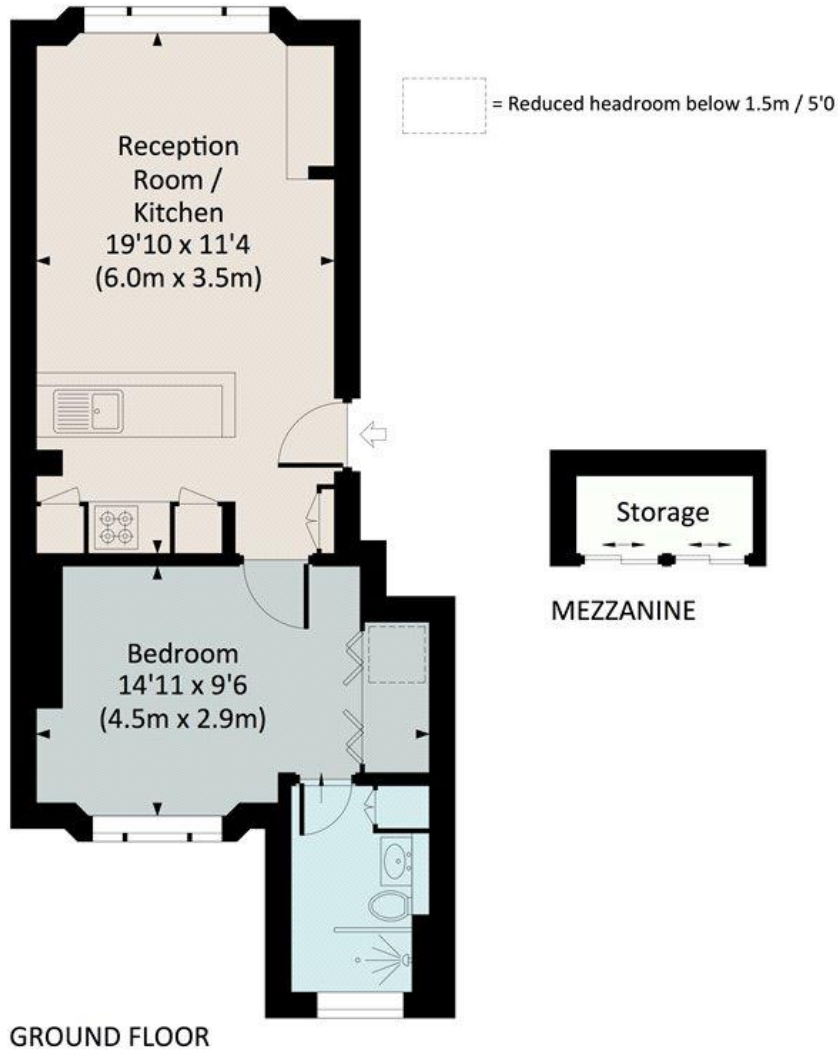
Sutherland Place is a peaceful, tree lined street in the ever-popular Artesian Road group of streets, well placed just to the east of Ledbury Road and the north of Westbourne Grove, moments from many of Notting Hill's most fashionable boutiques and restaurants.


LOCAL AUTHORITY AND COUNCIL TAX BAND:

City of Westminster (Band C)

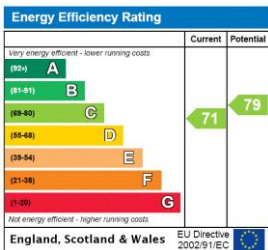


SUTHERLAND PLACE, W2
 Approximate Gross Internal Area
 38.4 sq m / 413 sq ft
 38.9 sq m / 418 sq ft Inc. Reduced Headroom



 All measurements have been made in accordance with RICS code of Measuring Practice which are approximate only and only for illustrative purposes. For the avoidance of doubt, Dowling Jones Design shall not be liable for any reliance on these measurements. © 2018 www.dowlingjones.com 020 7610 9933

This floorplan is for illustration purposes only and is not to scale. The position and size of doors, windows, appliances and other features are approximate.



Notting Hill Sales | 0207 727 3227 | nottinghill@winkworth.co.uk



winkworth.co.uk

for every step...

winkworth wishes to inform prospective buyers and tenants that these particulars are a guide and act as information only. All our details are given in good faith and believed to be correct at the time of printing but they don't form part of an offer or contract. No Winkworth employee has authority to make or give any representation or warranty in relation to this property. All fixtures and fittings, whether fitted or not are deemed removable by the vendor unless stated otherwise and room sizes are measured between internal wall surfaces, including furnishings.