



Leeson Drive

Ferndown BH22 9RD

OFFERS IN EXCESS OF £400,000

Winkworth



**OFFERS IN EXCESS OF £400,000
FREEHOLD**

A fantastic opportunity to purchase this immaculate two double bedroom detached bungalow positioned in a quiet residential area benefiting from no onward chain, a secluded south facing garden and a detached garage with light and power.

This property is perfect for those looking for a spacious property to downsize to that is quite simply ready to move into!

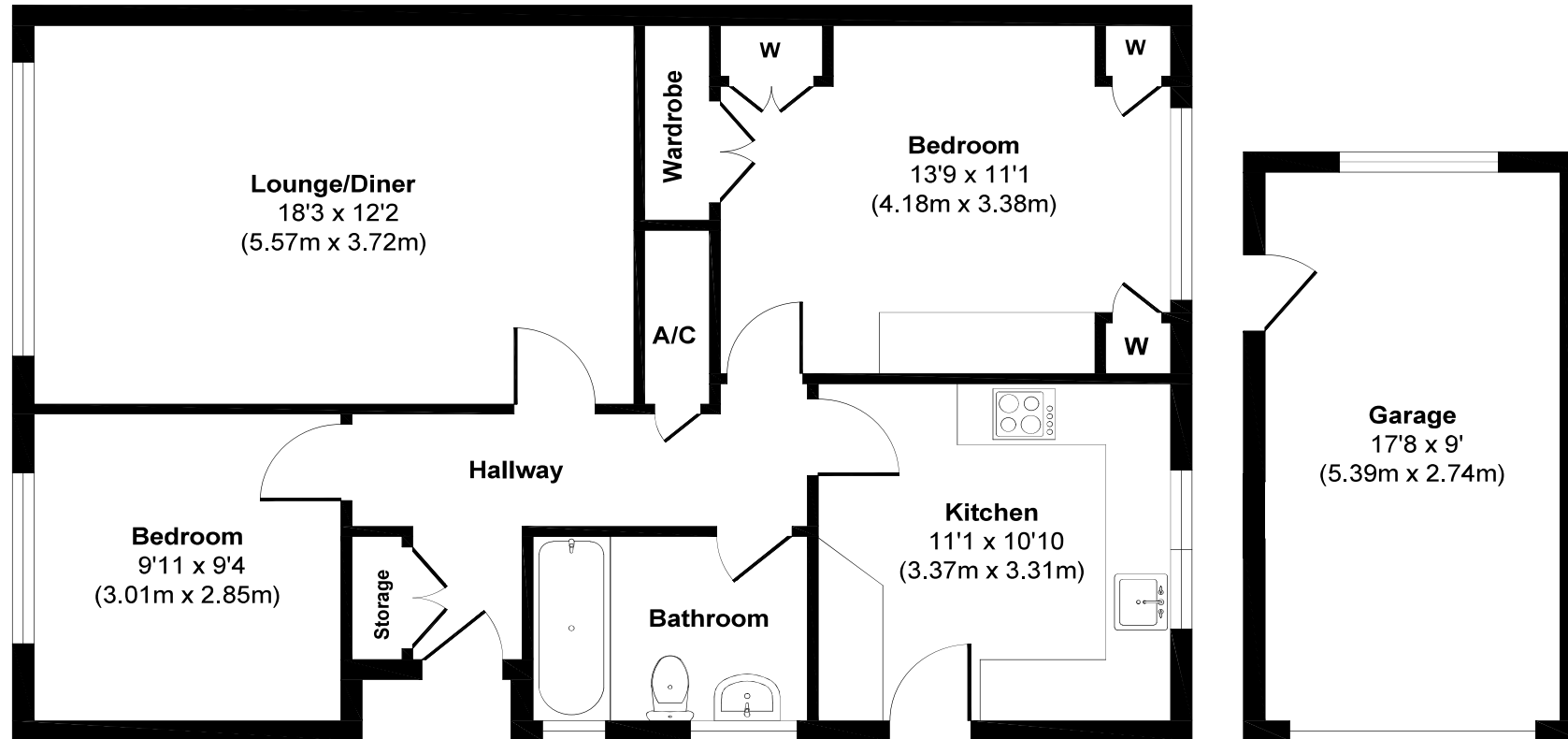
**Detached Bungalow
Fully Serviced Combi Boiler
Detached Garage With Power
Driveway
Excellent Storage
Immaculate Throughout
Secluded South Facing Garden
Sought After Residential Location
Two Double Bedrooms
No Onward Chain
EPC TBC | Council Tax Band E**

01202 434365

ferndown@winkworth.co.uk



Leeson Drive



Floor Plan Approximate
Floor Area 764 sq. ft
(70.98 sq. m)

Garage
(Not in exact position)
Approximate Floor Area
158 sq. ft
(14.76 sq. m)

Approx. Gross Internal Floor Area 922 sq. ft / 85.74 sq. m (including garage)
Illustration for identification purposes only, measurements approximate and not to scale.



LOCATION

Positioned in this sought after, quiet residential location just a short distance from Ferndown town centre which has range of amenities, including an M&S Food Hall. There are bus routes nearby giving you easy access to Bournemouth & Poole, both of which have an excellent range of shops, bars, restaurants and leisure facilities, as well as award winning sandy beaches. The nearby A31 provides quick access to the New Forest, Southampton and beyond for the commuter by car.

Winkworth Ferndown

406 Ringwood Road, Ferndown, Dorset, BH22 9AU

01202 434365 | ferndown@winkworth.co.uk

winkworth.co.uk/ferndown

Winkworth