



WINDERMERE AVENUE, WEMBLEY, MIDDLESEX, HA9
£665,000 FREEHOLD

CHARMING SEMI DETACHED THREE BEDROOM HOME BRIMMING WITH POTENTIAL

Hendon | 020 8202 1031 | hendon@winkworth.co.uk

Winkworth

for every step...

winkworth.co.uk



Discover this delightful three-bedroom semi-detached house, offering an exciting opportunity to create your dream family home. In need of some modernisation, the property provides boasts a fantastic level of scope for extension (STPP). The ground floor features a spacious double living and dining room, complete with a charming fireplace and overlooks the serene garden, flooding the space with natural light. The functional kitchen leads directly to the patio area, ideal for al fresco dining or morning coffee. Upstairs, the property offers three well-proportioned bedrooms, a bathroom, and a separate W/C. The exterior is a standout feature, with a generously sized garden. Further benefits include a garage and a driveway for off-street parking. Situated within the catchment areas of Mount Stewart, Claremont, and St Gregory's schools, this property is perfect for families prioritising education. Excellent transport links, including South Kenton Station, ensure seamless connectivity to central London. An internal viewing is a must.



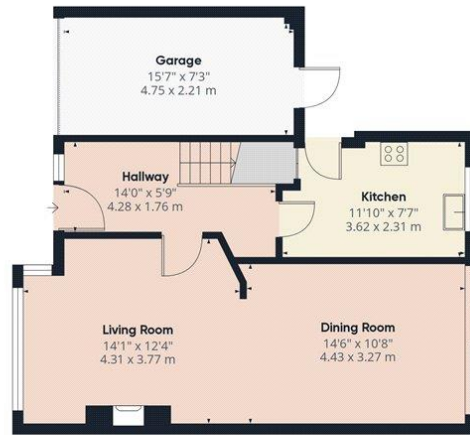
Winkworth

for every step...



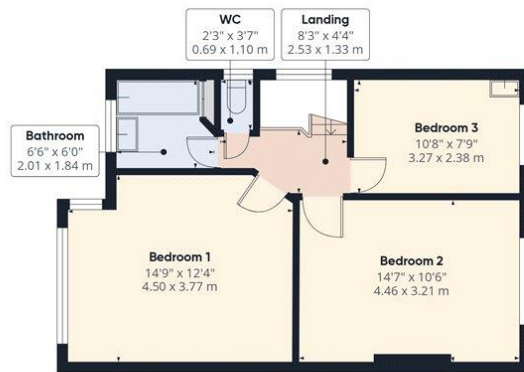
Winkworth

for every step...



Ground Floor

Approximate total area¹⁾
1119.46 ft²
104 m²



Floor 1

(1) Excluding balconies and terraces

While every attempt has been made to ensure accuracy, all measurements are approximate, not to scale. This floor plan is for illustrative purposes only. Calculations are based on RICS IPMS 3C standard.

GIRAFFE360

This floorplan is for illustration purposes only and is not to scale. The position and size of doors, windows, appliances and other features are approximate.

Tenure: Freehold

Council Tax Band: E - Brent

Where no figures are shown, we have been unable to ascertain the information. All figures that are shown were correct at the time of printing.