







A large and rarely available four-bedroom townhouse sold with no onward chain, offering bright and spacious accommodation over three floors and a huge garden.

On the ground floor you'll discover a kitchen and cloakroom towards the front. At the rear is a vast reception room, flooded with natural light and providing ample space for both living and dining. Accessed through sliding doors is the garden, with generous space to fit an outbuilding, subject to standard planning consents.

The first floor comprises three bedrooms, all with built-in wardrobes, serviced by a bathroom. A final bedroom can be found on the top floor, with further fitted wardrobes and a bathroom.

This property is ideally located just a short walk from East Putney tube station, and benefits from a private garage.





Score	Energy rating	Current	Potential
92+	A		
81-91	B		
69-80	C		72 C
55-68	D	55 D	
39-54	E		
21-38	F		
1-20	G		

### Features

- 4 Bedrooms
- Really Long Private Garden
- Private Garage
- Chain-Free

Freehold

Internal area

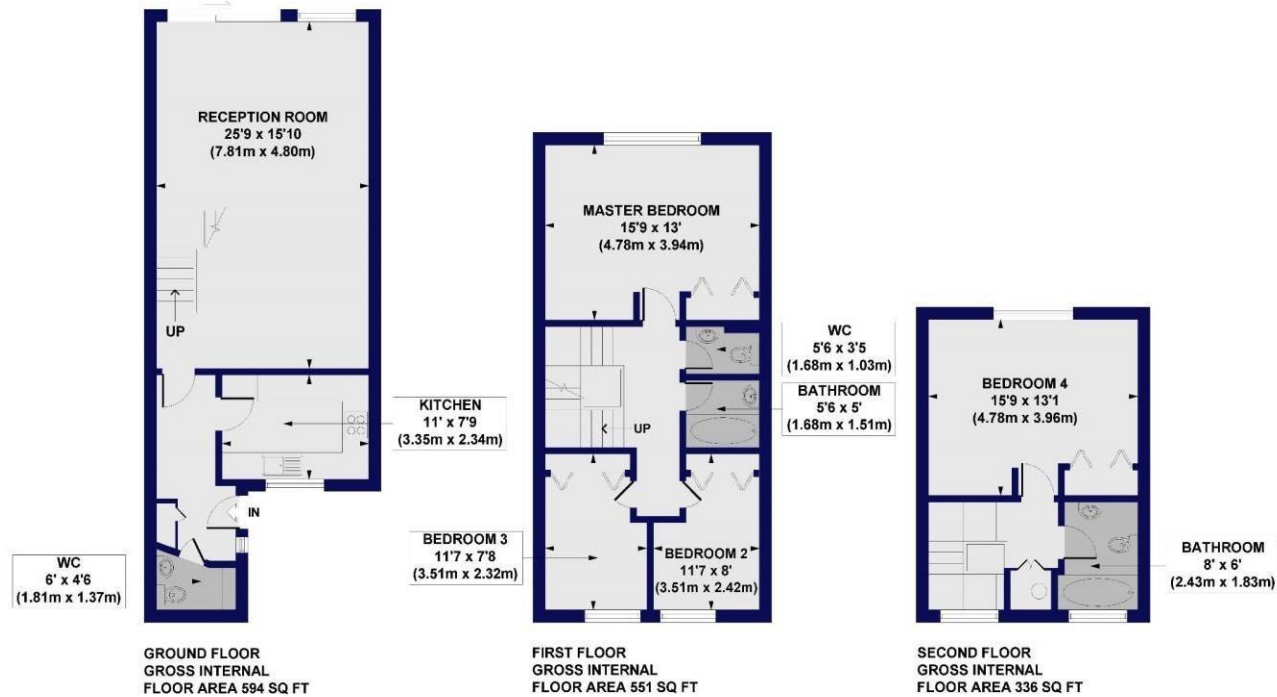
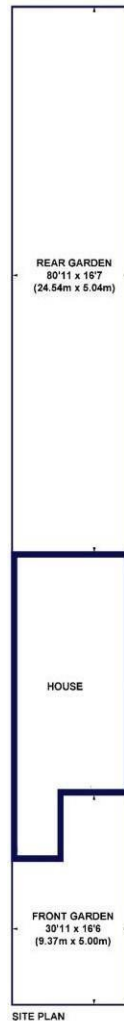
Total 1,481 sq. ft / 137.61 sq. m

Price

£925,000

## Whitefield Close, SW15

Approx. Gross Internal Floor Area 1481 sq. ft / 137.61 sq. m



All measurements of walls, doors, windows, fittings and appliances, including their size and location, are shown as standard sizes and do not constitute any warranty or representation by the seller, their agent or CP Creative. Any intending purchaser must satisfy himself by inspection or otherwise as to the correctness of the information contained in these plans. This plan is for illustrative purposes only and should be used as such by any prospective purchasers.

Winkworth