



HIGHLEVER ROAD, LONDON, W10
£3,000 PER MONTH

Winkworth



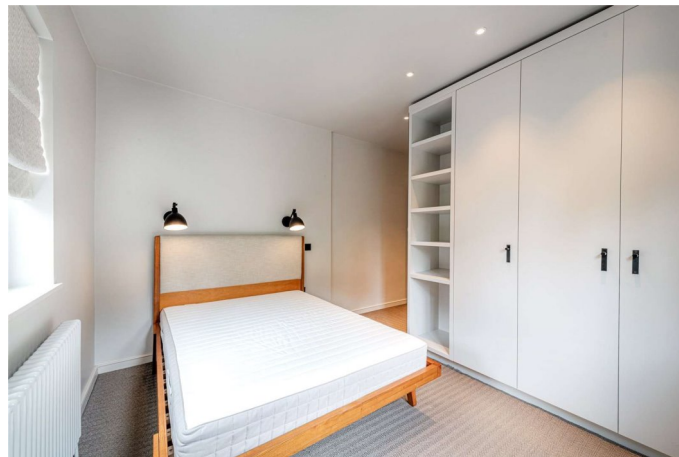
HIGHLEVER ROAD, LONDON, W10

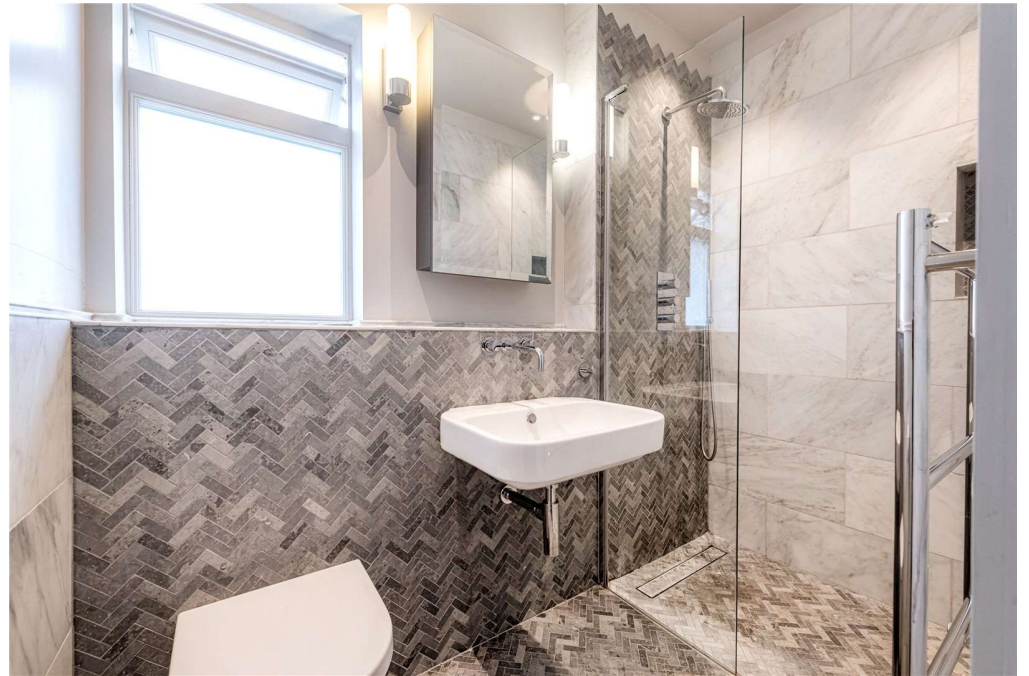
Presenting this stunning modernised, two double bedroom duplex maisonette with large private garden. Located on one of North Kensington's premier tree lined roads, this property is a short distance to Ladbrooke Grove, allowing for quick and convenient access to Central London and other parts of the city on the underground (Zone 2 Hammersmith and City Line).

Additionally, the property is moments from North Kensington's multicultural hotspot, Golborne Road and Portobello road are a prime example of a modern urban living offering plenty of unique restaurants, coffee shops and antique furniture stores.

This property has been tastefully modernised to a very high standard with no expense spared. Benefitting from its own private entrance, the property comprises a gorgeous open plan kitchen diner and reception that leads on to a substantial private landscaped garden. Upstairs, there are two spacious double bedrooms that have an abundance of natural light, well thought out storage spaces and a modern bespoke bathroom.

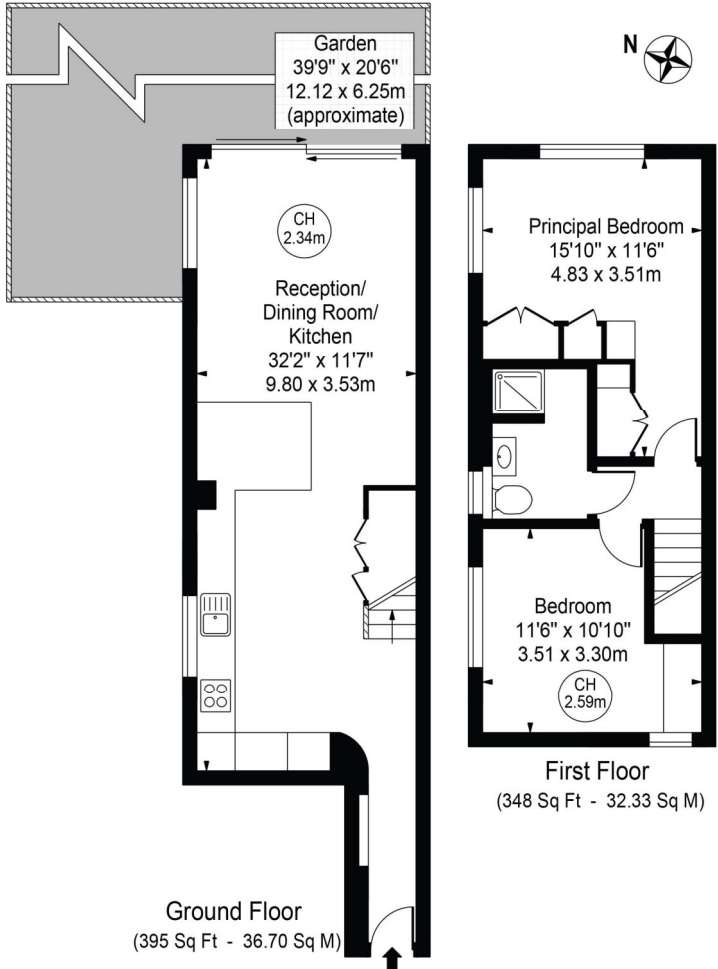
Very rarely does this unique gem come to the market.





Highlever Road

Approx. Gross Internal Area 743 Sq Ft - 69.03 Sq M



For Illustration Purposes Only - Not To Scale

This floor plan should be used as a general outline for guidance only and does not constitute in whole or in part an offer or contract. Any intending purchaser or lessee should satisfy themselves by inspection, searches, enquiries and full survey as to the correctness of each statement. Any areas, measurements or distances quoted are approximate and should not be used to value a property or be the basis of any sale or let. Copyright Morriarti Photography & Design LTD

North Kensington | 020 7792 5000 | northkensington@winkworth.co.uk



winkworth.co.uk

Winkworth wishes to inform prospective buyers and tenants that these particulars are a guide and act as information only. All our details are given in good faith and believed to be correct at the time of printing but they don't form part of an offer or contract. No Winkworth employee has authority to make or give any representation or warranty in relation to this property. All fixtures and fittings, whether fitted or not are deemed removable by the vendor unless stated otherwise and room sizes are measured between internal wall surfaces, including furnishings.