



ALDRIDGE ROAD VILLAS, W11  
**£625 PER WEEK (£2,708.33 PCM) PART FURNISHED**

**A FABULOUS ONE BEDROOM GARDEN FLAT ON A  
PRETTY TREE LINED STREET.**

Notting Hill Lettings | 0207 727 3227 | nottinghill@winkworth.co.uk

**Winkworth**

for every step...

*winkworth.co.uk*



## DESCRIPTION:

This elegant property is a very charming one double bedroom property with wooden floors throughout and period features such as bay windows and an original fireplace. The flat comprises a large double bedroom with built in storage, a very spacious reception room and a smartly refurbished fully fitted kitchen. French windows from the kitchen lead out on to an extensive private patio and garden (approx 50ft). Available part furnished and viewings are highly recommended.

## Utilities:

Electricity – Mains

Water – Mains

Sewerage – Mains

Heating – Gas

Broadband <https://checker.ofcom.org.uk/en-gb/broadband-coverage>

Mobile Coverage <https://checker.ofcom.org.uk/en-gb/mobile-coverage>

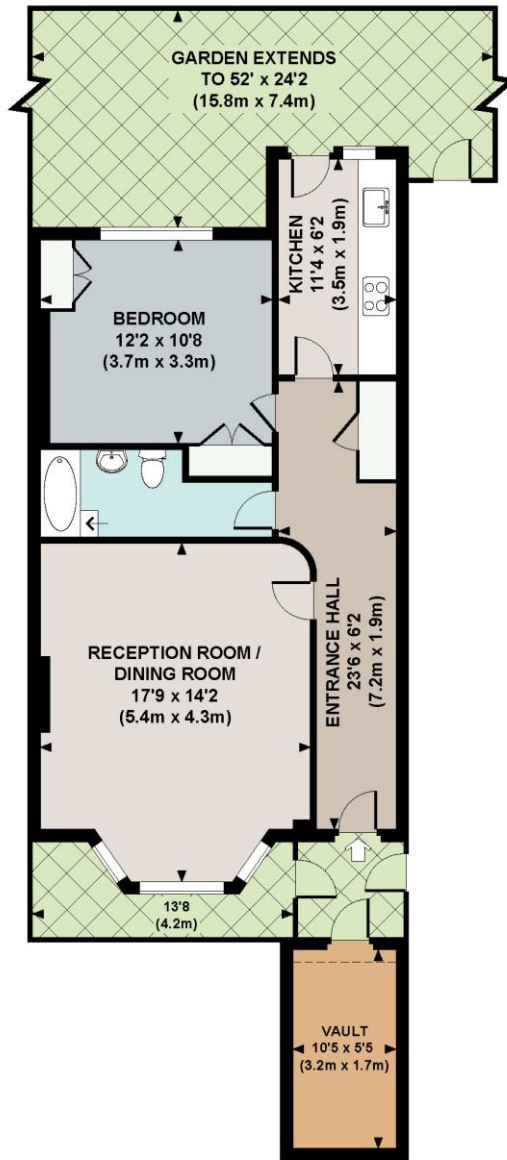
## LOCATION:

Aldridge Road Villas is a peaceful, residential street running north from Westbourne Park Road, a short walk from the many shops, restaurants and bars of Ledbury Road and Westbourne Grove. Westbourne Park underground is just moments away.



# ALDRIDGE ROAD VILLAS, W11

Approx. gross internal area  
 623 Sq.Ft. / 57.9 Sq.M. Excluding Vault  
 679 Sq.Ft. / 63.1 Sq.M. Inc. Restricted Height Area & Vault



LOWER GROUND FLOOR

All measurements are approximate and for illustration purposes only as defined by the RICS Code of Measuring Practice © 2013  
 Dowling Jones Design www.dowlingjones.com 020 7610 9933

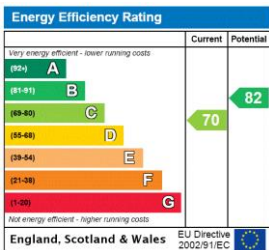
This floorplan is for illustration purposes only and is not to scale. The position and size of doors, windows, appliances and other features are approximate.

**Deposit:** £3,125

**Holding Deposit:** £625

**Council Tax Band:** D (Westminster)

Where no figures are shown, we have been unable to ascertain the information. All figures that are shown were correct at the time of printing.



Notting Hill Lettings | 0207 727 3227 | nottinghill@winkworth.co.uk



for every step...

winkworth.co.uk

Winkworth wishes to inform prospective buyers and tenants that these particulars are a guide and act as information only. All our details are given in good faith and believed to be correct at the time of printing but they don't form part of an offer or contract. No Winkworth employee has authority to make or give any representation or warranty in relation to this property. All fixtures and fittings, whether fitted or not are deemed removable by the vendor unless stated otherwise and room sizes are measured between internal wall surfaces, including furnishings.