



LONSDALE ROAD, W11

£650 PER WEEK (£2,816.66 PCM) Unfurnished/Part Furnished

A LOVELY BRIGHT AND WELL PRESENTED TWO DOUBLE BEDROOM FLAT ON THE FIRST FLOOR OF THIS PERIOD BUILDING.

Long Let, 2 Bedrooms, 1 Reception Room, 1 Bathroom, Flat/Apartment, First Floor, Unfurnished/Part Furnished

Winkworth



DESCRIPTION:

A well-proportioned and bright, two double bedroom flat on the first floor of this pretty period building. The property boasts wooden floor throughout comprises a semi open plan kitchen and reception, with two equal sized double bedrooms making it a fantastic opportunity for sharers. Available furnished or part furnished and viewings are highly recommended.

LOCATION:

Lonsdale Road is an attractive residential street, ideally located running parallel to and just behind the most fashionable stretch of Westbourne Grove with its abundance of boutiques, restaurants and bars.

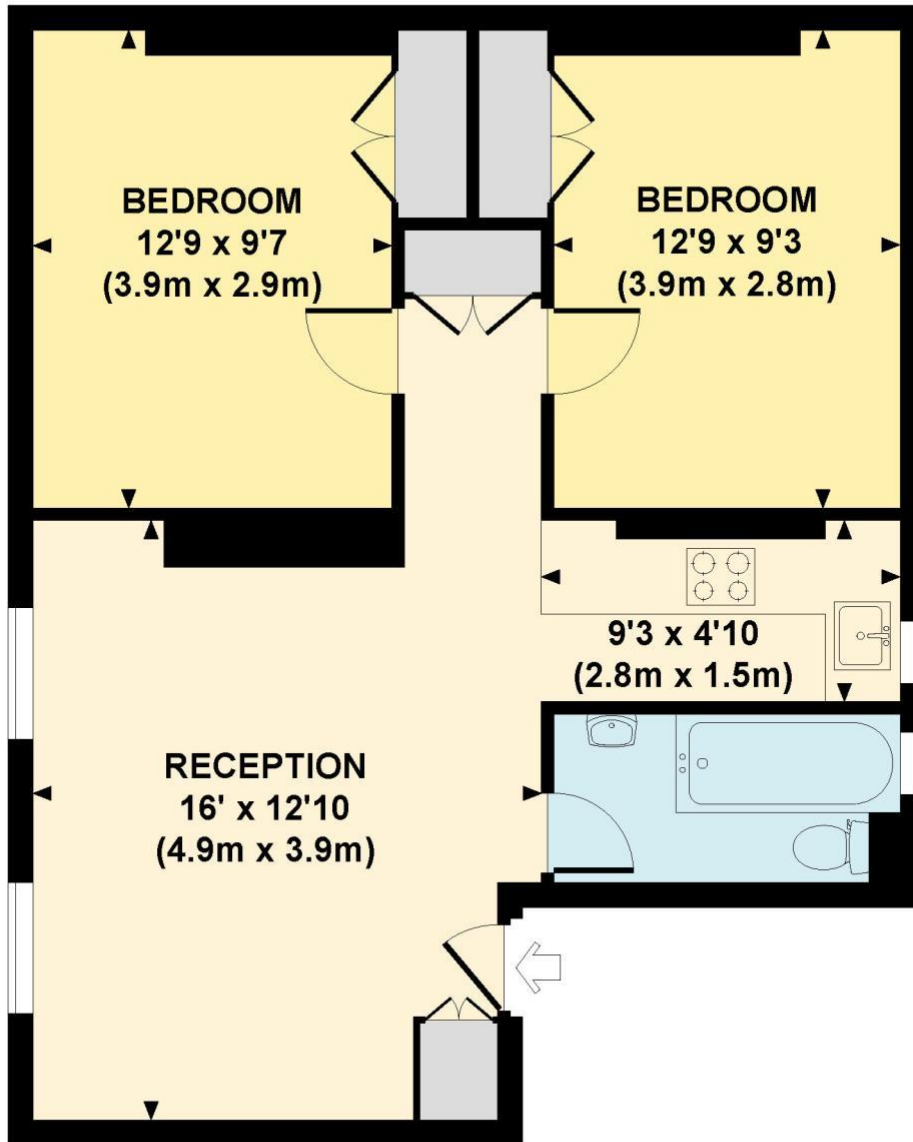
LOCAL AUTHORITY AND COUNCIL TAX BAND:

Royal Borough of Kensington and Chelsea (Band E)



LONSDALE ROAD, W11

Approx. gross internal area
606 Sq Ft. / 56 Sq M.

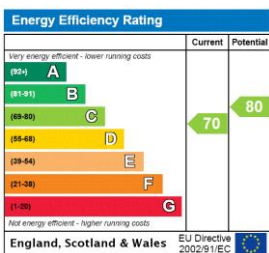


FIRST FLOOR



All measurements are approximate and for illustration purposes only as defined by the RICS Code of Measuring Practice © 2012
Dowling Jones Design www.dowlingjones.com 020 7610 9933

This floorplan is for illustration purposes only and is not to scale. The position and size of doors, windows, appliances and other features are approximate.



Notting Hill | 0207 727 3227 | nottinghill@winkworth.co.uk

Winkworth

winkworth.co.uk

for every step...

winkworth wishes to inform prospective buyers and tenants that these particulars are a guide and act as information only. All our details are given in good faith and believed to be correct at the time of printing but they don't form part of an offer or contract. No Winkworth employee has authority to make or give any representation or warranty in relation to this property. All fixtures and fittings, whether fitted or not are deemed removable by the vendor unless stated otherwise and room sizes are measured between internal wall surfaces, including furnishings.