



**CARRIAGE HOUSE, ARBORFIELD GREEN, READING, RG2 9YQ**  
**£1,300 PER MONTH FURNISHED / UNFURNISHED**

**MODERN ONE BEDROOM APARTMENT  
LOCATED AT THE POPULAR CAVALRY  
DEVELOPMENT. AVAILABLE NOW.**

Reading | 0118 4022 300 | [reading@winkworth.co.uk](mailto:reading@winkworth.co.uk)

**Winkworth**

for every step...

[winkworth.co.uk](http://winkworth.co.uk)



## DESCRIPTION:

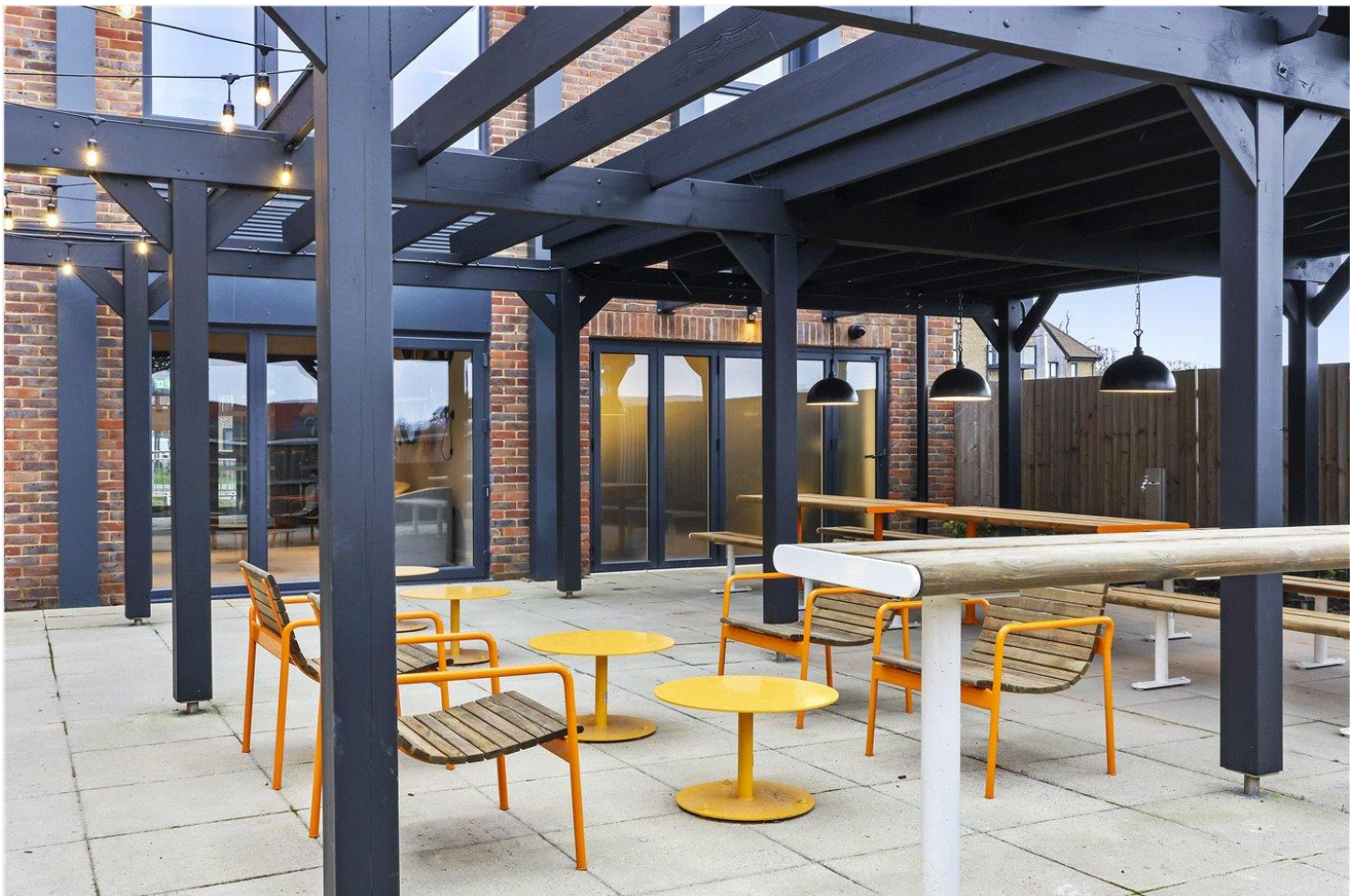
A selection of modern one and two bedroom apartments available to rent within the Carriage House building based within The Cavalry development. This one bedroom apartment comprises spacious open plan living room/kitchen, double bedroom with built in wardrobe and a three piece bathroom. The property further benefits from an allocated parking space. Available furnished or unfurnished. Available immediately.

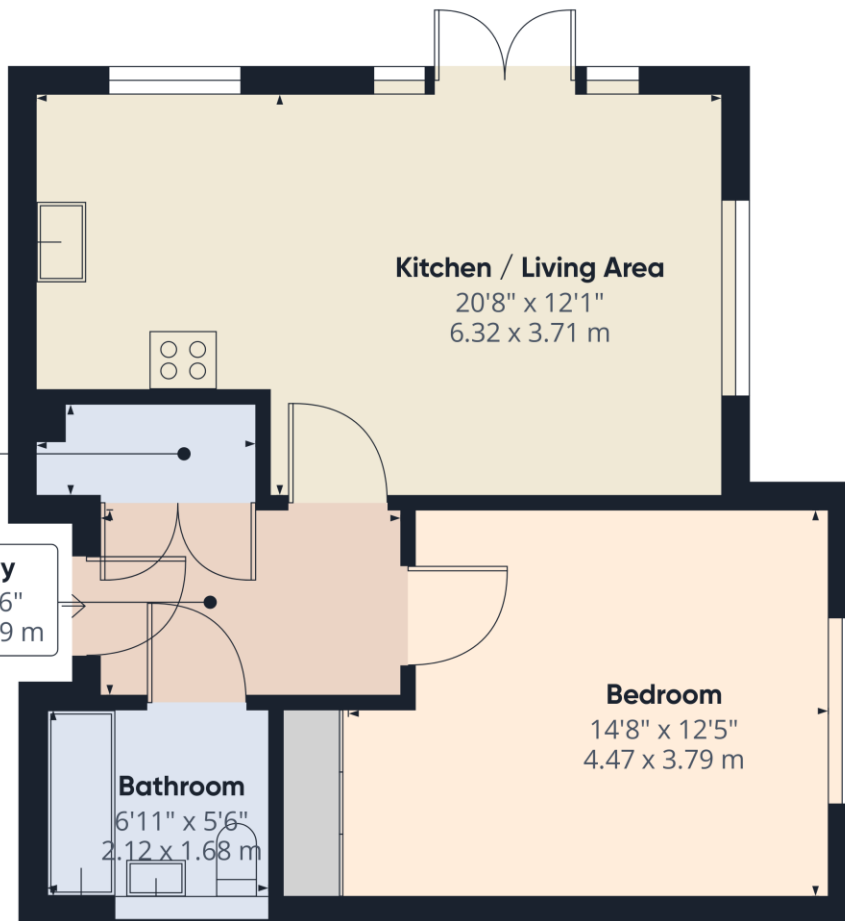
Residents will have access to the new residents Clubhouse providing a gym, workspaces, meeting room, private dining and residents lounge.

## AT A GLANCE

- One bedroom apartment
- Lift access
- Integrated Bosch appliances
- Communal gardens & dedicated BBQ area
- Council tax band B
- Allocated parking space
- Available now
- Furnished or unfurnished
- Access to the residents clubhouse







Approximate total area<sup>(1)</sup>  
 536.94 ft<sup>2</sup>  
 49.88 m<sup>2</sup>

(1) Excluding balconies and terraces

While every attempt has been made to ensure accuracy, all measurements are approximate, not to scale. This floor plan is for illustrative purposes only.

GIRAFFE360

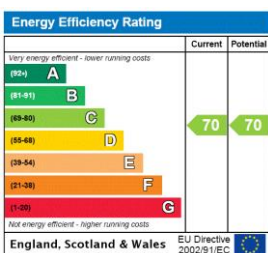
This floorplan is for illustration purposes only and is not to scale. The position and size of doors, windows, appliances and other features are approximate.

**Deposit:** £1,500.00

**Holding Deposit:** £300.00

**Council Tax Band:** B

Where no figures are shown, we have been unable to ascertain the information. All figures that are shown were correct at the time of printing.



Reading | 0118 4022 300 | reading@winkworth.co.uk

**Winkworth**

for every step...

winkworth.co.uk

Winkworth wishes to inform prospective buyers and tenants that these particulars are a guide and act as information only. All our details are given in good faith and believed to be correct at the time of printing but they don't form part of an offer or contract. No Winkworth employee has authority to make or give any representation or warranty in relation to this property. All fixtures and fittings, whether fitted or not are deemed removable by the vendor unless stated otherwise and room sizes are measured between internal wall surfaces, including furnishings.