



## MILLBANK, SW1P

£650,000

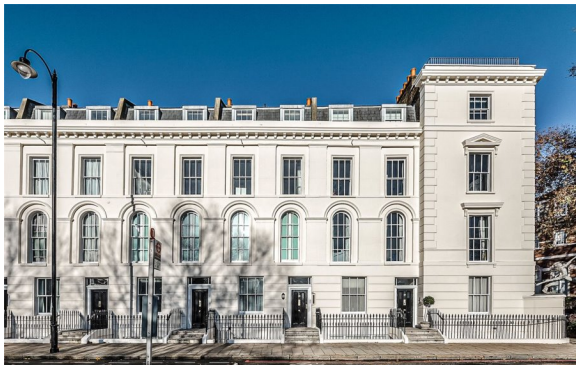
SHARE OF FREEHOLD

### At a glance...

- Large One Bedroom Flat
- Lovely River Views
- Excellent Condition
- Communal Garden
- Porter
- Council Tax Band: F

**Winkworth**

for every step...



Energy Efficiency Rating		
	Current	Potential
Very energy efficient - lower running costs		
(92+) <b>A</b>		
(81-91) <b>B</b>		
(69-80) <b>C</b>		
(55-68) <b>D</b>		
(39-54) <b>E</b>		
(21-38) <b>F</b>		
(1-20) <b>G</b>		
Not energy efficient - higher running costs		
	53	70
England, Scotland & Wales	EU Directive 2002/91/EC	

## MILLBANK, SW1P

£650,000

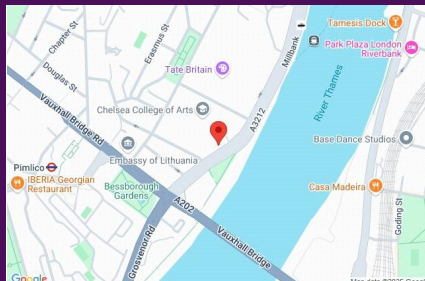
SHARE OF FREEHOLD

This fantastic one bedroom flat covers some 566 sq ft and is presented in excellent condition having been used sparingly by the current owner.

Located on the iconic Millbank the flat has incredible views over the Thames and is located in this well-run building which offers a porter and fantastic communal gardens.

The flat is on the top floor of the building meaning it's incredibly private and secure.

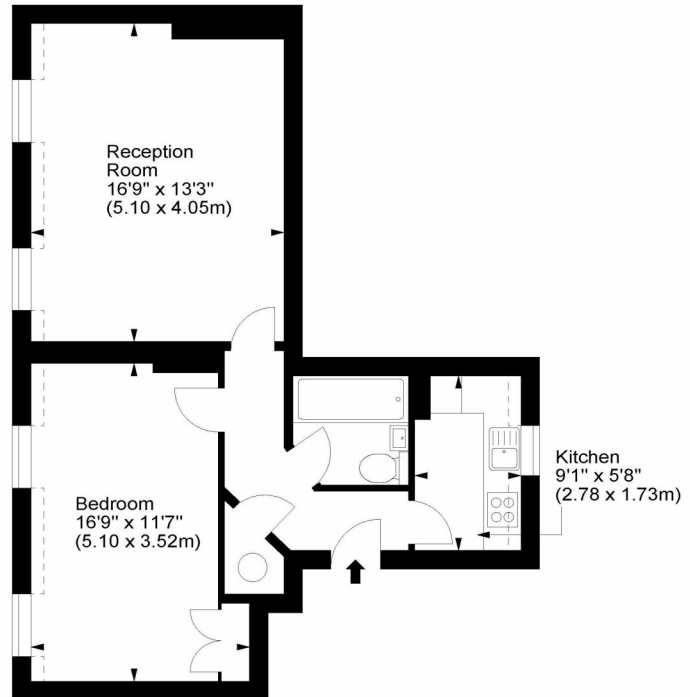
With high ceilings and lovely room proportions, particularly the large double bedroom and fabulous reception room, the flat would make a lovely home or central London base.



winkworth wishes to inform prospective buyers and tenants that these particulars are a guide and act as information only. All our details are given in good faith and believed to be correct at the time of printing but they don't form part of an offer or contract. No winkworth employee has authority to make or give any representation or warranty in relation to this property. All fixtures and fittings, whether fitted or not are deemed removable by the vendor unless stated otherwise and room sizes are measured between internal wall surfaces - including fire-chimneys.

## Millbank, SW1

Approx. Gross Internal Area  
566 Sq Ft - 52.58 Sq M



Third Floor

For illustration purposes only. Not to scale.  
All measurements are taken and shown at floor level.  
[www.r3photography.co.uk](http://www.r3photography.co.uk) © Photography / Floor Plans / Lease Plans / EPCs



Pimlico & Westminster

020 7828 1786

[pimlico@winkworth.co.uk](mailto:pimlico@winkworth.co.uk)

[winkworth.co.uk/pimlico-westminster](http://winkworth.co.uk/pimlico-westminster)

**Winkworth**

for every step...