



Flat 8, Hartshill Court

104 Golf Links Road, Ferndown BH22 8DA

Guide Price £350,000

Winkworth



GUIDE PRICE £350,000
SHARE OF FREEHOLD

Located approx 75 metres from Ferndown Championship Golf Course this extremely light and spacious three double bedroom, two bathroom, first floor apartment has been renovated by the current owners to an excellent standard throughout. Arguably one of the best apartments within Hartshill Court, further benefits include a southerly facing balcony, a share of the freehold, off road parking and a garage in nearby block. **NO ONWARD CHAIN.**

Stunning Interior
South Facing Balcony
En-suite Bedroom
Three Double Bedrooms
Guest Cloakroom
Share Of Freehold
Luxury Kitchen
Secluded Communal Gardens
Off Road Parking & Garage
Service Charge £2644pa

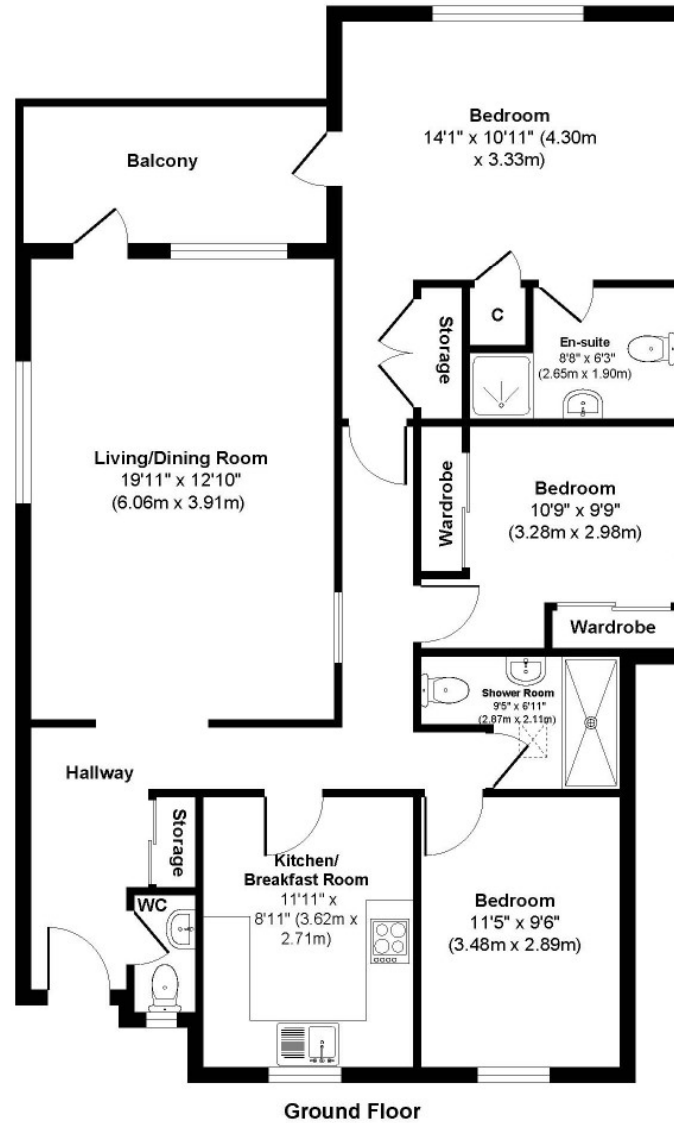
EPC D | Council Tax Band D

01202 434365
ferndown@winkworth.co.uk





Hartshill



Ground Floor

Approx. Gross Internal Floor Area 1012 sq. ft / 94.03 sq. m



LOCATION

Positioned on Golf Links Road, which is a very desirable residential location, just moments from Ferndown championship Golf Course. The town centre is within a short walk and has a range of shops, cafes and amenities including an M&S Foodhall. There are bus routes nearby giving you easy access to Bournemouth, Poole and Wimborne, all of which have an excellent range of shops, restaurants and leisure facilities. Award winning beaches are just twenty minutes away and the A31 provides quick access to the New Forest, Southampton, London and beyond.

Winkworth Ferndown

406 Ringwood Road, Ferndown, Dorset, BH22 9AU

01202 434365 | ferndown@winkworth.co.uk

winkworth.co.uk/ferndown

Winkworth