



**Flat 8, Hartshill Court**  
104 Golf Links Road, Ferndown BH22 8DA  
**Guide Price £350,000**





GUIDE PRICE £350,000  
SHARE OF FREEHOLD

Located approx 75 metres from Ferndown Championship Golf Course this extremely light and spacious three double bedroom, two bathroom, first floor apartment has been renovated by the current owners to an excellent standard throughout. Arguably one of the best apartments within Hartshill Court, further benefits include a southerly facing balcony, a share of the freehold, off road parking and a garage in nearby block. **NO ONWARD CHAIN.**

Stunning Interior  
South Facing Balcony  
En-suite Bedroom  
Three Double Bedrooms  
Guest Cloakroom  
Share Of Freehold  
Luxury Kitchen  
Secluded Communal Gardens  
Off Road Parking & Garage  
Service Charge £2644pa

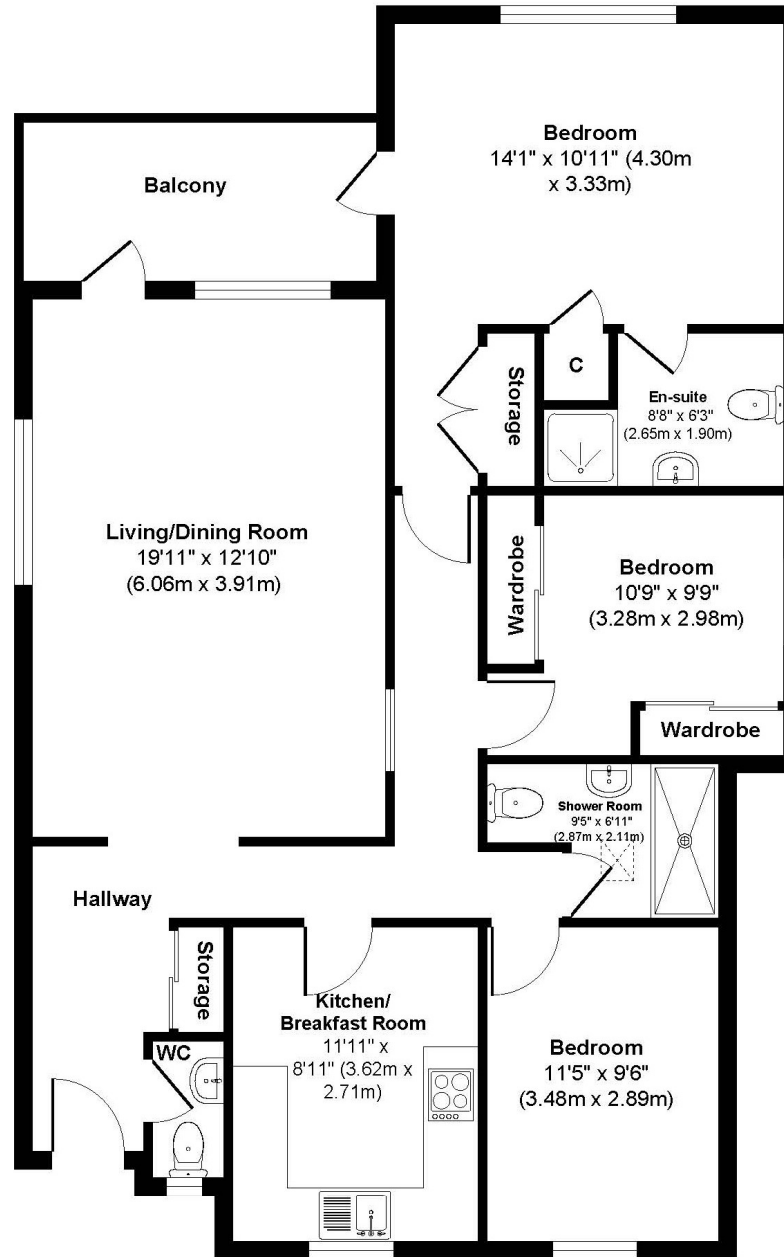
EPC D | Council Tax Band D

01202 434365  
ferndown@winkworth.co.uk





# Hartshill



Approx. Gross Internal Floor Area 1012 sq. ft / 94.03 sq. m



## LOCATION

Positioned on Golf Links Road, which is a very desirable residential location, just moments from Ferndown championship Golf Course. The town centre is within a short walk and has a range of shops, cafes and amenities including an M&S Foodhall. There are bus routes nearby giving you easy access to Bournemouth, Poole and Wimborne, all of which have an excellent range of shops, restaurants and leisure facilities. Award winning beaches are just twenty minutes away and the A31 provides quick access to the New Forest, Southampton, London and beyond.

## Winkworth Ferndown

406 Ringwood Road, Ferndown, Dorset, BH22 9AU

01202 434365 | [ferndown@winkworth.co.uk](mailto:ferndown@winkworth.co.uk)

[winkworth.co.uk/ferndown](http://winkworth.co.uk/ferndown)

**Winkworth**