



GOLDRING WAY, ST. ALBANS, HERTFORDSHIRE, AL2
£500,000 LEASEHOLD

A TWO BEDROOM TWO BATHROOM GROUND FLOOR FLAT WITH SOUTHERLY FACING TERRACE

Borehamwood | 020 8953 8899 | borehamwood@winkworth.co.uk



DESCRIPTION:

Located in the highly sought after and desirable Napsbury Park is this well presented two bedroom two bathroom ground floor purpose built apartment.

Constructed approx. 5 years ago, the property is sold with the benefit and peace of mind of BLP insurance which provides cover for the fabric of the building in the unlikely event that a structural issue occurs.

The accommodation totals in excess of 1000 square feet, the vast majority of which being southerly facing, and is complimented by its own paved terrace.

Energy performance rating of B

AT A GLANCE

- 2 Bedrooms
- Two Bathrooms
- 1004 Square Feet
- Southerly Facing Terrace
- Long Lease
- Chain Free
- Double Glazed
- Gas Central Heating





Winkworth



Winkworth



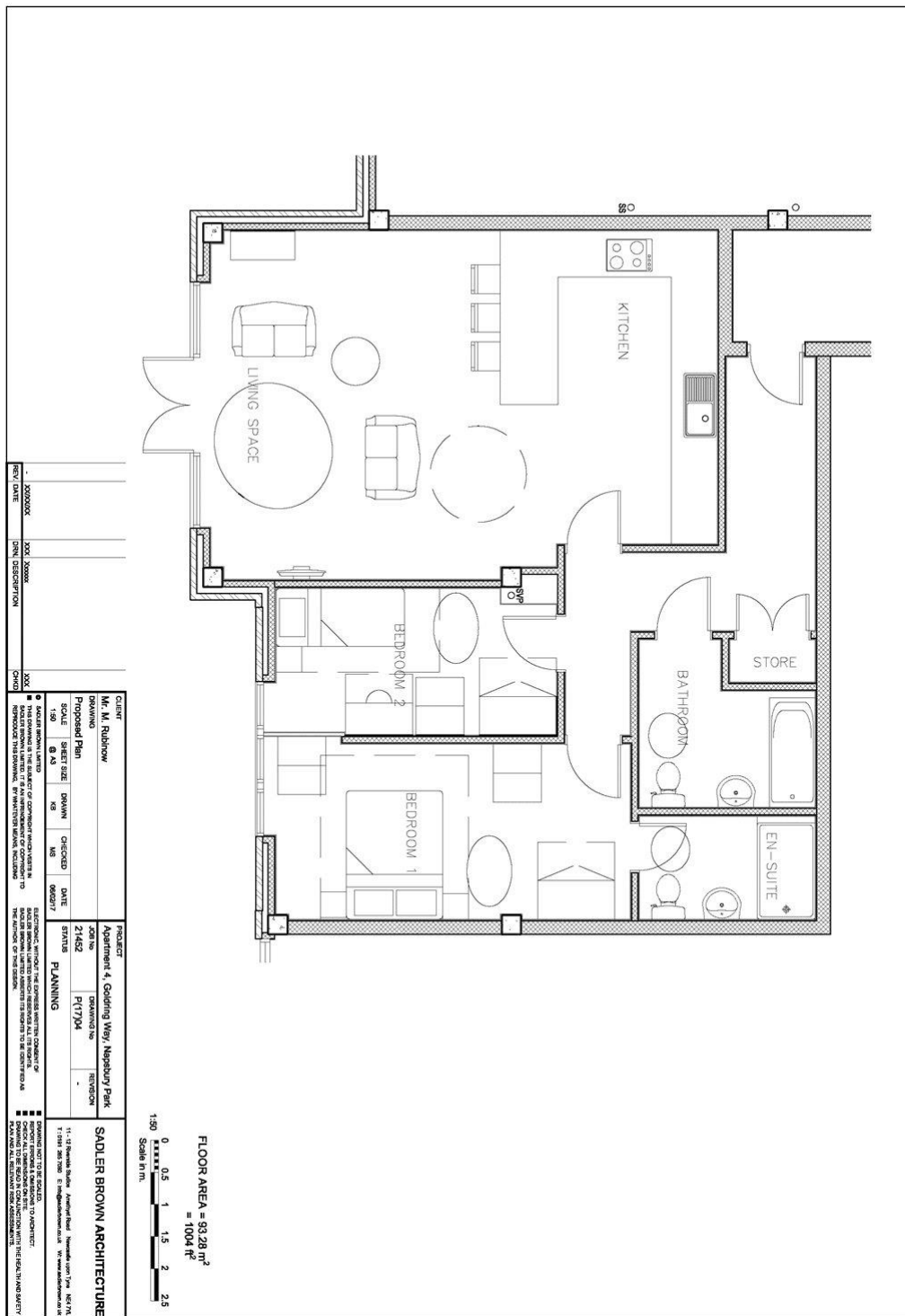
Winkworth



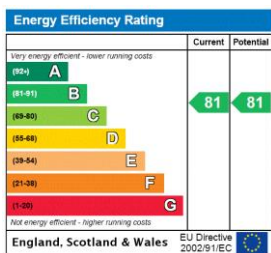
Winkworth



Winkworth



This floorplan is for illustration purposes only and is not to scale. The position and size of doors, windows, appliances and other features are approximate.



Tenure: Leasehold

Term:

Service Charge: £0 per annum

Ground Rent: £ 250 Annually (subject to increase)

Council Tax Band: E

Where no figures are shown, we have been unable to ascertain the information. All figures that are shown were correct at the time of printing.