



MONSON ROAD, LONDON, NW10
£825,000 LEASEHOLD

A SUPERB THREE BEDROOM, FULLY EXTENDED GARDEN FLAT MEASURING OVER 1060 SQ.FT IN THIS GREAT LOCATION CLOSE TO AMENITIES IN KENSAL GREEN.

Kensal Rise & Queens Park | 0208 960 4947 | kensalrise@winkworth.co.uk

Winkworth

winkworth.co.uk

See things differently



LOCATION:

Nestled in the vibrant heart of North West London, Kensal Green is a lively and eclectic neighborhood that perfectly blends urban charm with a laid-back, community-driven vibe. Known for its leafy streets, characterful Victorian and Edwardian homes, and a melting pot of residents, Kensal Green exudes a welcoming, creative energy that appeals to families, young professionals, and artists alike. At its core lies a thriving hub of independent boutiques, quirky cafés, and stylish eateries, offering everything from artisan coffee and fresh pastries to world-class dining experiences. The area's social scene is complemented by cozy pubs with roaring fireplaces, trendy wine bars, and an array of cultural hotspots like The Lexi Cinema, an intimate, community-owned venue loved for its curated selection of films and events. Nature enthusiasts will find solace in the nearby Queen's Park, perfect for weekend strolls, picnics, or letting kids run wild in the adventure playground. Kensal Green's famous cemetery, a beautiful and historic Victorian landmark, adds a serene touch to the area, offering a peaceful escape and a slice of London's rich history. With excellent transport links, including Overground and Underground connections, Kensal Green is perfectly placed for easy commutes into Central London while retaining its unique neighborhood charm. It's a place where creativity thrives, community spirit flourishes, and every street has a story to tell. Whether you're a foodie, a nature lover, or simply seeking a slice of London's cosmopolitan spirit, Kensal Green delivers it all with a dash of character and warmth.



Winkworth



DESCRIPTION:

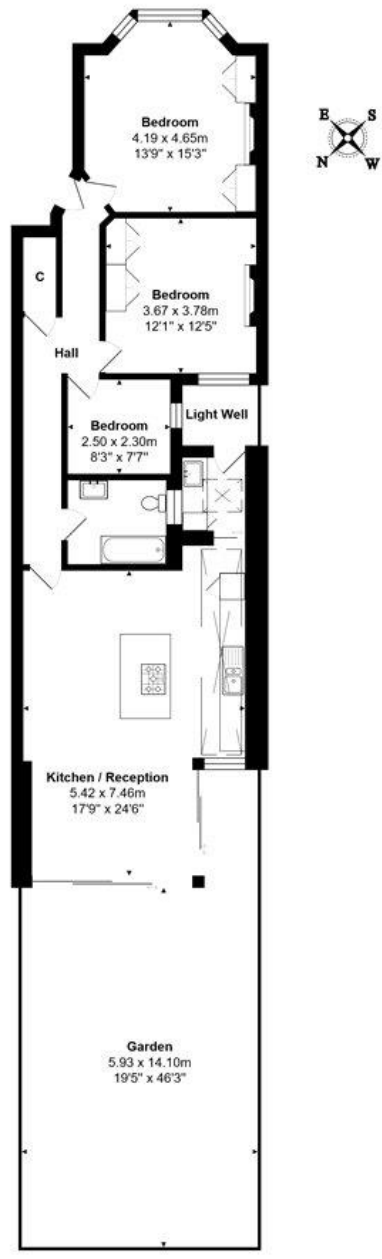
Nestled in a charming Edwardian conversion, this exquisite three-bedroom garden flat offers the perfect blend of period character and modern living. This beautifully extended home showcases spacious interiors, thoughtful design, and the luxury of sole use of a landscaped garden. The property has been meticulously refurbished to create a light-filled and versatile layout. The heart of the home is the stunning open-plan kitchen and living space, featuring sleek, contemporary finishes, integrated appliances, and generous dining and entertaining areas. Sliding doors seamlessly connect the indoors to the garden, creating the ideal setting for al fresco dining or relaxing in your private outdoor oasis. With side and rear extensions, this flat offers an impressive footprint rarely found in similar properties. Three generously sized bedrooms ensure ample space for a growing family, home office, or guest accommodation.

Period features, such as high ceilings and sash windows, blend harmoniously with contemporary upgrades, including wood flooring and bespoke storage solutions. The garden is a standout feature, offering a mix of patio and lawn areas, perfect for entertaining, gardening, or simply unwinding in privacy.

Winkworth

winkworth.co.uk

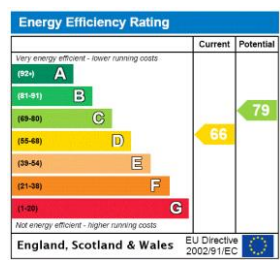
See things differently



Total Area: 98.5 m² ... 1060 ft² (excluding light well, garden)

All measurements are approximate and for display purposes only

This floorplan is for illustration purposes only and is not to scale. The position and size of doors, windows, appliances and other features are approximate.



Kensal Rise & Queens Park | 0208 960 4947 | kensalrise@winkworth.co.uk



winkworth.co.uk

See things differently

winkworth wishes to inform prospective buyers and tenants that these particulars are a guide and act as information only. All our details are given in good faith and believed to be correct at the time of printing but they don't form part of an offer or contract. No Winkworth employee has authority to make or give any representation or warranty in relation to this property. All fixtures and fittings, whether fitted or not are deemed removable by the vendor unless stated otherwise and room sizes are measured between internal wall surfaces, including furnishings.