



BERENS ROAD, LONDON, NW10
£765,000 LEASEHOLD

**A FANTASTIC SPLIT LEVEL APARTMENT IN A GREAT LOCATION
WITHIN KENSAL GREEN, CLOSE TO AMENITIES AND TRANSPORT
LINKS**

Kensal Rise & Queens Park | 0208 960 4947 | kensalrise@winkworth.co.uk

Winkworth

winkworth.co.uk

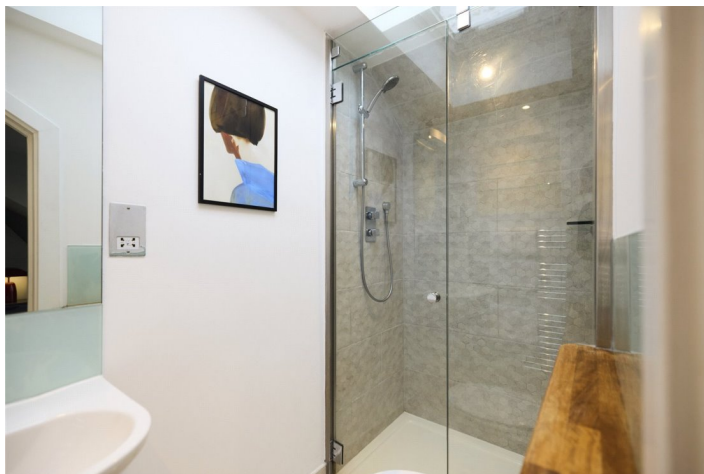
See things differently



LOCATION: Berens Road is ideally situated in the southerly part of Kensal Green near Chamberlayne Road and Harrow Road. Kensal Green Tube station is only 400m away (Bakerloo line zone 2) and there is easy access to nights out in Notting Hill via the 52 bus (10mins). If its local interest there is an array of shops, bars and restaurants on your doorstep including the Paradise by Way of Kensal Green, William IV and a huge Sainsbury's superstore off Ladbroke Grove. If its green spaces you are looking for then Queens Park itself is a short walk away. Highly Recommended.



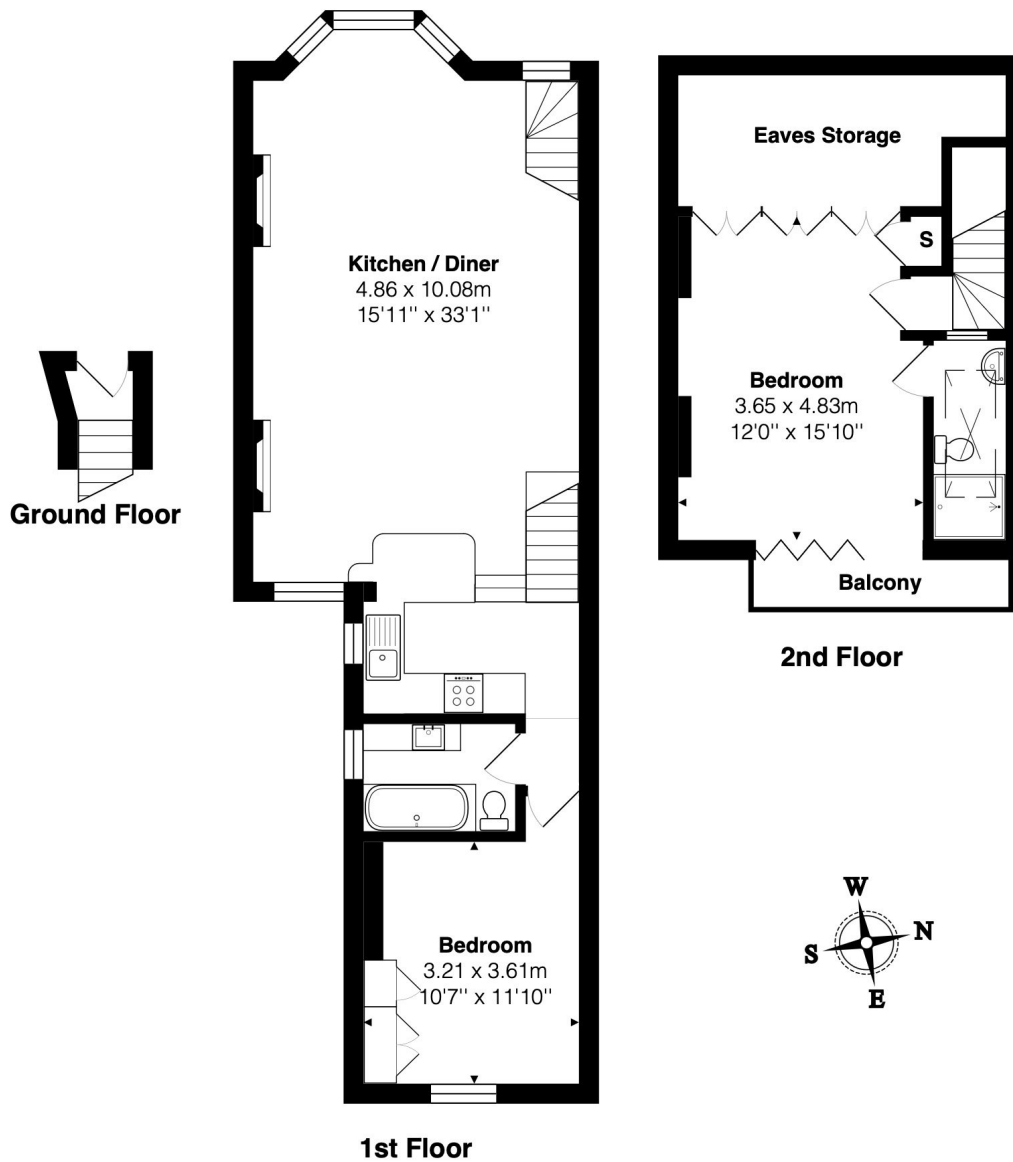
Winkworth



DESCRIPTION:

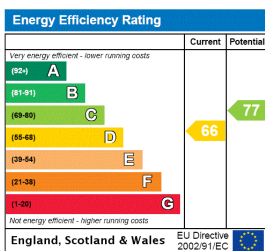
This lovely split level first and second floor apartment measures over 1040 sq.ft with two really good sized double bedrooms, (the one in the loft with en-suite shower room) a large bathroom and a stunning open plan living area that has space for dining, cooking and lounging. The property is in good condition throughout and is offered to the market with no upper chain and long lease.

Winkworth



Total Area: 97.2 m² ... 1046 ft² (excluding balcony)
All measurements are approximate and for display purposes only

This floorplan is for illustration purposes only and is not to scale. The position and size of doors, windows, appliances and other features are approximate.



Kensal Rise & Queens Park | 0208 960 4947 | kensalrise@winkworth.co.uk



winkworth.co.uk

See things differently

winkworth wishes to inform prospective buyers and tenants that these particulars are a guide and act as information only. All our details are given in good faith and believed to be correct at the time of printing but they don't form part of an offer or contract. No winkworth employee has authority to make or give any representation or warranty in relation to this property. All fixtures and fittings, whether fitted or not are deemed removable by the vendor unless stated otherwise and room sizes are measured between internal wall surfaces, including furnishings.