



WAYSIDE CLOSE, GUIDE PRICE, £1,095,000, FREEHOLD

THIS CHARMING THREE/FOUR BEDROOM DETACHED CONTEMPORARY HOME HAS RECENTLY BEEN REMODELLED AND REDECORATED TO AN IMPECCABLE STANDARD. THE PROPERTY BOASTS A STYLISH AND VERSATILE TRIPLE ASPECT KITCHEN/BREAKFAST/DINING ROOM, A WRAPAROUND PATIO BALCONY OVERLOOKING A GENEROUS SIZED REAR GARDEN WHICH OFFERS THE PERFECT VENUE FOR OUTDOOR RELAXATION, A PRINCIPAL BEDROOM WITH A NEWLY FITTED ENSUITE WHICH IS ALSO COMPLEMENTED WITH A MATCHING MODERN FAMILY BATHROOM. SITUATED IN A PEACEFUL CLOSE OFF BARNES LANE, MINUTES AWAY FROM THE SEAFRONT AND THE VILLAGE CENTRE WITH ALL ITS AMENITIES. A MUST TO VIEW!

Milford on Sea | 01590 642641 |



for every step...

winkworth.co.uk



Approach:

Covered entrance porch with outside courtesy light and a patio step providing access via a UPVC front door with obscure glazing to both sides to the: Hallway: Plastered ceiling with inset spotlights and smoke alarm, stairs to first floor landing and accommodation with under stairs storage area, a double radiator and wooden panelled wall points. Doors off to all ground floor accommodation, including a door to

Cloakroom:

Double glazed window, a matching suite comprising of low-level WC with concealed cistern and vanity wash hand basin with mono cut taps over and fitted cupboard below. A wall-mounted Glow-worm gas heating and hot water boiler, further wall mounted medicine cabinet with a mirrored front and additional storage below.

Sitting Room:

Double glazed window to the front, smooth plastered ceiling with inset spotlights, a double radiator and power points.

Study/Bedroom:

Dual aspect room with a double glazed window to the front and further double glazed bi-fold doors that give access out onto the Sun Terrace, a double radiator and power points.

Kitchen/DiningRoom:

Triple aspect room with a double glazed

window to the side, a further double glazed window to the rear with adjacent double glazed bi-fold doors and further double glazed bi-folding doors to the opposite side, both giving access out onto the raised

Sun Terrace and Patio Area:

Two double radiators, quartz work surface in part to 2 walls with a range of base and pan drawers below with further matching wall mounted units over, a central matching island with a fitted breakfast bar to one side and further matching cupboards and panels to the other with a central hob. A 1 1/2 bowl stainless steel sink inset to the quartz work surface with drainer and central mono taps with the instant hot water. A matching larder style unit incorporating an electric double oven. Another larder unit with ample shelving and storage, an integrity fitted fridge and freezer and power points. Matching dummy doors giving access from the kitchen to the:

Utility Room: Double glazed door giving access out onto the Rear Terrace and Garden. Work surface in part to one wall with base units below and further matching wall units above, a single bowl stainless steel sink in set to the work surface with mono taps over, further integrity fitted fridge and freezer with built-in storage space and power points. Further door to the:

Plant Room: Wall mounted electric meter and fuse board with adjacent wall mounted solar panel controls, also with access to the Integral Garage.

Stairs from the Entrance Hallway giving access to the:

First Floor Landing:

Ceiling with spotlights and loft hatch giving access to the roof space and storage area, two double glazed windows to the rear with adjacent double glazed windows also to the rear. A single door built-in storage cupboard, a double radiator, part panelled walls, a double radiator and power point. Doors off to all first floor accommodation, including door to:

Principal Bedroom:

Dual aspect with double glazed window to the front and further double glazed double opening doors leading out to the Juliet balcony overlooking the Rear Garden. Recessed storage area, a double radiator and power points. Door to the:

Dressing Room:

Fitted with bespoke built-in wardrobes and storage incorporating two double hanging wardrobes, one large single hanging wardrobe and additional shelving for storage.

Ensuite Shower Room:

Obscure double glazed window to the front, a matching suite comprising of low-level WC with concealed cistern, a vanity wash hand basin with fitted double drawer pack below and mono taps over. A walk in shower cubicle with both wall mounted and handheld shower, ceramic tiled flooring, a wall mounted stainless steel ladder style radiator and a part tiled wall.



Bedroom Two:

Dual aspect room with a double glazed window to the front and further double glazed windows to the side, a double radiator and a power point.

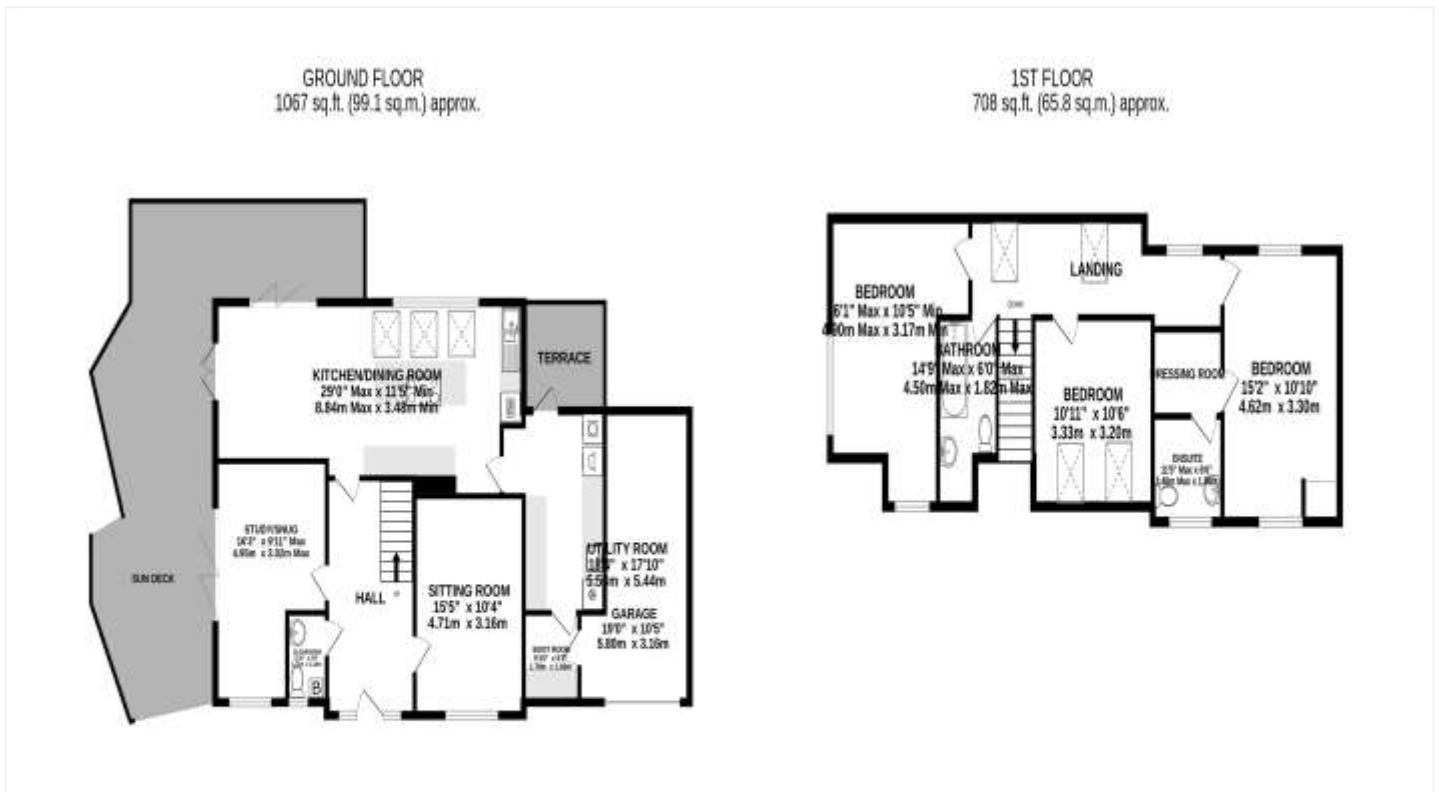
Bedroom Three:

Two double glazed windows to the front, a double radiator and power points. Family Bathroom: Obscure double glazed window to the front, a matching suite comprising of low-level WC with concealed cistern, a double vanity wash hand basin with mirror over and fitted double cupboard with and panel bath with central mono taps above, both wall and handheld shower, ceramic tiled flooring and a wall mounted ladder style radiator.

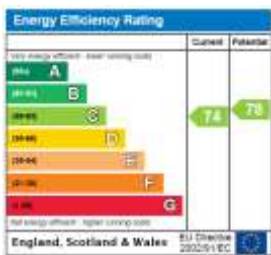
Outside: The front of the property is enclosed to one side by timber fencing, by brick walling to the opposite side and by a modular wing block to the front. There is pedestrian access by a patio path which leads to the front door and continues around to the;

Integral Garage: Accessed via a metal up and over, the garage has the benefit of both power and lighting with double glazed windows to the back and access into the plant room and utility room from the side. There is a further shingled driveway with additional off-road parking to one side and this leads to the Rear Garden. The property has a complete wraparound balcony which has been laid to patio.

Rear Garden: This is enclosed to both sides and rear by timber fencing and has been laid mainly to lawn with steps from both sides up onto the Terrace. The Terrace is Southerly and Westerly. It has outside lighting and cold tap.



This floorplan is for illustration purposes only and is not to scale. The position and size of doors, windows, appliances and other features are approximate.



Tenure: Freehold
 Council Tax: Band F
 Photovoltaic solar paneling supplementing the electricity
 Water supply: Southern Water
 Heating Boiler: Worcester
 Broadband: For supplier and speed we refer you to Ofcom

Where no figures are shown, we have been unable to ascertain the Information. All figures that are shown were correct at the time of printing.

Milford on Sea | 01590 642641 |



for every step...

winkworth.co.uk

Winkworth wishes to inform prospective buyers and tenants that these particulars are a guide and act as information only. All our details are given in good faith and believed to be correct at the time of printing but they don't form part of an offer or contract. No Winkworth employee has authority to make or give any representation or warranty in relation to this property. All fixtures and fittings, whether fitted or not are deemed removable by the vendor unless stated otherwise and room sizes are measured between internal wall surfaces, including furnishings.