



SOUTHERN ROW, W10
£2,650 PER MONTH

Winkworth



SOUTHERN ROW, W10

An immaculate two bedroom penthouse in a well-regarded, modern development in North Kensington. Tastefully decorated to a high standard, this apartment offers well-proportioned bedrooms, two modern bathrooms and a spacious and bright open plan reception leading onto a large wrap around balcony with panoramic views of London.

LOCATION

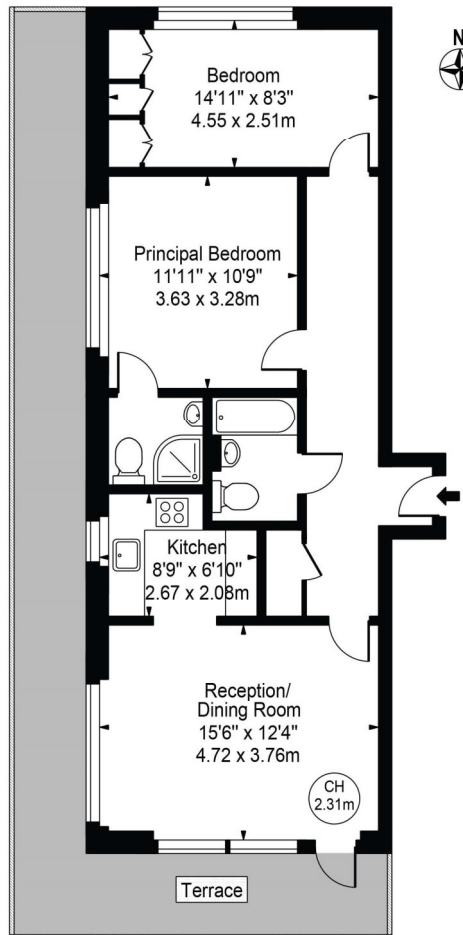
North Kensington's multicultural hotspot, Golborne Road is a prime example of a modern urban living offering plenty of unique restaurants, coffee shops and antique furniture stores. Renowned Portobello market and transport links at Ladbroke Grove are a stone throw away.





Bartholomew House

Approx. Gross Internal Area 699 Sq Ft - 64.94 Sq M

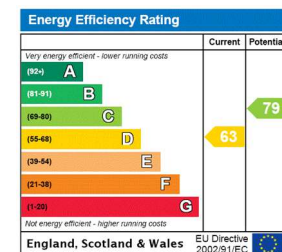


Fourth Floor

For Illustration Purposes Only - Not To Scale

This floor plan should be used as a general outline for guidance only and does not constitute in whole or in part an offer or contract. Any intending purchaser or lessee should satisfy themselves by inspection, searches, enquiries and full survey as to the correctness of each statement. Any areas, measurements or distances quoted are approximate and should not be used to value a property or be the basis of any sale or let.

Copyright Morriarti Photography & Design LTD



North Kensington | 020 7792 5000 | northkensington@winkworth.co.uk

winkworth.co.uk

Winkworth wishes to inform prospective buyers and tenants that these particulars are a guide and act as information only. All our details are given in good faith and believed to be correct at the time of printing but they don't form part of an offer or contract. No Winkworth employee has authority to make or give any representation or warranty in relation to this property. All fixtures and fittings, whether fitted or not are deemed removable by the vendor unless stated otherwise and room sizes are measured between internal wall surfaces, including furnishings.

