



**GREENWICH SOUTH STREET, GREENWICH, LONDON, SE10**  
**GUIDE PRICE £1,500,000-£1,600,000 FREEHOLD**

**WE ARE DELIGHTED TO OFFER THIS BEAUTIFUL AND LARGE FOUR BEDROOM, FOUR STOREY, FAMILY HOME THAT MEASURES C1924 SQ FT AND IS PERFECTLY LOCATED IN WEST GREENWICH, JUST ON THE EDGE OF THE SUPREMELY POPULAR ASHBURNHAM TRIANGLE!**

Greenwich | 02030533033 | [greenwich@winkworth.co.uk](mailto:greenwich@winkworth.co.uk)

**Winkworth**

for every step...

*[winkworth.co.uk](http://winkworth.co.uk)*





## DESCRIPTION:

Guide Price £1,500,000-£1,600,000. We are delighted to offer this beautiful and large four bedroom, four storey, family home that measures c1924 sq ft and is perfectly located in West Greenwich, just on the edge of the supremely popular Ashburnham Triangle!

Whilst the property is presented in good order throughout, it is our opinion that it would benefit from a refresh. The accommodation comprises of a lovely kitchen on the lower level, that opens onto a breakfast/dining room with hard wood flooring. On this level there is a WC, utility room and access to the garden. The hall floor has two large and bright receptions, with interlinking doors and hard wood flooring. There is also a separate storage room. The top two floor consist of four large double bedrooms, with the master room having a small dressing room. It's worth mentioning that both bedrooms on the first floor are open to each other, but can easily be divided if necessary. There are also two family bathrooms. The top floor landing has a beautiful stained glass skylight and there are cast iron fireplaces throughout. There is also access onto a small roof terrace which features superb views. The rear garden is certainly a good size and is westerly facing.

As mentioned, Greenwich South Street is a prime road in West Greenwich and is close to the town centre, which offers a fantastic array of shops and restaurants, along with Greenwich Market and The Royal Park, with its Observatory. Mainline Rail and DLR are within a 5-7 minute walk. The property has no chain. Your earliest viewing is recommended.

## AT A GLANCE

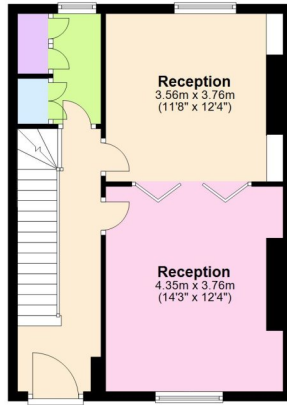
- stunning family home
- four bedrooms
- four storey
- c1924 sq ft
- West Greenwich location
- Ashburnham Triangle
- three receptions
- lovely rear garden
- lots of original features
- access to small roof terrace
- versatile layout



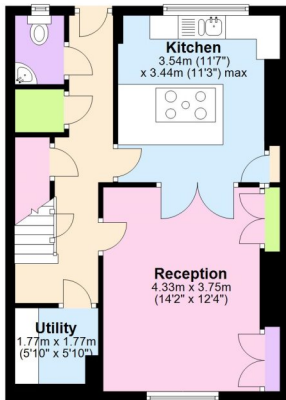




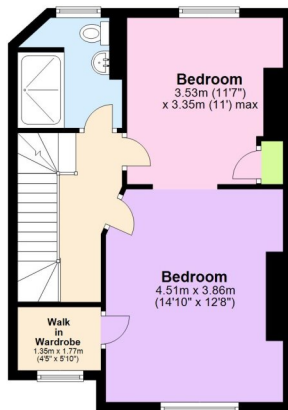
**Ground Floor**  
Approx. 45.1 sq. metres (485.1 sq. feet)



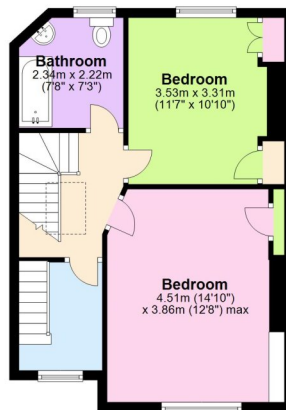
**Basement**  
Approx. 44.7 sq. metres (481.6 sq. feet)



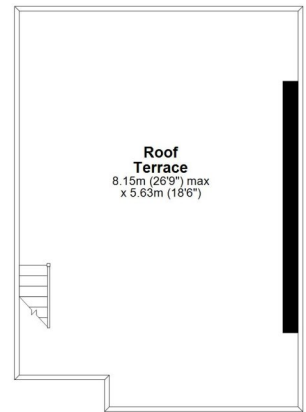
**First Floor**  
Approx. 44.4 sq. metres (478.4 sq. feet)



**Second Floor**  
Approx. 44.5 sq. metres (479.4 sq. feet)

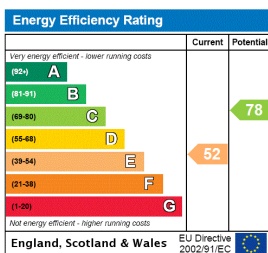


**Third Floor**  
Approx. 0.0 sq. metres (0.0 sq. feet)



Total area: approx. 178.8 sq. metres (1924.4 sq. feet)

This floorplan is for illustration purposes only and is not to scale. The position and size of doors, windows, appliances and other features are approximate.



**Tenure:** Freehold

**Council Tax Band:** G

Where no figures are shown, we have been unable to ascertain the information. All figures that are shown were correct at the time of printing.

Greenwich | 02030533033 | greenwich@winkworth.co.uk

**Winkworth**

for every step...

winkworth.co.uk

Winkworth wishes to inform prospective buyers and tenants that these particulars are a guide and act as information only. All our details are given in good faith and believed to be correct at the time of printing but they don't form part of an offer or contract. No Winkworth employee has authority to make or give any representation or warranty in relation to this property. All fixtures and fittings, whether fitted or not are deemed removable by the vendor unless stated otherwise and room sizes are measured between internal wall surfaces, including furnishings.