



TOMLINSON CLOSE, LONDON, E2
£475,000 LEASEHOLD

THREE DOUBLE BEDROOM DUPLEX APARTMENT IN SHOREDITCH WITH PRIVATE BALCONY

Shoreditch | 020 7749 7650 | shoreditch@winkworth.co.uk

Winkworth



DESCRIPTION:

A well-presented three double bedroom maisonette with private balcony located moments from the highly sought-after Brick Lane and Columbia Road. Situated in a quiet cul-de-sac this property is one of few that can boast a tranquil setting whilst being in the heart of the trendy Shoreditch area with its many boutique shops, bars and restaurants.

The property comprises; entrance hall, separate kitchen with a range of appliances, living room/diner with large windows and access to a private balcony, master bedroom, further two double bedroom and a bathroom with separate WC.

You have a wealth of local amenities on your doorstep along Bethnal Green Road as well as all that Columbia Road, Brick Lane and Spitalfields markets have to offer with an array of boutique shops, cafes and restaurants. You are also within easy access of Hoxton, Shoreditch High Street and Cambridge Heath Overground stations. plus Old Street and Bethnal Green underground stations.

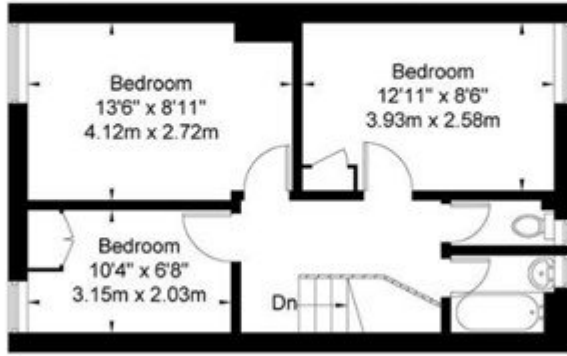
Winkworth



Winkworth

Tomlinson Close, E2 7LJ

Approx. Gross Internal Area = 75.3 sq m / 810 sq ft



Third Floor



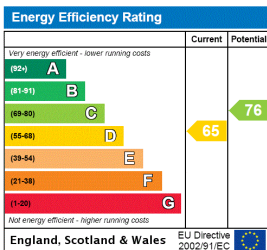
Second Floor

Ref

Copyright **BLEU PLAN**

The Floor plan is not to scale and measurements and areas shown are approximate and therefore should be used for illustrative purposes only. The plan has been prepared in accordance with the RICS code of Measuring Practice and whilst we have confidence in the information produced it must not be relied on. If there is any aspect of particular importance, you should carry out or commission your own inspection of the property.
Copyright © BLEUPLAN

This floorplan is for illustration purposes only and is not to scale. The position and size of doors, windows, appliances and other features are approximate.



Shoreditch | 020 7749 7650 | shoreditch@winkworth.co.uk



winkworth.co.uk

See things differently

Winkworth wishes to inform prospective buyers and tenants that these particulars are a guide and act as information only. All our details are given in good faith and believed to be correct at the time of printing but they don't form part of an offer or contract. No Winkworth employee has authority to make or give any representation or warranty in relation to this property. All fixtures and fittings, whether fitted or not are deemed removable by the vendor unless stated otherwise and room sizes are measured between internal wall surfaces, including furnishings.