



AEGEAN APARTMENTS, WESTERN GATEWAY, LONDON, E16
£1,975 PER MONTH FURNISHED

EXPERIENCE UPSCALE LIVING IN THIS FULLY FURNISHED ONE-BEDROOM APARTMENT, NESTLED ON THE FIRST FLOOR OF THE PRESTIGIOUS CAPITAL EAST DOCKSIDE DEVELOPMENT

Shoreditch | 020 7749 7650 | shoreditch@winkworth.co.uk



Tenant Fees Apply: Details of fees for tenant referencing, tenancy agreement admin fees and renewal fees are available on the Winkworth website and the link can be found with the displayed rent for the property. Tenants should ensure they are fully conversant with these upfront fees and other costs that are involved at the outset of the tenancy before making an offer to rent and your local Winkworth office will provide written details upon request.

winkworth.co.uk

See things differently



DESCRIPTION:

Experience upscale living in this one-bedroom apartment, nestled on the first floor of the prestigious Capital East dockside development. Perfectly positioned just a few 500m from Custom House on the Elizabeth Line, Royal Victoria on the DLR, and the iconic IFS Cloud Cable Car, this residence offers both convenience and charm.

Step inside to find a bright, open-plan lounge and dining area that flows seamlessly into a modern, fully fitted kitchen. The double bedroom is a tranquil retreat, while the contemporary shower room adds a touch of luxury. The highlight is the expansive south-facing balcony, presenting breathtaking views of Royal Victoria Dock.

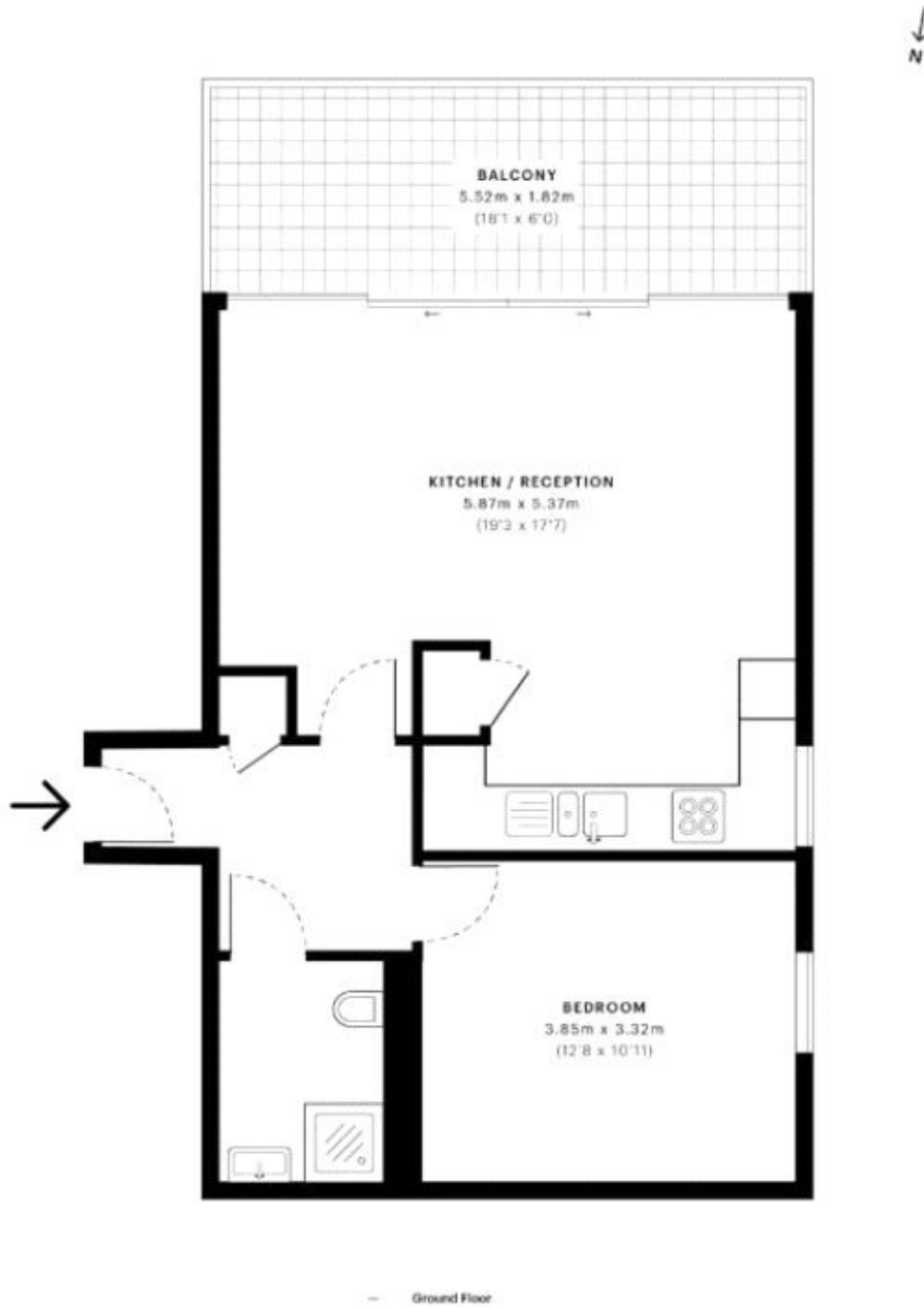
Residents also enjoy exclusive access to exceptional amenities, including a 24-hour concierge service and gymnasium complete with a rejuvenating sauna. This apartment is not just a home—it's a lifestyle.

Holding deposit: 1 weeks' rent.

Winkworth



Winkworth



This floorplan is for illustration purposes only and is not to scale. The position and size of doors, windows, appliances and other features are approximate.

Shoreditch | 020 7749 7650 | shoreditch@winkworth.co.uk



winkworth.co.uk

See things differently

Winkworth wishes to inform prospective buyers and tenants that these particulars are a guide and act as information only. All our details are given in good faith and believed to be correct at the time of printing but they don't form part of an offer or contract. No Winkworth employee has authority to make or give any representation or warranty in relation to this property. All fixtures and fittings, whether fitted or not are deemed removable by the vendor unless stated otherwise and room sizes are measured between internal wall surfaces, including furnishings.