



**GLOUCESTER TERRACE, BAYSWATER, W2
OFFERS OVER £750,000 LEASEHOLD**

SET WITHIN A HANDSOME VICTORIAN TERRACE, A WELL-PROPORTIONED, LIGHT, THREE BEDROOM DUPLEX APARTMENT, ON THE THIRD AND FOURTH FLOOR AND ONLY A SHORT STROLL FROM THE NEIGHBOURING WESTBOURNE GROVE AND QUEENSWAY.

Leasehold: About 89 Years Remaining | Service Charge: About £2,040 per annum | Ground Rent: About £10 per annum | Council Tax Band: F

Where no figures are shown, we have been unable to ascertain the information. All figures that are shown were correct at the time of printing.

Paddington & Bayswater | 020 7467 5770 | paddington@winkworth.co.uk

Winkworth

for every step...

winkworth.co.uk



DESCRIPTION:

Gloucester Terrace, with its white stucco period terraces, is a sought after central London location in the vicinity of Paddington and Bayswater. Located in the City of Westminster - W2, it runs northwards from Lancaster Terrace and Hyde Park before curving round to meet Porchester Square. The property is well placed for transport links and amenities - Royal Oak (Hammersmith & City / Circle lines), Queensway (Central line - zone 1) and Paddington mainline station (Heathrow Express / Elizabeth line).



Winkworth

for every step...




Winkworth

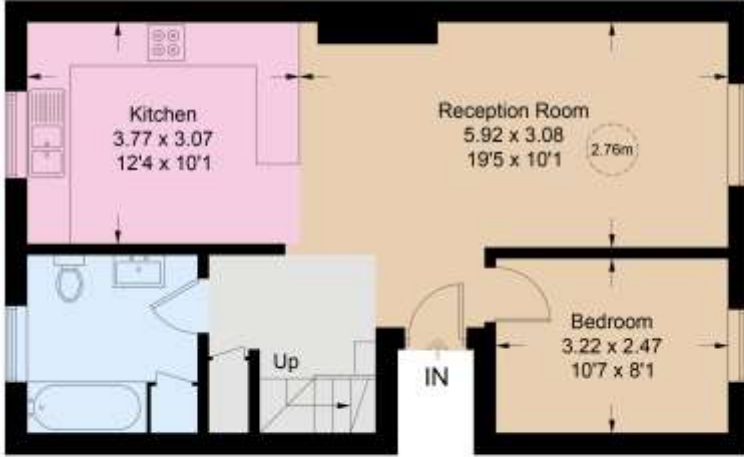
for every step...

Gloucester Terrace

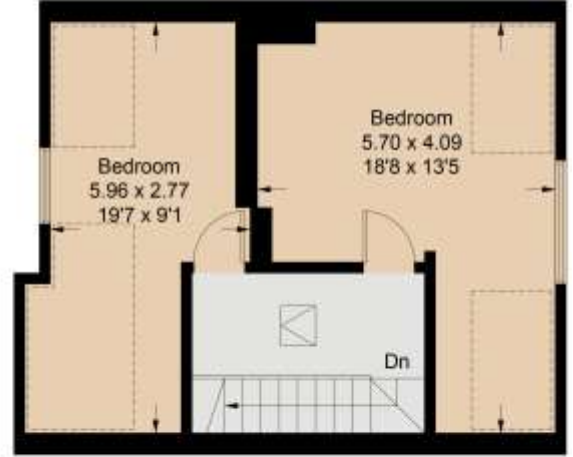
Approximate Gross Internal Area = 92.2 sq m / 992 sq ft



 = Reduced headroom below 1.5m / 5'0"



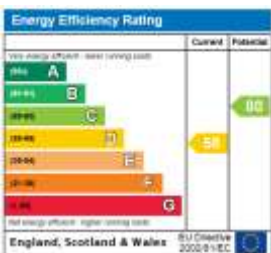
Third Floor



Fourth Floor

Illustration for identification purposes only, measurements are approximate, not to scale. floorplansUsketch.com © (ID1096448)

This floorplan is for illustration purposes only and is not to scale. The position and size of doors, windows, appliances and other features are approximate.



Paddington & Bayswater | 020 7467 5770 | paddington@winkworth.co.uk



for every step...

winkworth.co.uk

Winkworth wishes to inform prospective buyers and tenants that these particulars are a guide and act as information only. All our details are given in good faith and believed to be correct at the time of printing but they don't form part of an offer or contract. No Winkworth employee has authority to make or give any representation or warranty in relation to this property. All fixtures and fittings, whether fitted or not are deemed removable by the vendor unless stated otherwise and room sizes are measured between internal wall surfaces, including furnishings.