



MILTON COURT, LONDON, SW18
£2,150 PER MONTH FURNISHED

A bright and spacious two bedroom two bathroom flat recently redecorated throughout in a gated development between Putney & Wandsworth

Putney | 020 8877 1000 | putney@winkworth.co.uk

Winkworth

for every step...

winkworth.co.uk



DESCRIPTION:

This light and airy apartment extends to 881 sq ft and has just been redecorated throughout.

Situated on the first floor of a secure gated development there is a spacious entrance hall with plenty of storage. The reception room benefits from dual aspect next to which is a generous kitchen. The master bedroom features ample built-in wardrobes and ensuite bathroom. The second bedroom is a good double and is serviced by a second bathroom.

Milton Court forms part of an attractive development in Chesterton Close and the flat also includes off street parking and access to communal gardens. Situated just off the Putney Bridge Road affording easy access to the excellent shopping facilities of Southside Shopping Centre, a stroll from Wandsworth Park and River Thames and easy access to the transport links of East Putney underground (District Line) and Wandsworth Town (South West Rail).



ACCOMMODATION

Long Let, 2 Bedrooms, 1 Reception Rooms, 2 Bathrooms, Flat/Apartment, First Floor, Communal Gardens, Off Street Parking, Modern, Furnished, 881 Approx Sq Ft



Milton Court

Winkworth

Approximate Gross Internal Area Total = 81.9 sq m / 881 sq ft

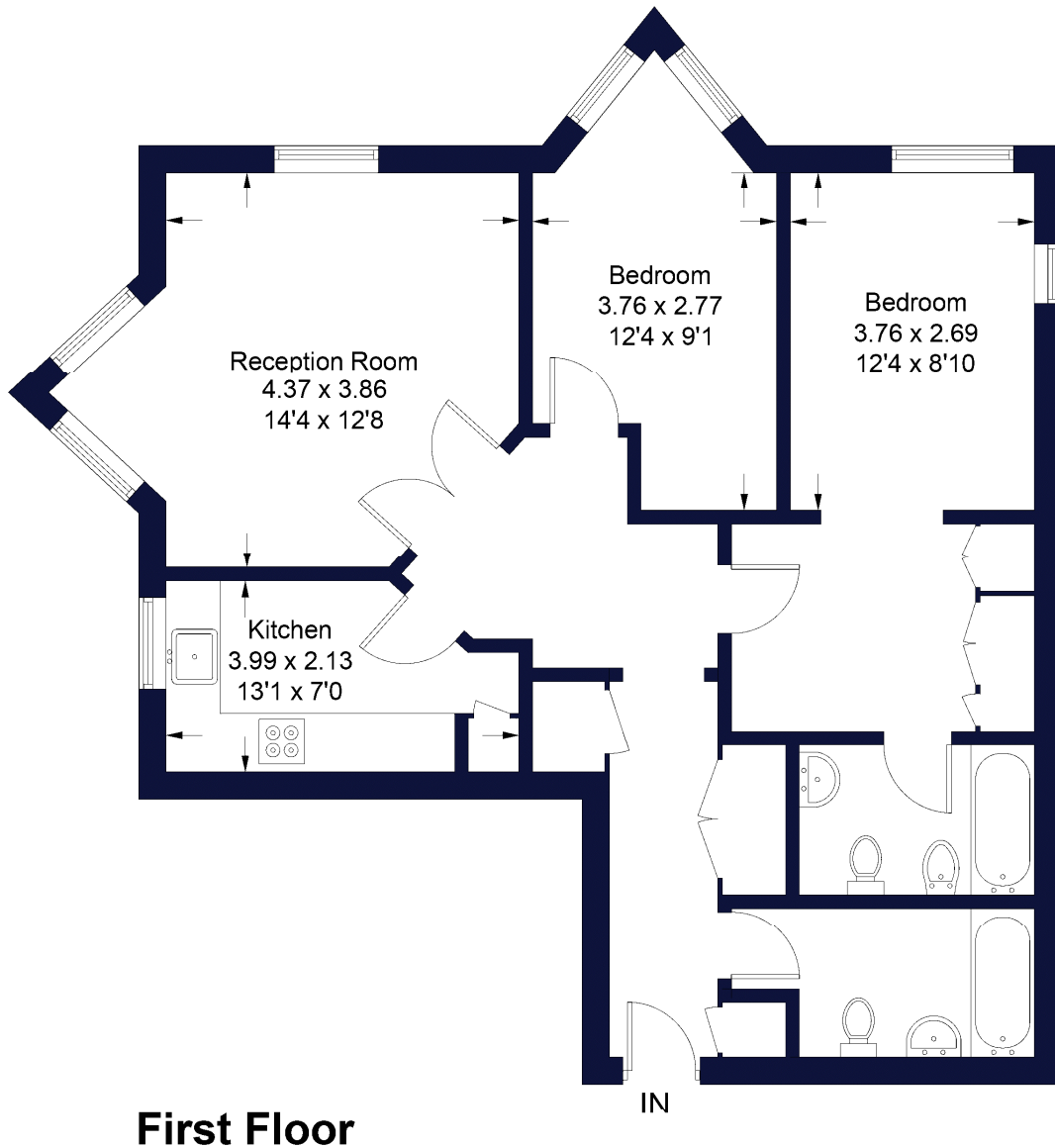
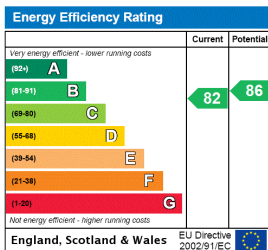


Illustration for identification purposes only, measurements are approximate, not to scale. FloorplansUsketch.com © 2018 (ID416069)

This floorplan is for illustration purposes only and is not to scale. The position and size of doors, windows, appliances and other features are approximate.



Deposit: 5 weeks' rent

Holding Deposit: 1 week's rent

Council Tax Band: TBC

Where no figures are shown, we have been unable to ascertain the information. All figures that are shown were correct at the time of printing.

Putney | 020 8877 1000 | putney@winkworth.co.uk

Winkworth

for every step...

winkworth.co.uk

Winkworth wishes to inform prospective buyers and tenants that these particulars are a guide and act as information only. All our details are given in good faith and believed to be correct at the time of printing but they don't form part of an offer or contract. No Winkworth employee has authority to make or give any representation or warranty in relation to this property. All fixtures and fittings, whether fitted or not are deemed removable by the vendor unless stated otherwise and room sizes are measured between internal wall surfaces, including furnishings.