



ALEXANDRA ROAD, LONDON, N15
£750,000 FREEHOLD

DESCRIPTION:

Arranged over three beautifully presented floors, this charming four-bedroom Victorian home seamlessly blends period charm with modern design.

Harringay | 020 8800 5151 | harringay@winkworth.co.uk

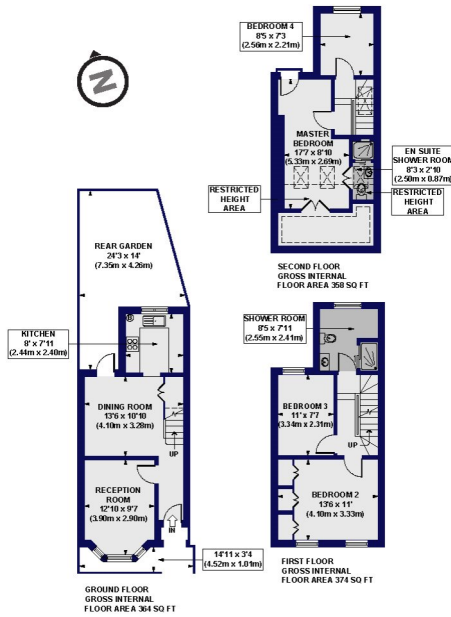


for every step...

winkworth.co.uk

Alexandra Road, N15

Approx. Gross Internal Floor Area 1096 sq. ft / 101.85 sq. m (Including Restricted Height Area)
 Approx. Gross Internal Floor Area 978 sq. ft / 91.73 sq. m (Excluding Restricted Height Area)



All measurements of walls, doors, windows, fittings and appliances, including their size and location, are shown as standard sizes and do not constitute a warranty or representation in the sales particulars. All measurements are taken from the internal or external face of the walls, doors and windows as shown in the floor plan. Dimensions for fixtures, fittings and appliances are shown as standard sizes and do not constitute a warranty or representation in the sales particulars.



This floorplan is for illustration purposes only and is not to scale. The position and size of doors, windows, appliances and other features are approximate.

Energy Efficiency Rating		Current	Potential
Very energy efficient - lower running costs			
(92-100)	A		
(81-91)	B		
(69-80)	C		
(55-68)	D		
(39-54)	E		
(21-38)	F		
(1-20)	G		
Not energy efficient - higher running costs			
England, Scotland & Wales		69	86
EU Directive 2002/91/EC			

Tenure: Freehold

Term: 0 year and 0 months

Service Charge: £0 per annum

Ground Rent: £ 0 Annually (subject to increase)

Council Tax Band:

Where no figures are shown, we have been unable to ascertain the information. All figures that are shown were correct at the time of printing.

Harringay | 020 8800 5151 | harringay@winkworth.co.uk



for every step...

winkworth.co.uk

Winkworth wishes to inform prospective buyers and tenants that these particulars are a guide and act as information only. All our details are given in good faith and believed to be correct at the time of printing but they don't form part of an offer or contract. No Winkworth employee has authority to make or give any representation or warranty in relation to this property. All fixtures and fittings, whether fitted or not are deemed removable by the vendor unless stated otherwise and room sizes are measured between internal wall surfaces, including furnishings.