



4, QUEENS DRIVE, LONDON, N4
£2,450 PER MONTH

A STUNNING TWO DOUBLE BEDROOM FLAT WITH ACCESS TO BEAUTIFUL COMMUNAL GARDENS

Highbury | 0207 989 7000 | highbury@winkworth.co.uk

Winkworth

Tenant Fees Apply: Details of fees for tenant referencing, tenancy agreement admin fees and renewal fees are available on the Winkworth website and the link can be found with the displayed rent for the property. Tenants should ensure they are fully conversant with these upfront fees and other costs that are involved at the outset of the tenancy before making an offer to rent and your local Winkworth office will provide written details upon request.

winkworth.co.uk

See things differently



DESCRIPTION:

This outstanding two bedroom period property is perfectly located close to excellent transport links and is finished to an impeccable standard.

Retaining many period features this beautiful home benefits from an abundance of fitted storage and comprises two double bedrooms, spacious reception room that receives lots of natural light, modern kitchen, immaculate tiled bathroom suite and access to pretty communal gardens.

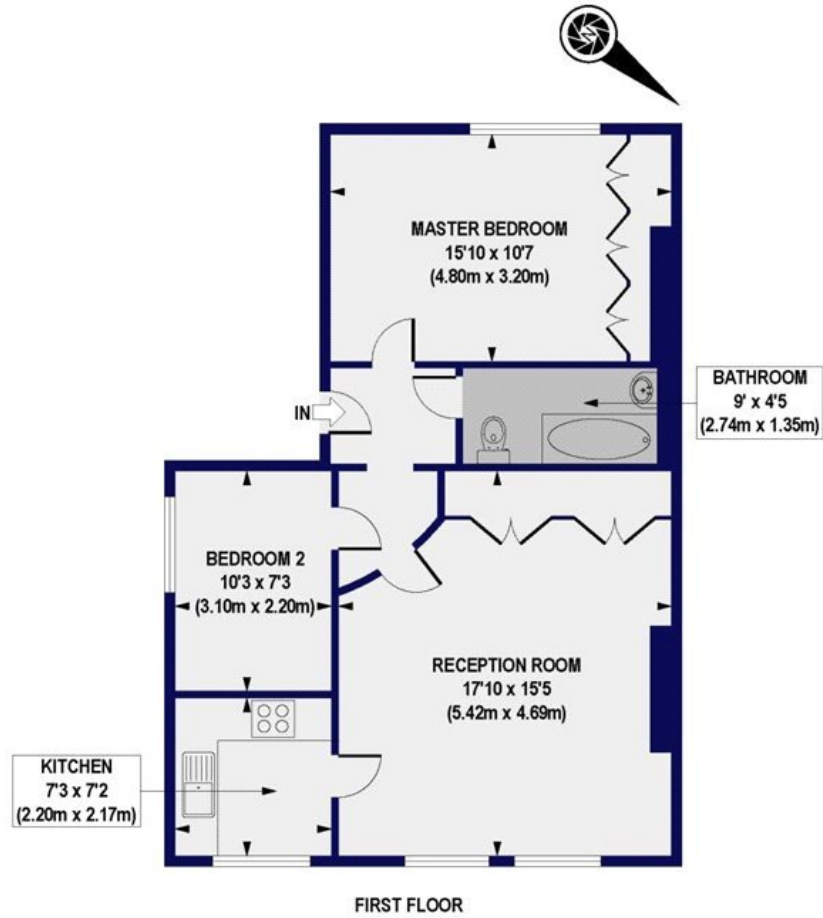
Finsbury Park Station is less than 200m away and there are plenty of amenities within easy reach. Green spaces nearby include Finsbury Park and Clissold Park.

Winkworth



Winkworth

Queens Drive, N4
Approx. Gross Internal Floor Area 653 sq. ft / 60.69 sq. m



All measurements of walls, doors, windows, fittings and appliances, including their size and location, are shown as standard sizes and do not constitute any warranty or representation by the seller, their agent or CP Creative. Any intending purchaser must satisfy himself by inspection or otherwise as to the correctness of the information contained in these plans.

Winkworth

This floorplan is for illustration purposes only and is not to scale. The position and size of doors, windows, appliances and other features are approximate.

Highbury | 0207 989 7000 | highbury@winkworth.co.uk

Winkworth

winkworth.co.uk

See things differently

Winkworth wishes to inform prospective buyers and tenants that these particulars are a guide and act as information only. All our details are given in good faith and believed to be correct at the time of printing but they don't form part of an offer or contract. No Winkworth employee has authority to make or give any representation or warranty in relation to this property. All fixtures and fittings, whether fitted or not are deemed removable by the vendor unless stated otherwise and room sizes are measured between internal wall surfaces, including furnishings.