

Winkworth

Flat 28, Lakeview Court, London, SW19 6PP





A spectacular four double bedroom duplex apartment, boasting two balconies and a terrace with breathtaking views over Wimbledon Park Golf Course and Wimbledon Park.

Upon entering, you'll be captivated by panoramic views on both sides of the spacious open-plan reception room, creating a beautiful flow of natural light through the space. One side of the room is lined with floor-to-ceiling glass windows and a sliding door that opens onto a long balcony overlooking Wimbledon Park, while the opposite side has two large casement windows showcasing expansive views over South West London. Adjacent to this room is a separate kitchen with modern appliances, sleek wooden flooring and neutral décor. As you move towards the staircase, you'll find a double bedroom with built-in storage and a private balcony, a convenient storage cupboard, and a family bathroom with glass shower, mirrored wall and elegant floral tiles.

Ascending to the upper level, you'll discover three additional double bedrooms, all with stunning views. One has the added luxury of a walk-in wardrobe, and another has direct access to the generously sized roof terrace, awaiting your personalisation, also accessed from the hallway. This floor is completed by a second family bathroom equipped with a shower bath, ample storage and a heated towel rack for added comfort.

Lakeview Court is a well-maintained private block, conveniently situated between Southfields and Wimbledon Village. Southfields Tube, the All England Lawn Tennis Club, and the expansive open space of Wimbledon Common, are ideally just a short walk away. Residents benefit from lift access, a private garage, visitor's parking, and communal gardens and games room.



Score	Energy rating	Current	Potential
92+	A		
81-91	B		
69-80	C	69 C	80 C
55-68	D		
39-54	E		
21-38	F		
1-20	G		

Features

- 4 Double Bedrooms
- Two Balconies
- Roof Terrace
- Lift Access
- Garage
- Communal Gardens & Games Room
- S/C Approx. £10,000 PA

Leasehold

Approx. 142 Yr

Internal Area

Total 1712 sq. ft/ 159.06 sq. m

Price

£1,350,000

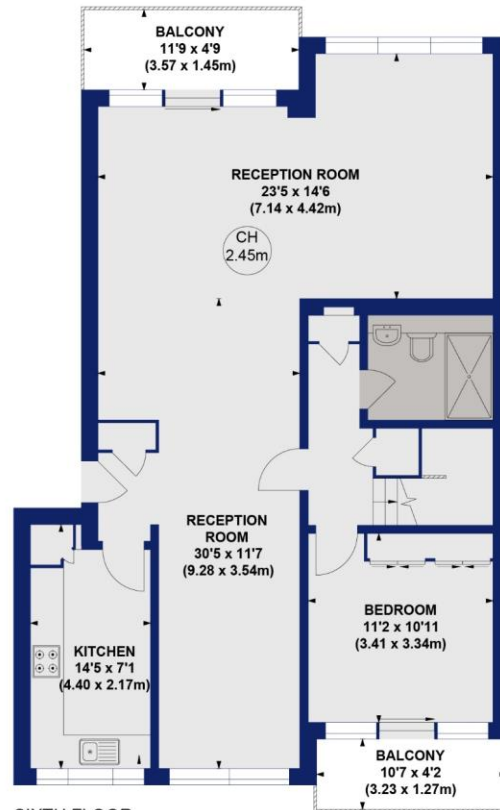
Lakeview Court, SW19

Approx. Gross Internal Area 159.06 sq m / 1712 sq ft

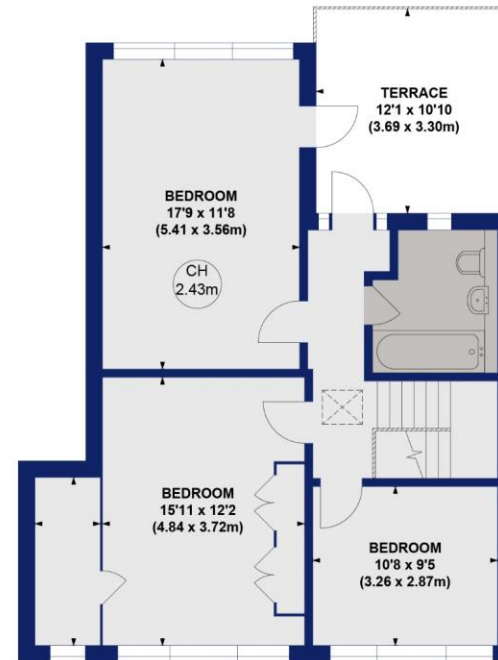
Approx. Gross External Area 23.05 sq m / 248 sq ft

Total Approx. Gross External & Internal Area 182.11 sq m & 1960 sq ft

Key :
CH - Ceiling Height



SIXTH FLOOR
GROSS INTERNAL
FLOOR AREA 978 SQ FT



SEVENTH FLOOR
GROSS INTERNAL
FLOOR AREA 734 SQ FT

Not to scale, for guidance only and must not be relied upon as a statement of fact.
All measurements and areas are approximate only

Winkworth