



28 THORNBURY ROAD  
HENGISTBURY HEAD  
BH6 4HS

ASKING PRICE  
£650,000  
FREEHOLD

“A three bedroom,  
two reception room  
detached chalet style  
house sitting proudly  
on a corner plot in the  
heart of Hengistbury  
Head”

**Winkworth**

for every step...



ASKING PRICE £650,000

Sought After Location  
Excellent School Catchments  
Three Double Bedrooms  
Two Reception Rooms  
Two Detached Garages  
Off Road Parking For Several Vehicle  
Expansive Garden  
Scope To Extend STPP

EPC: TBC | COUNCIL TAX: E | FREEHOLD: I

01202 434365  
southbourne@winkworth.co.uk





## Why Thornbury Road?

Sitting in the heart of Hengistbury Head, Thornbury Road enjoys a convenient location just 300 metres from Wick Village. Wick is a peaceful picturesque village set alongside the river Stour. It sits between Southbourne and Christchurch. Whether it's taking a leisurely stroll down to the tea gardens in Tuckton for an ice cream, having a picnic on the grass while enjoying the view of Christchurch Priory or kayaking down the river, Tuckton & Wick offer a little slice of peace and tranquility. Nearby Tuckton is 900 metres away where you can find a parade of convenience shops and bus routes taking you to Christchurch, Southbourne and Bournemouth. Southbourne's vibrant high street has been rejuvenated over recent years to include a range of independent cafés, restaurants and shop. Pokesdown train station is also located nearby for anyone looking to commute.

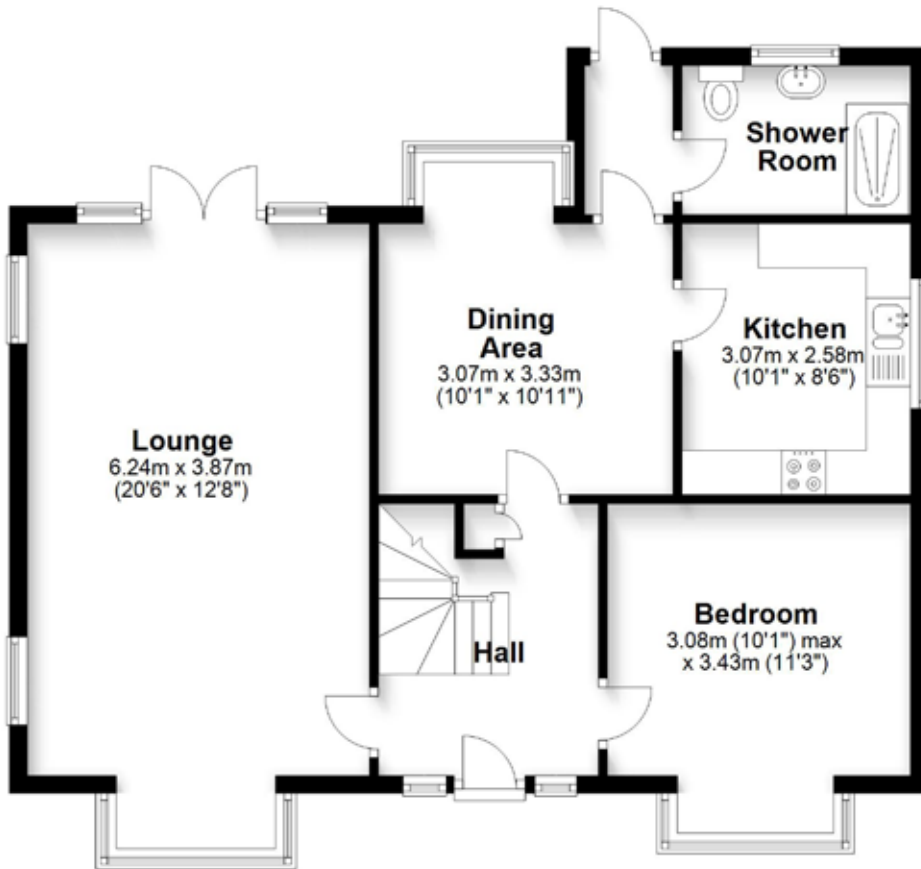
This three bedroom, two reception chalet style house has been occupied by the current owner since 1960. The property would benefit from modernisation throughout but currently enjoys a spacious dual aspect lounge, flooded with natural light. The kitchen has a range of units with space for appliances leading through to a dining area. There is a further ground floor reception room currently used as a bedroom along with a ground floor bathroom.

Located on the first floor are two double bedrooms, serviced by the family bathroom which includes a bath with overhead shower, wash hand basin and wc.

The property sits on a corner plot with driveways and garages on both Thornbury Road and Glendale Road with a wrap around garden that is mainly laid to lawn with mature trees and shrubs offering a good degree of seclusion.

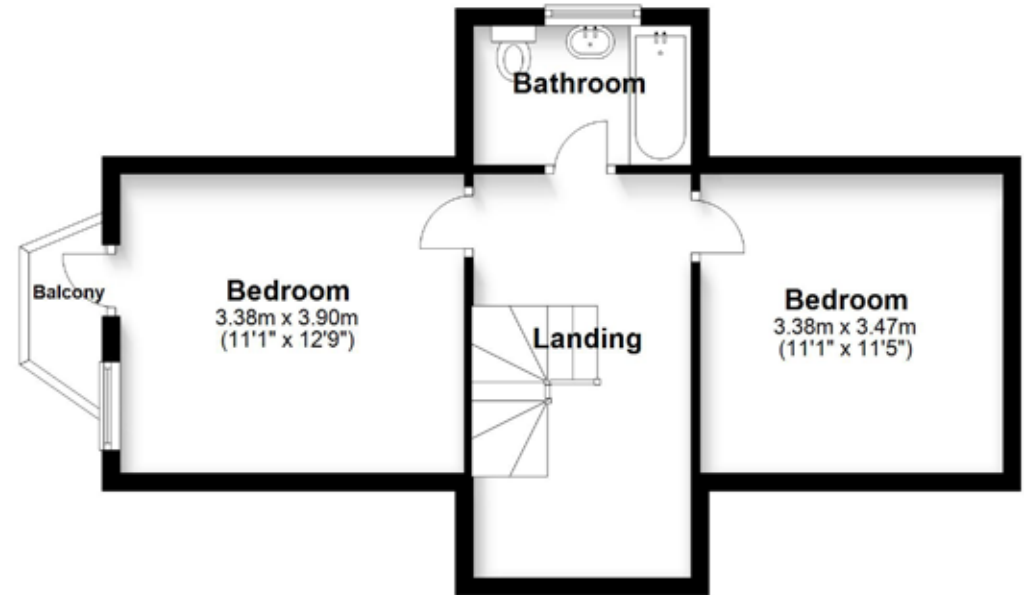
## Ground Floor

Approx. 70.9 sq. metres (762.8 sq. feet)



## First Floor

Approx. 41.9 sq. metres (450.5 sq. feet)



**Total area: approx. 112.7 sq. metres (1213.3 sq. feet)**

Bournemouth Energy Floor Plans are provided for illustration/identification purposes only. Not drawn to scale, unless stated and accept no responsibility for any error, omission or mis-statement. Dimensions shown are to the nearest 7.5 cm / 3 inches. Total approx area shown on the plan may include any external terraces, balconies and other external areas. To find out more about Bournemouth Energy please visit [www.bournemouthenergy.co.uk](http://www.bournemouthenergy.co.uk) (Tel: 01202 556006)  
Plan produced using PlanUp.

### DISCLAIMER:

Winkworth wishes to inform prospective buyers that these particulars are a guide and act as information only. All our details are given in good faith and believed to be correct at the time of issue but they do not form part of an offer or contract. No Winkworth employee has authority to make or give any representation or warranty in relation to this property. All fixtures and fittings, whether fitted or not are deemed removable by the vendor unless stated otherwise and room sizes are measured between internal wall surfaces, including furnishings.





Ariana Woolrych  
awoolrych@winkworth.co.uk  
07918 932490  
Winkworth Southbourne  
29 Southbourne Grove,  
Bournemouth, Dorset, BH6  
3QT

01202 434365  
southbourne@winkworth.co.uk  
winkworth.co.uk/southbourne

“Family is very important to Ariana as she comes from a large Greek family. She enjoys travelling, entertaining and keeping fit.

Property has been part of Ariana’s life since she was a baby with her father being a developer and her mother running and managing country homes. She started her career in agency in 2012 locally and her partner is also an estate agent in the Canford Cliffs area.

In 2021 Ariana started her SAVA qualification, which once complete, will make her a qualified RICS surveyor and one of the most knowledgeable people on the Southbourne high street to have visit your home.”

**Winkworth**

for every step...