



BRIXTON WATER LANE, SW2
OFFERS IN EXCESS OF £600,000 LEASEHOLD

SPLIT-LEVEL PERIOD FLAT WITH PATIO, NESTLED BETWEEN BRIXTON AND HERNE HILL

Herne Hill | 0207 501 8950 | hernehill@winkworth.co.uk

Winkworth

for every step...

winkworth.co.uk



DESCRIPTION:

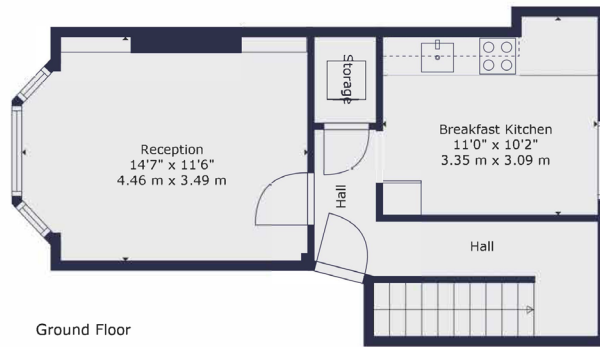
Tucked between the vibrant heartbeats of Brixton and Herne Hill, this charming two-bedroom split-level home offers a unique opportunity to reimagine a characterful period conversion in one of South London’s most sought-after locations.

Arranged over the lower and raised ground floors, the property comprises two well-proportioned bedrooms on the lower level, alongside a bathroom and additional storage. Upstairs, the bright reception room offers leafy street views, while the adjoining kitchen provides a practical layout and scope for updating. A small patio at the rear offers a peaceful spot for a morning coffee or light planting, and a private front patio delivers additional outdoor space—rare for a flat in this location. Just a few doors down from the gates of Brockwell Park and backing directly onto its leafy expanse, the home enjoys an enviable position for lovers of green space. The iconic lido, weekend markets, and scenic walking trails are practically on the doorstep.

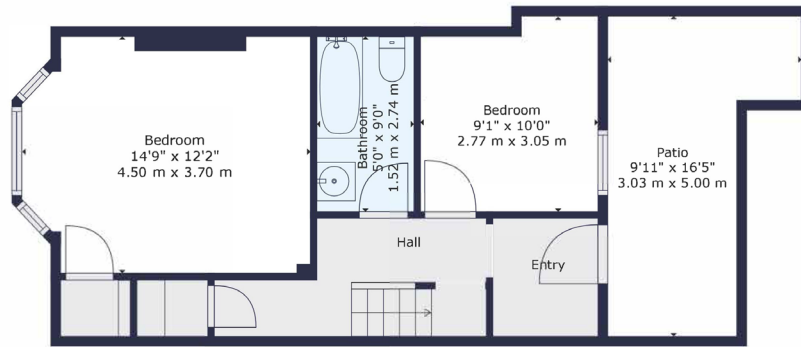
Perfectly placed between Brixton and Herne Hill, residents benefit from an abundance of cafés, restaurants, independent shops and vibrant community life all within easy walking distance. Several reputable nurseries and primary schools are also nearby, making this an ideal purchase for both professionals and young families alike. Herne Hill and Brixton stations offer excellent transport links into the City and West End, with numerous bus routes available just outside the property.







Ground Floor



Lower Ground Floor

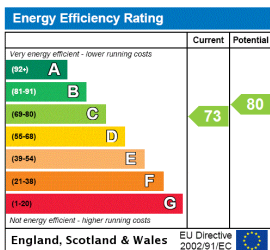
TOTAL: 809 sq. ft, 75 m²
 LOWER GROUND FLOOR: 442 sq. ft, 41 m², GROUND FLOOR: 367 sq. ft, 34 m²
 EXCLUDED AREAS: PATIO: 123 sq. ft, 11 m², STORAGE: 14 sq. ft, 1 m²

All measurements of walls, doors, windows, fittings and appliances, including their size and location, are shown as standard sizes and do not constitute any warranty or representation by the seller, their agent or Winkworth. Any intending purchaser must satisfy himself by inspection or otherwise as to the correctness of the information contained in these plans. This plan is for illustrative purposes only and should be used as such by any prospective purchasers.



Winkworth

This floorplan is for illustration purposes only and is not to scale. The position and size of doors, windows, appliances and other features are approximate.



Tenure: Leasehold

Term: 103 year and 8 months

Service Charge: £360 per annum

Ground Rent: £10 Annually

Council Tax Band: D

Where no figures are shown, we have been unable to ascertain the information. All figures that are shown were correct at the time of printing.

Herne Hill | 0207 501 8950 | hernehill@winkworth.co.uk

Winkworth

for every step...

winkworth.co.uk

Winkworth wishes to inform prospective buyers and tenants that these particulars are a guide and act as information only. All our details are given in good faith and believed to be correct at the time of printing but they don't form part of an offer or contract. No Winkworth employee has authority to make or give any representation or warranty in relation to this property. All fixtures and fittings, whether fitted or not are deemed removable by the vendor unless stated otherwise and room sizes are measured between internal wall surfaces, including furnishings.