



**SOLWAY ROAD, EAST DULWICH, LONDON, SE22**  
**OIEO £600,000 SHARE OF FREEHOLD**

## **A BEAUTIFULLY PRESENTED TWO BEDROOM GROUND FLOOR FLAT IS SITUATED IN A CENTRAL EAST DULWICH LOCATION**

Dulwich | 020 8299 2722 | [dulwich@winkworth.co.uk](mailto:dulwich@winkworth.co.uk)

Tenure Share of Freehold | Council Tax Band B – London Borough of Southwark

**Winkworth**

[winkworth.co.uk](http://winkworth.co.uk)

See things differently



## DESCRIPTION:

A beautifully presented two bedroom ground floor flat is situated in a central East Dulwich location. The property offers two good size double bedrooms, reception, modern kitchen-diner, bathroom and access to a private garden to rear. Located in close proximity to the bars, restaurants and shops on Lordship Lane as well as Peckham Rye is also a short walk away. There are plenty of local primary schools and transport links are provided via East Dulwich or Peckham Rye including those on the East London tube line. This is a wonderful flat in a superb location.

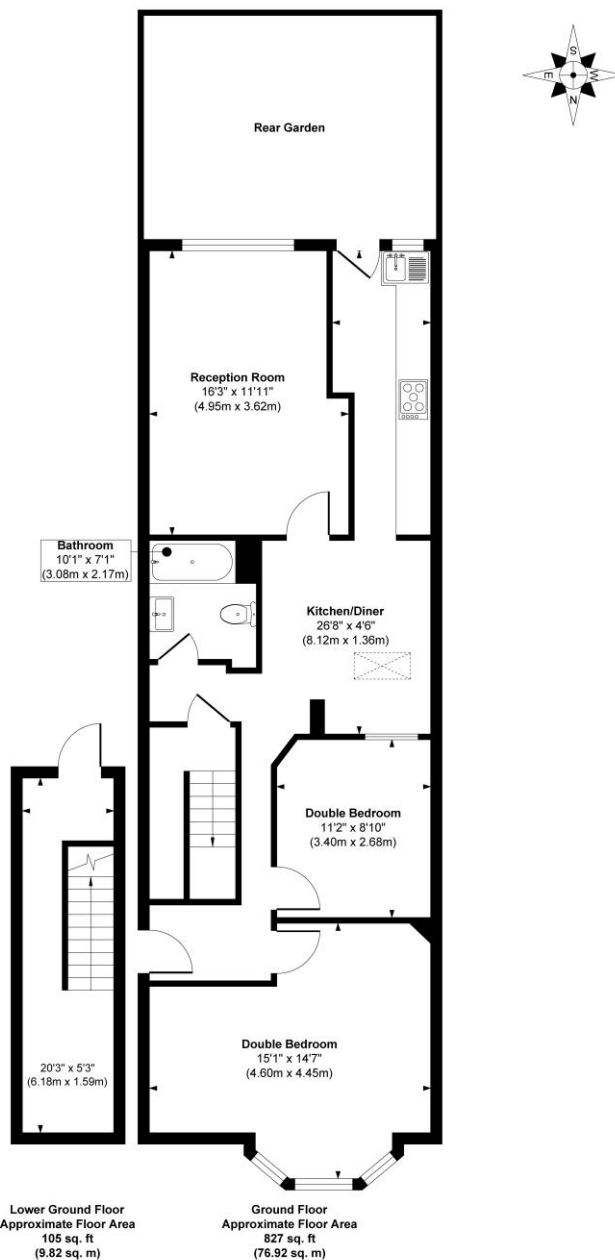
## AT A GLANCE

- Two-bedroom ground floor flat
- Two good-sized double bedrooms
- Private garden
- Prime Location
- Excellent Transport Links





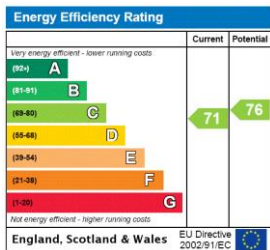
# Solway Road



**Approx. Gross Internal Floor Area 932 sq. ft / 86.74 sq. m**

Illustration for identification purposes only, measurements are approximate, not to scale.  
Produced by Elements Property

This floorplan is for illustration purposes only and is not to scale. The position and size of doors, windows, appliances and other features are approximate.



Dulwich | 020 8299 2722 | dulwich@winkworth.co.uk



winkworth.co.uk

See things differently

Winkworth wishes to inform prospective buyers and tenants that these particulars are a guide and act as information only. All our details are given in good faith and believed to be correct at the time of printing but they don't form part of an offer or contract. No Winkworth employee has authority to make or give any representation or warranty in relation to this property. All fixtures and fittings, whether fitted or not are deemed removable by the vendor unless stated otherwise and room sizes are measured between internal wall surfaces, including furnishings.