



BAILEY LANE, SALISBURY, WILTSHIRE, SP2 0FR
£185,000 LEASEHOLD

Winkworth



BAILEY LANE, SALISBURY, WILTSHIRE, SP2 0FR

A superbly presented, upper floor apartment with two double bedroom/two bath accommodation within an attractive block in the much sought-after Redrow development on the edge of Wilton. Offered with vacant possession. EPC: B

This purpose-built apartment, with a pleasing outlook on two sides, is located on the second floor of an attractive block of twelve units on the edge of this modern development. The comfortable, roomy accommodation has the benefit of gas fired central heating and double glazing and includes an entrance hall with storage cupboards off leading to two double bedrooms, one with an en-suite shower room, a spacious bathroom and an open-plan living space comprising sitting room and kitchen/dining room which is well fitted with a range of units to three walls including integral appliances. the property is available with vacant possession and we urge an early viewing.

Outside there are communal wooded and grassed grounds with a children's play area. There is a bicycle store and a car park with marked, allocated parking.



AT A GLANCE

- Entrance hall
- Open plan kitchen/sitting room
- Two double bedrooms
- Family bathroom
- Ensuite shower room

- Allocated parking
- Communal grounds

LOCATION

The property is situated in the established Redrow development, located on the outskirts of the historic town of Wilton, some 3 miles from the centre of Salisbury. Wilton has an excellent general range of shops, centred around a market square with its Thursday market day. There is a selection of pubs and cafes, churches including the wonderful Italianate style C of E Parish church, doctors' and dental practices and there is regular public transport into Salisbury. The cathedral city has a much wider range of shops and a wide variety of international restaurants and pubs based around the delightful market square. Further amenities include schools and colleges, and leisure facilities such as, theatres, cinemas and a leisure centre and a selection of sports clubs. There is a growing Arts and Cultural community and the city has a mainline rail station with services to London (Waterloo) and the West Country.

DIRECTIONS

What3Words- bachelor.agreement.couches

Leave Salisbury, in a north-westerly direction, along the A36 toward Wilton and at the roundabout just beyond Wilton House Garden Centre take the third exit into The Avenue. Turn second right into Bailey Lane and follow the road round the right-hand bend, proceeding to the T-junction at the bottom. Turn left and the flats will be found on the right.

Council Tax Band B

EPC Band B

Gas central heating

Mains drainage

Double glazing

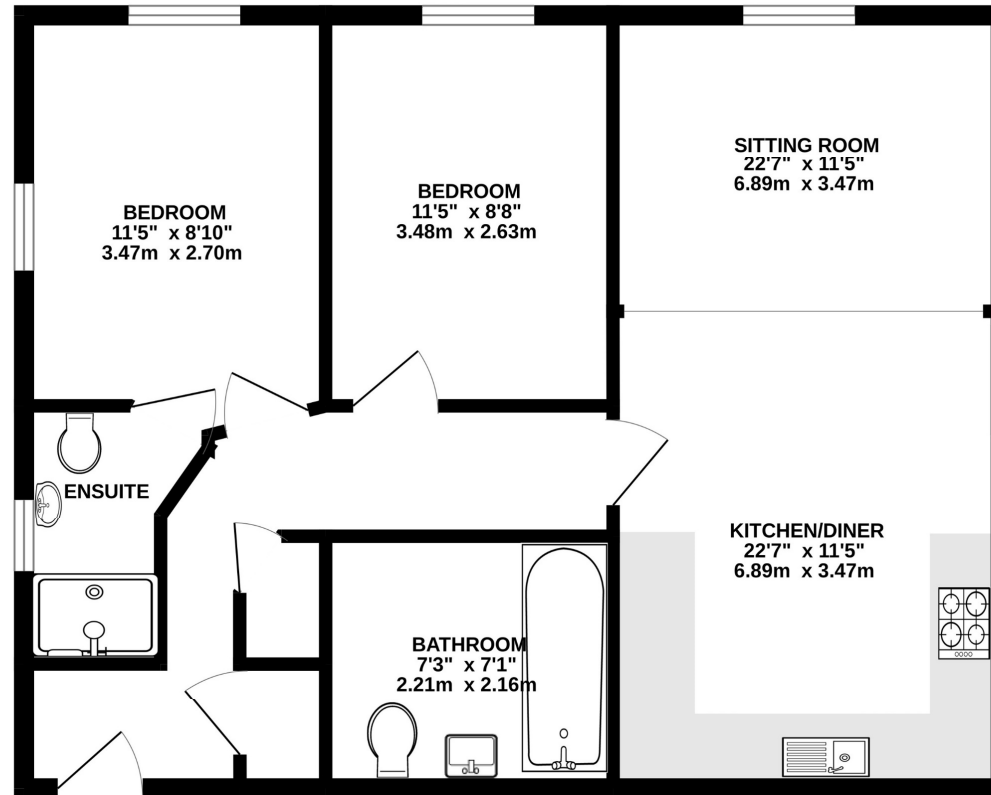
Ultrafast broadband available

Mobile coverage inside likely with O2 and EE

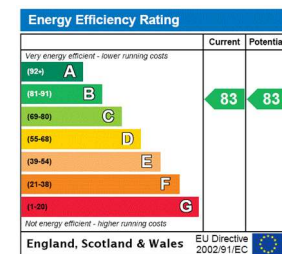
Mobile coverage outside likely with EE, Three, O2 and Vodafone



SECOND FLOOR
652 sq.ft. (60.6 sq.m.) approx.



TOTAL FLOOR AREA : 652 sq.ft. (60.6 sq.m.) approx.
Made with Metropix ©2024



Salisbury | 01722 443 000 | salisbury@winkworth.co.uk

winkworth.co.uk

Winkworth wishes to inform prospective buyers and tenants that these particulars are a guide and act as information only. All our details are given in good faith and believed to be correct at the time of printing but they don't form part of an offer or contract. No Winkworth employee has authority to make or give any representation or warranty in relation to this property. All fixtures and fittings, whether fitted or not are deemed removable by the vendor unless stated otherwise and room sizes are measured between internal wall surfaces, including furnishings.

Winkworth