



FLAT 1 8 DONNINGTON SQUARE NEWBURY RG14 1PJ

****NO ONWARD CHAIN**** A spacious duplex apartment in a stunning period building with access to fabulous gardens.

The apartment is on the first and second (top) floors of this landmark building and has reception hall, bedroom with built in storage and a bathroom on the first floor.

The original staircase leads up to the top floor with a well-proportioned sitting room overlooking the gardens, a stylish kitchen with enough room for a table that occupies the tower and is bright and airy and a good sized double bedroom with lots of built in wardrobes. This property also comes equipped with large loft storage space.

The apartment has access to the most beautiful communal grounds to the rear and a garage. There are electric charging points on the street.

****Library Photos****



Winkworth

AT A GLANCE

- 1024 Square feet/ 95 Square metres
- Duplex Apartment
- Two bedrooms
- Bathroom
- Sitting room
- Kitchen/breakfast room
- Garage
- Beautiful communal gardens

UTILITIES

There is Ultrafast Broadband available in the area and there are no known mobile coverage issues.

The property is connected to all mains and operates on gas central heating.

EPC D

West Berkshire Council Band B

LEASEHOLD DETAILS

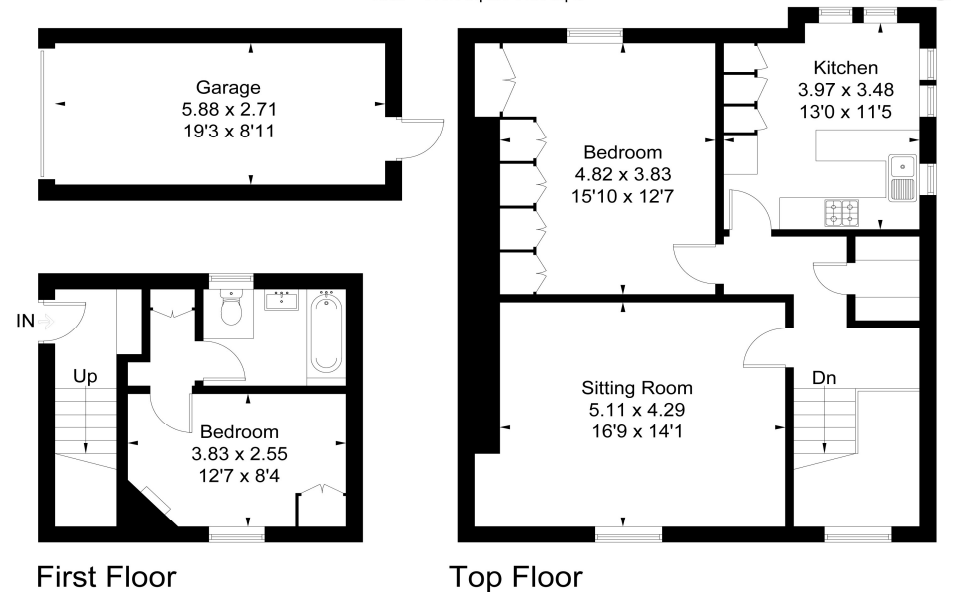
Block Managers: Square Properties Ltd
157 years left on the lease.

Maintenance Charge £1600 per annum.
Ground Rent – NIL

DIRECTIONS

What3words///bright.incomes.mops

Approximate Floor Area = 95.1 sq m / 1024 sq ft
Garage = 16 sq m / 172 sq ft
Total = 111.1 sq m / 1196 sq ft



Drawn for illustration and identification purposes only by fourwalls-group.com 316117



Newbury Office

43 Northbrook Street, Newbury, Berkshire RG14 1DT
01635 552552 | newbury@winkworth.co.uk

winkworth.co.uk/newbury

Winkworth

See things differently.