



**GURNEY DRIVE, READING, BERKSHIRE, RG4 7LG**  
**£1,795 PER MONTH UNFURNISHED**

**TWO BEDROOM BUNGALOW THAT HAS BEEN RECENTLY REFURBISHED AND LOCATED IN A QUIET CUL-DE-SAC IN THE SOUGHT AFTER AREA OF CAVERSHAM.**

Reading | 0118 4022 300 | [reading@winkworth.co.uk](mailto:reading@winkworth.co.uk)

**Winkworth**

for every step...

[winkworth.co.uk](http://winkworth.co.uk)



Winkworth  
for every step...

## DESCRIPTION:

Modern two bedroom bungalow located in a quiet cul-de-sac in the sought after area of Caversham. It has two double bedrooms, sitting room, dining room, conservatory, bathroom and separate kitchen. To the front of the property there is a driveway with mature shrubs. To the rear there is an enclosed garden with lawn, fruit trees and a shed. Unfurnished, Available 24th August 2024.

## AT A GLANCE

- Two bedroom Bungalow located in a quiet cul-de-sac
- Quiet cul-de-sac location
- Off road parking driveway
- Secluded rear garden
- Council tax band D
- Unfurnished
- Available 24th August

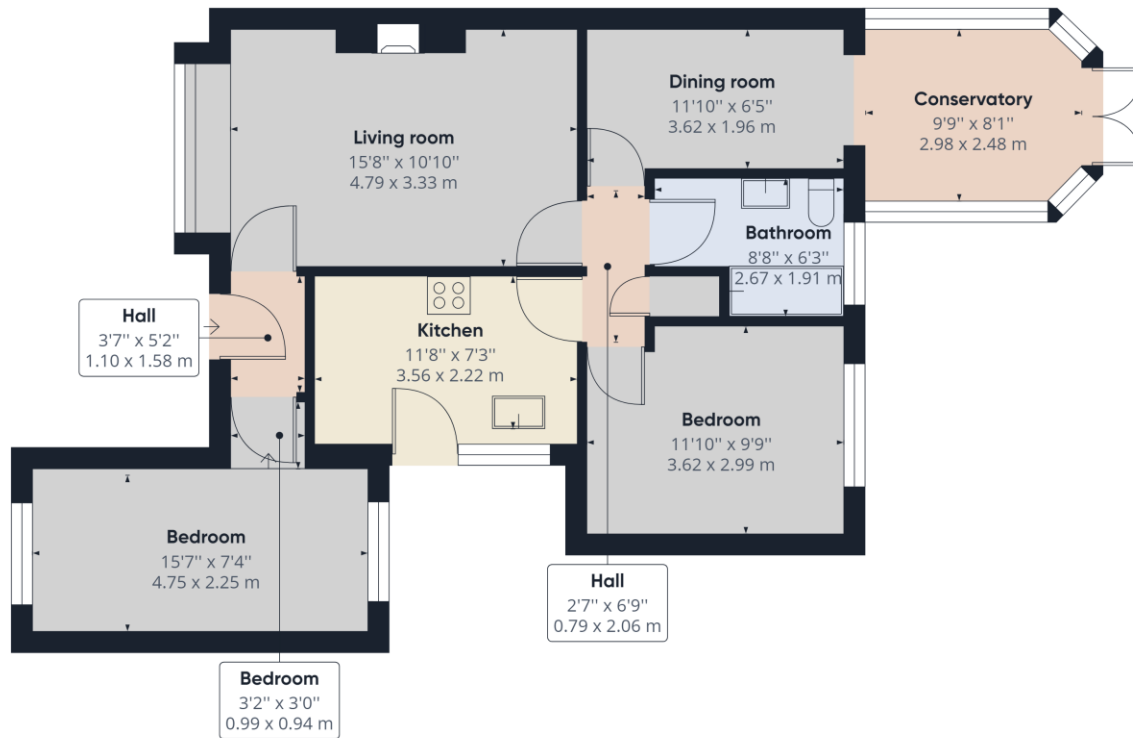


Winkworth  
for every step...



Winkworth  
for every step...





Approximate total area<sup>(1)</sup>  
 760.10 ft<sup>2</sup>  
 70.62 m<sup>2</sup>

(1) Excluding balconies and terraces

While every attempt has been made to ensure accuracy, all measurements are approximate, not to scale. This floor plan is for illustrative purposes only.

GIRAFFE360

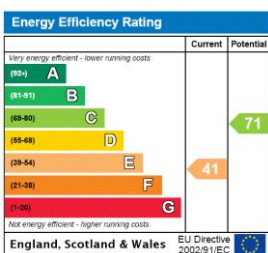
This floorplan is for illustration purposes only and is not to scale. The position and size of doors, windows, appliances and other features are approximate.

Deposit: £2,071.15

Holding Deposit: £414.23

Council Tax Band: D

Where no figures are shown, we have been unable to ascertain the information. All figures that are shown were correct at the time of printing.



Reading | 0118 4022 300 | reading@winkworth.co.uk



for every step...

winkworth.co.uk

Winkworth wishes to inform prospective buyers and tenants that these particulars are a guide and act as information only. All our details are given in good faith and believed to be correct at the time of printing but they don't form part of an offer or contract. No Winkworth employee has authority to make or give any representation or warranty in relation to this property. All fixtures and fittings, whether fitted or not are deemed removable by the vendor unless stated otherwise and room sizes are measured between internal wall surfaces, including furnishings.