



LORDSHIP LANE, EAST DULWICH, LONDON, SE22  
OIEO £375,000 LEASEHOLD

**A CHARMING AND SPACIOUS FLAT,  
SITUATED IN A PRIME LOCATION IN SE22  
CLOSE TO DULWICH VILLAGE.**

Dulwich | 020 8299 2722 | [dulwich@winkworth.co.uk](mailto:dulwich@winkworth.co.uk)

Tenure Leasehold | Council Tax Band B – London Borough of Southwark |

**Winkworth**

[winkworth.co.uk](http://winkworth.co.uk)

See things differently

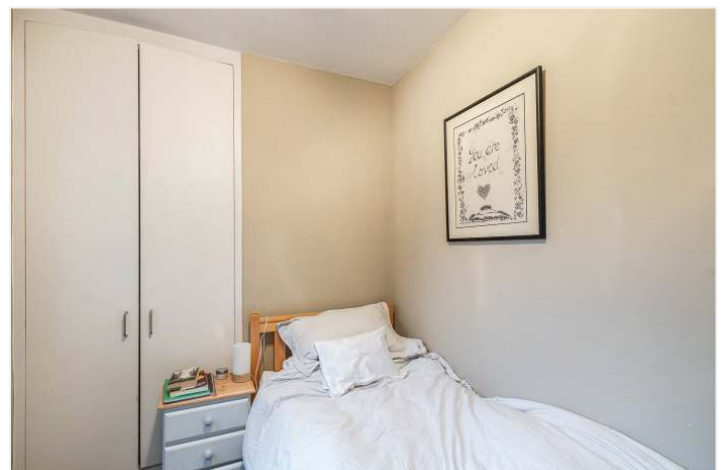


## DESCRIPTION:

A charming and spacious flat, situated in a prime location in SE22 close to Dulwich Village. This delightful first-floor two-bedroom flat is located within an impressive Victorian building in the heart of East Dulwich. The property features an open-plan kitchen/reception with modern fixtures, appliances, and fittings. It boasts a generously sized master double bedroom, a spacious second bedroom, and a contemporary bathroom. The flat benefits from its location on the bustling Lordship Lane, with bars, restaurants, the Picture House cinema, and a variety of local amenities right on your doorstep. However, despite being in the centre of East Dulwich, the flat remains wonderfully quiet, especially the bedrooms at the back, thanks to double glazing. For those looking for added convenience, the property comes with no chain and the owner is happy to include any furniture that belongs to them.

## AT A GLANCE

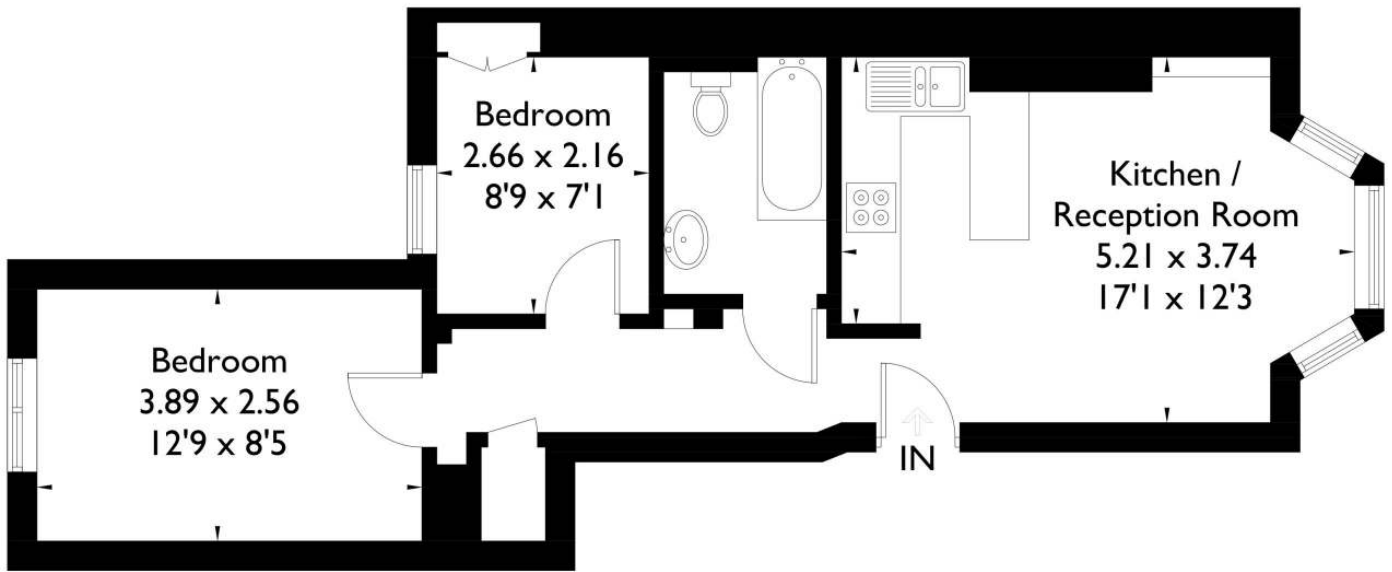
- Two Bedrooms
- Victorian Flat
- Open Plan Kitchen-Reception
- Modern Kitchen & Bathroom
- Upper Floor
- Leasehold
- Close to Dulwich Park





# Lordship Lane, East Dulwich, SE22

Approximate Gross Internal Area = 45.2 sq m / 487 sq ft

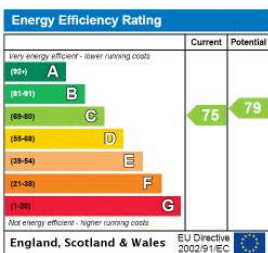


## Upper Ground Floor

FLOORPLANZ © 2015 0845 6344080 Ref: 150555

This plan is for layout guidance only. Drawn in accordance with RICS guidelines. Not drawn to scale unless stated. Windows & door openings are approximate. Whilst every care is taken in the preparation of this plan, please check all dimensions, shapes & compass bearings before making any decisions reliant upon them.

This floorplan is for illustration purposes only and is not to scale. The position and size of doors, windows, appliances and other features are approximate.



Dulwich | 020 8299 2722 | [dulwich@winkworth.co.uk](mailto:dulwich@winkworth.co.uk)



[winkworth.co.uk](http://winkworth.co.uk)

See things differently

Winkworth wishes to inform prospective buyers and tenants that these particulars are a guide and act as information only. All our details are given in good faith and believed to be correct at the time of printing but they don't form part of an offer or contract. No Winkworth employee has authority to make or give any representation or warranty in relation to this property. All fixtures and fittings, whether fitted or not are deemed removable by the vendor unless stated otherwise and room sizes are measured between internal wall surfaces, including furnishings.