

## St Margaret's Terrace



PROPERTY

GROUP

# REFINED LIVING.

A renovation project consisting of  
two, newly refurbished apartments.



## St Margaret's Terrace

St Margaret's Terrace - situated in the heart of Cheltenham town centre and set back from the main High Street giving the owner access to all perks of living in the town centre with access to local amenities within the Brewery Quarter and just a short walk to bars and restaurants.





## Apartment 2.



This beautiful apartment with traditional high ceilings and original cornice detailing has been completely renovated throughout. Boasting a brand new traditional shaker style kitchen with fully fitted CDA appliances and a solid oak worktop.

Upon entering the property you are welcomed with a generously sized hallway leading onto either the large double bedroom and bathroom or the spacious living room and kitchen area.

The property benefits from engineered oak flooring throughout with great quality carpet in the bedroom.





SPACE TO  
LIVE.

Living Room

Kitchen





The bathroom carries the traditional style through from the rest of the apartment with a shaker style basin unit, mosaic style floor tiles and a traditinal ceramic toilet.

# No.2



## Apartment 5.



This stunning top floor apartment has been completely renovated throughout. Boasting a brand new traditional shaker style kitchen with fully fitted CDA appliances and a solid oak worktop.

The open plan living room and kitchen area has a fantastic breakfast bar perfect for entertaining or dining. Being on the Third floor the double aspect property benefits from stunning views from both the living/kitchen area and both bedrooms.

The property benefits from engineered oak flooring throughout with great quality carpets in the bedrooms.





Kitchen/Living Room



View







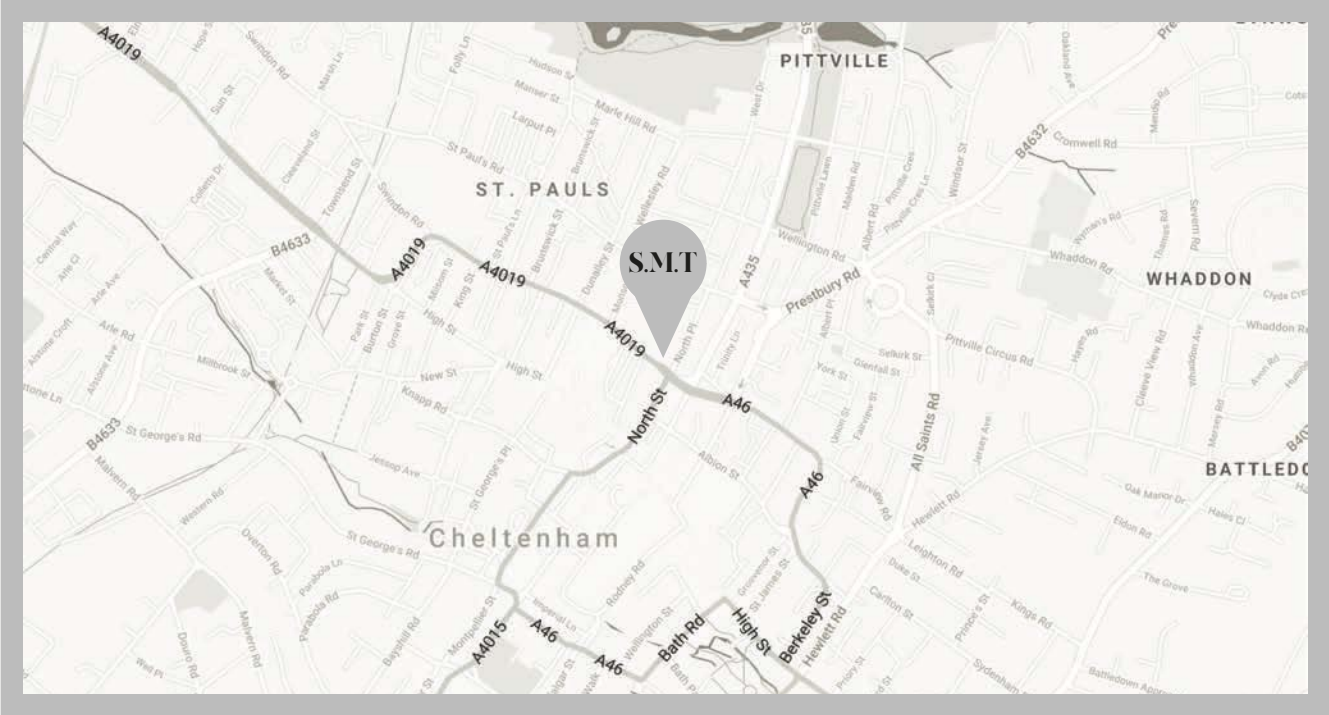







There really has been no expense spared when it comes to the regeneration of this fabulous two bedroom apartment. If you're in the market for something special then No.5 St Margaret's terrace could be just right for you.

# No.5



# Cheltenham

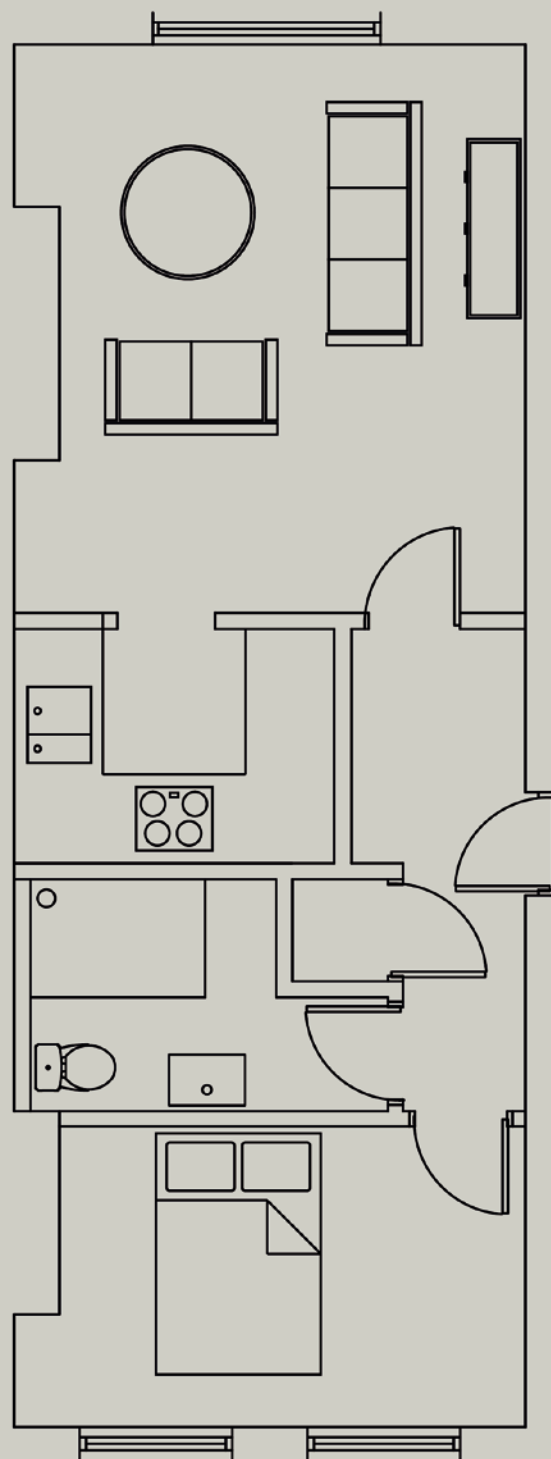


				
RACECOURSE	1.4 MILES	SHOP	ENJOY	DINE
28 annual events every year.	Cheltenham Spa Trainstation.	0.3 miles to John Lewis and Highstreet.	0.2 miles to The Brewery Quarter.	0.6 miles to Montpellier, Brasserie Blanc
1.1 miles, 3 minutes by car.	Direct links to Birmingham City Centre, 46 minutes.	6 minute walk from your front door.	3 minute walk from your front door.	12 minute walk from your front door.

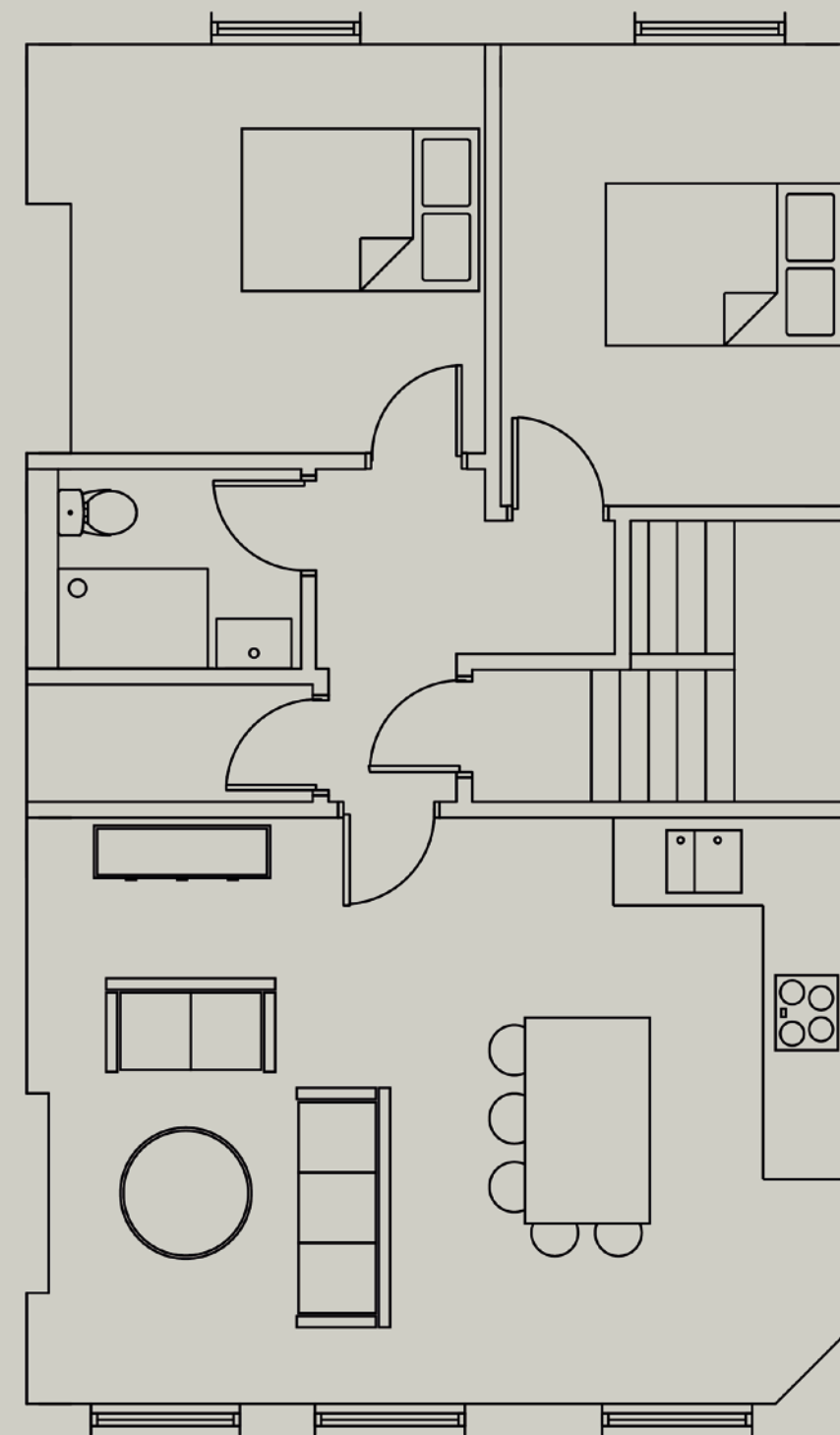
Cheltenham is well blessed culturally with a wealth of restaurants, bars, independent shops, award winning hotels and it’s famous horse racing festivals. The area boasts a magnitude of artisan bars and restaurants whilst maintaining the likes of retailer giant, John Lewis and more.



No.2 St Margaret's Terrace



No.5 St Margaret's Terrace





## St Margaret's Terrace



PROPERTY  
GROUP

**Winkworth**

Winkworth Cheltenham

T: 01242 386 586  
E: [cheltenham@winkworth.co.uk](mailto:cheltenham@winkworth.co.uk)