



Pennard Road, Shepherd's Bush, W12

£775,000 Share of Freehold

A fantastic two double bedroom garden flat on the ground floor of a mid-terrace Victorian house.

Reception | Kitchen | 2 Bedrooms | Bathroom | Basement | Cellar | Garden | 936 Sq Ft / 87 Sq M |
Council Tax Band D | EPC Rating Band D

Winkworth



LOCATION

Pennard Road is an attractive residential street which runs between Goldhawk Road and Uxbridge Road. Moments from Shepherd's Bush Green, Westfield London shopping centre, an abundance of independent shops, restaurants and an internationally famous music venue, as well as outstanding transport links. Shepherd's Bush Market Underground station is just moments away, with Shepherd's Bush also within easy reach, offering both Central line and London Overground services.

DESCRIPTION

Offered in good order throughout, the property offers accommodation comprising entrance hall, two double bedrooms, bathroom, kitchen with ample space for dining table and extended reception room with bi-fold doors leading to a private garden which is part decked and part laid with artificial grass. The flat further benefits from a good size cellar, ideal for storage.

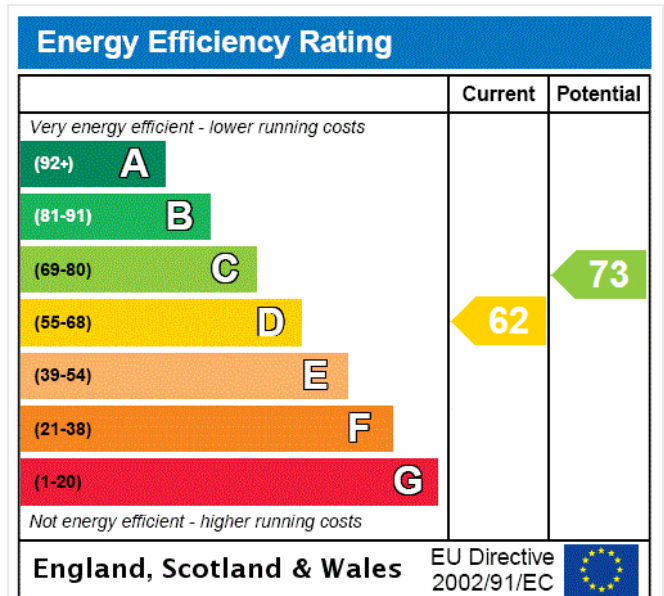


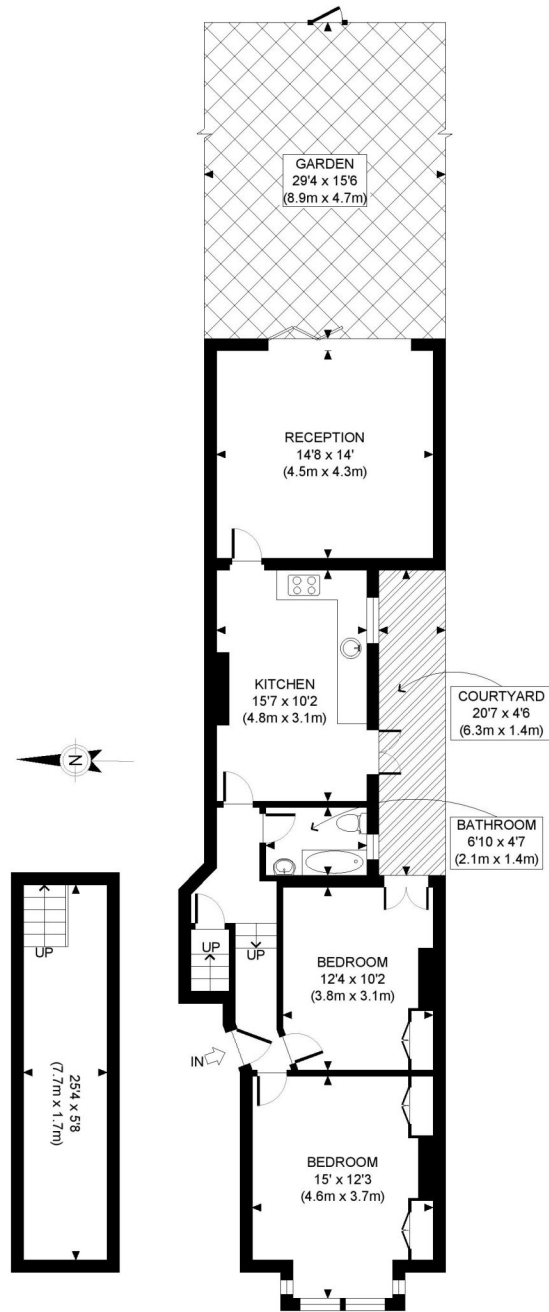


LOCAL AUTHORITY
Hammersmith & Fulham

TENURE
Share of Freehold.

PRICE: £775,000 Share of Freehold





BASEMENT
GROSS INTERNAL
FLOOR AREA 144 SQ FT

GROUND FLOOR
GROSS INTERNAL
FLOOR AREA 792 SQ FT

APPROX. GROSS INTERNAL FLOOR AREA EXCLUDING BASEMENT: 792 SQ FT/ 73.5 SQM
APPROX. GROSS INTERNAL FLOOR AREA INCLUDING BASEMENT: 936 SQ FT/ 87 SQM

PROPERTY PHOTO PLANS.CO.UK
ONE STOP SHOP FOR PROPERTY MARKETING

This plan is for illustrative purposes only and should be used as such by any prospective client. Whilst every attempt has been made to ensure the accuracy of the Floor Plan contained here, measurements of the doors, windows, rooms and any other items are approximate and no responsibility is taken for any errors, omissions, or misstatement. The services, systems and appliances shown have not been tested and no guarantee as to the operability or efficiency can be given.

The displayed square footage is taken from the floor plans with measurements created using the Royal Institute of Chartered Surveyors' Code of Practice for Measuring. These measurements are approximate and included for illustrative purposes only. Winkworth does not make any representation as to the accuracy of these measurements and you should seek to verify them for yourself. Winkworth accept no liability for any loss you may suffer if you rely on these measurements.

Shepherds Bush | 020 8735 3266 | shepherdsbush@winkworth.co.uk

Winkworth

for every step...

Under the Property Misdescriptions Act 1991, these Particulars are a guide and act as information only. All details are given in good faith and are believed to be correct at time of printing. Winkworth give no representation as to their accuracy and potential purchasers or tenants must satisfy themselves by inspection or otherwise as to their correctness. No employee of Winkworth has authority to make or give any representation or warranty in relation to this property.