



**CREBOR STREET, EAST DULWICH, LONDON, SE22**  
**£825,000 SHARE OF FREEHOLD**

**OFFERED TO THE MARKET IS THIS  
STUNNING THREE-BEDROOM SPLIT LEVEL  
MAISONNETTE LOCATED ON A QUIET**

Tenure Share of Freehold | Council Tax Band C - London Borough of Southwark |  
Service Charge TBC | Ground Rent TBC



## DESCRIPTION:

Offered to the market is this stunning three-bedroom split level maisonette located on a quiet residential street in the heart of SE22. The first floor comprises of a large kitchen/dining space which also has direct access down to the private section of the garden, up a level is the large living area and a third bedroom perfect for the home office setup. On the top floor where the loft has been converted are two large bedrooms and the family bathroom with fantastic views overlooking the London skyline. The location offers easy access to both Peckham Rye and Dulwich Park as well as a variety of fantastic school catchments and within easy distance to Lordship Lane which offers a variety of shops, bars and restaurants.

## AT A GLANCE

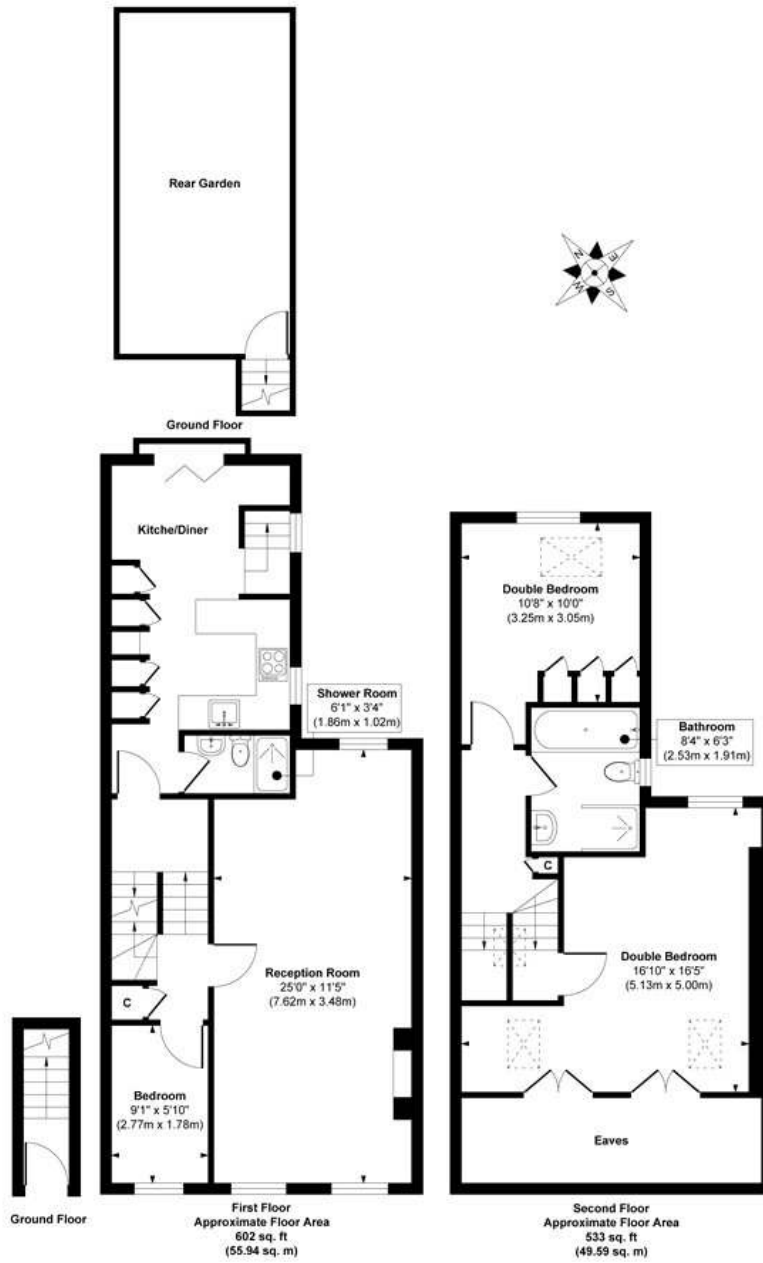
- Three Bedrooms
- Split Level Maisonette
- Two Receptions
- Kitchen-Diner
- Shower Room
- Bathroom With Separate Shower Cubicle
- Private Garden
- Share Of Freehold







Crebor Street



Approx. Gross Internal Floor Area 1135 sq. ft / 105.53 sq. m

Illustration for identification purposes only, measurements are approximate, not to scale.  
Produced by Elements Property

This floorplan is for illustration purposes only and is not to scale. The position and size of doors, windows, appliances and other features are approximate.

