



VICTORIA ROAD, DARTMOUTH
£365,000 FREEHOLD

A THREE BEDROOMED TERRACED HOME.

Dartmouth | 01803 832288
3a Market Street, Dartmouth, TQ6 9QE



for every step...

winkworth.co.uk



DESCRIPTION: A delightful home on the popular Victoria Road.

DIRECTIONS: From Dartmouth's Market Square turn right into Victoria Road. Carry on up Victoria Road past Victoria Heights. Take the next turn left, 241 Victoria Road will be half a dozen houses up on your left.

DESCRIPTION: The living has been beautifully extended to maximise the properties south facing aspect. Bright and sunny the kitchen/dining/family room will be the heart of the home. With double doors opening to the patio, summers will take on a whole new meaning. The formal sitting room has been retained creating a snug retreat for winter evenings.

- - 3 bedrooms
- - En-suite
- - Indoor/Outdoor Flow
- - Easy care terraced garden
- - Lovely conservatory extension

- - Freehold
- - Landscaped with outdoor entertaining a priority

POSTCODE: TQ6 9EQ

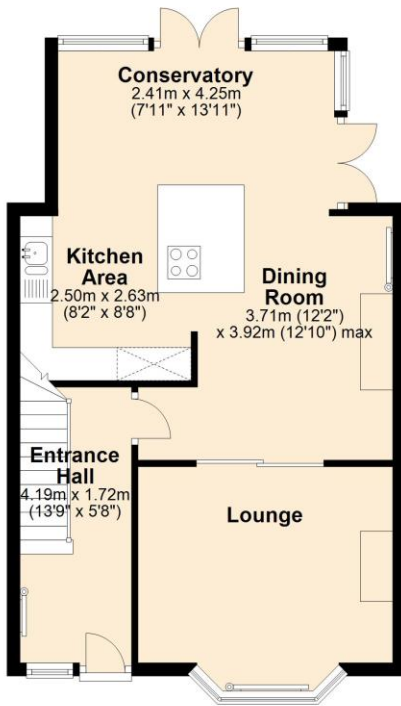
EPC RATING: D

SERVICES: All mains services are connected.

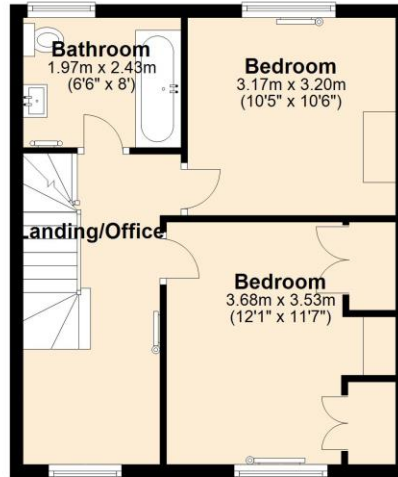




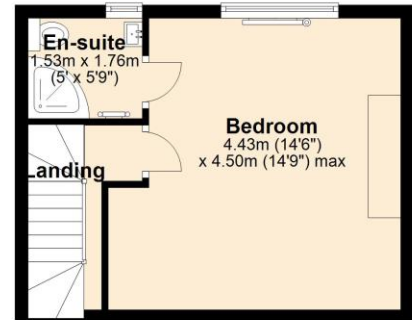
Ground Floor



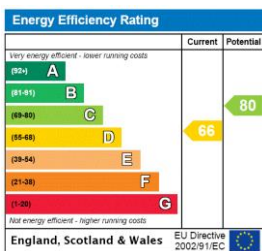
First Floor



Second Floor



This floorplan is for illustration purposes only and is not to scale. The position and size of doors, windows, appliances and other features are approximate.



Tenure: Freehold

Council Tax Band: C

Where no figures are shown, we have been unable to ascertain the information. All figures that are shown were correct at the time of printing.

Dartmouth | 01803 832288 | dartmouth@winkworth.co.uk
3a Market Street, Dartmouth, TQ6 9QE



for every step...

winkworth.co.uk

Winkworth wishes to inform prospective buyers and tenants that these particulars are a guide and act as information only. All our details are given in good faith and believed to be correct at the time of printing but they don't form part of an offer or contract. No Winkworth employee has authority to make or give any representation or warranty in relation to this property. All fixtures and fittings, whether fitted or not are deemed removable by the vendor unless stated otherwise and room sizes are measured between internal wall surfaces, including furnishings.