



BEATTY ROAD, LONDON, N16
OIEO £460,000 LEASEHOLD

BEAUTIFULLY MODERNIZED 1 BEDROOM FLAT SET ON A QUIET TREE LINED STREET IN STOKE NEWINGTON

Stoke Newington | | stokenewington@winkworth.co.uk

Winkworth



DESCRIPTION:

This stunning purpose-built flat, set on a sought-after tree-lined street in Stoke Newington, features a bright, open-plan living and kitchen area with a dedicated dining space, ideal for entertaining. The spacious master bedroom offers excellent storage, and both areas are thoughtfully separated by a beautifully remodelled bathroom.

Beatty road is nestled in the heart of N16, amongst a number of wonderful neighbouring Victorian streets. Close by is the popular and close-knit community of Stoke Newington Church Street, offering an array of independent shops, cafes and bars.

Butterfield Green is also located at the end of the road and the more expansive green space of Clissold Park sits 0.7 miles away. Transport links are well serviced with a number of excellent bus routes on hand and overground services from Rectory road providing direct access to Liverpool Street whilst Dalston provides links to West and East London.

Service Charge includes insurance and sinking fund.

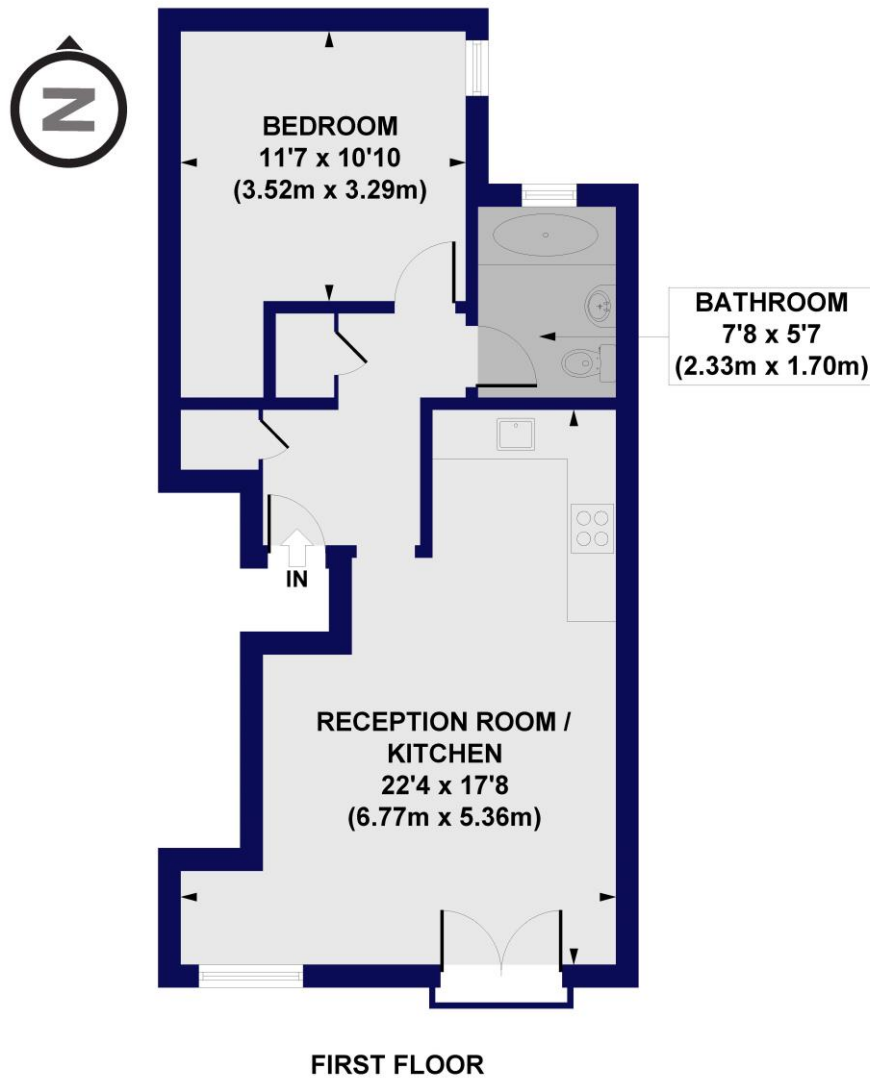
Any associated charges including, but not limited to, service charge, ground rent and sinking funds outlined in the marketing material is an approximation calculated using information provided by and described by the client at the time of instruction. The actual cost may be subject to change and therefore we recommend all interested parties carry out their own enquiries.

Winkworth



Winkworth

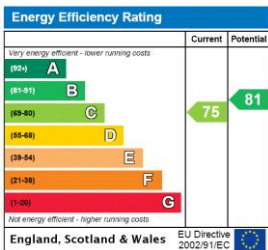
Beatty Road, N16
Approx. Gross Internal Floor Area 545 sq. ft / 50.64 sq. m



All measurements of walls, doors, windows, fittings and appliances, including their size and location, are shown as standard sizes and do not constitute any warranty or representation by the seller, their agent or CP Creative. Any intending purchaser must satisfy himself by inspection or otherwise as to the correctness of the information contained in these plans. This plan is for illustrative purposes only and should be used as such by any prospective purchasers.

Winkworth

This floorplan is for illustration purposes only and is not to scale. The position and size of doors, windows, appliances and other features are approximate.



Stoke Newington | | stokenewington@winkworth.co.uk



winkworth.co.uk

See things differently

Winkworth wishes to inform prospective buyers and tenants that these particulars are a guide and act as information only. All our details are given in good faith and believed to be correct at the time of printing but they don't form part of an offer or contract. No Winkworth employee has authority to make or give any representation or warranty in relation to this property. All fixtures and fittings, whether fitted or not are deemed removable by the vendor unless stated otherwise and room sizes are measured between internal wall surfaces, including furnishings.