



ADAMSON ROAD, LONDON, NW3 £1,950,000 SHARE OF FREEHOLD

Wonderfully presented four-bedroom, three-bathroom upper duplex family apartment spanning 1628 sq ft is situated on the second and third floors of this charming semi-detached period house. The apartment is finished to a high standard throughout and comprises a spacious reception room, a kitchen/dining room, a master double bedroom on the top floor with an en-suite and access to a balcony with excellent views, three further bedrooms and two bathrooms (one en-suite) on the second floor. Adamson Road is located within half a mile of England's Lane with its eclectic mix of cafes, shops and restaurants. The many amenities that Finchley Road has to offer, including the o2 Centre with a multiplex cinema and gym are within half a mile. Swiss Cottage (Jubilee line) and Belsize Park (Northern line) are the closest Underground Stations. Belsize Village is within 0.4 miles and Primrose Hill and Hampstead Village are both within 1.1 miles.

Master Bedroom with En Suite Shower | Second Double Bedroom with En Suite Bathroom | Two Further Bedrooms | Shower | Reception | Open Plan Kitchen / Dining Room | Balcony | Residents Parking

Winkworth

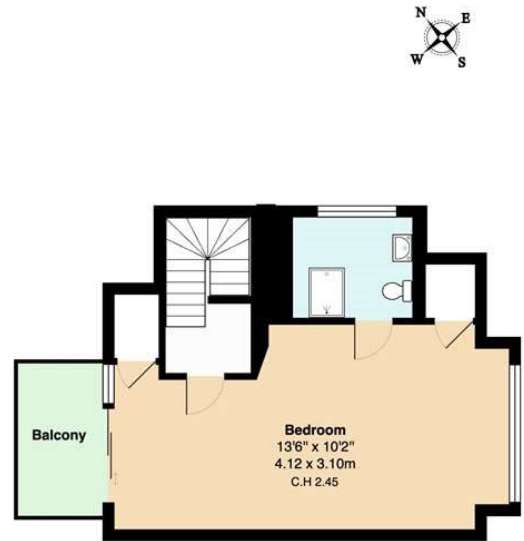
for every step...

winkworth.co.uk/west-hampstead





2nd Floor



3rd Floor

Adamson Rd, Belsize Park, London NW3

Total Gross Area: 1628 ft² ... 151.3 m² (excluding balcony)

All measurements are approximate and for identification guideline purposes only, not to scale.
Compliant with the RICS code of measuring practice.





Tenure: Share of Freehold

Term: Expires - 24/06/3009

Service Charge: £3,700 per annum

Council Tax Band: E

Where no figures are shown, we have been unable to ascertain the information. All figures that are shown were correct at the time of printing.

Where no figures are shown, we have been unable to ascertain the information. All figures that are shown were correct at the time of printing. These particulars are not an offer or contract, nor part of one. You should not rely on statements by Winkworth in the particulars or by word of mouth or in writing "information" as being factually accurate about the property, its condition or its value. Winkworth does not have any authority to make any representations about the property, and accordingly any information given is entirely without responsibility on the part of the agents, seller(s) or lessor(s). These particulars are prepared on the basis of the information supplied by our client and are a rough guide for information only. The photographs show only certain parts of the property. We are not able to check all of the information and therefore are unable to guarantee accuracy. All interested parties are therefore advised to undertake all necessary inspections and checks that they deem appropriate. Where displayed, the square footage is taken from the floor plans, which are created by an independent supplier. These measurements are approximate and included for illustrative purposes only. The measurements may vary. Winkworth does not make any representation as to the accuracy of these measurements and you should seek to verify them for yourself. Winkworth accept no liability for any loss you may suffer if you rely on these measurements. All fixtures and fittings, whether fitted or not are deemed removable by the vendor unless stated. Any reference to alterations to, or use of, any part of the property does not mean that any necessary planning, building regulations or other consent has been obtained. Amenities and appliances have not been tested

West Hampstead | 142 West End Lane, London, NW6 1SD | 020 7483 7602 |

westhampstead@winkworth.co.uk

winkworth.co.uk/west-hampstead



for every step...

Winkworth wishes to inform prospective buyers and tenants that these particulars are a guide and act as information only. All our details are given in good faith and believed to be correct at the time of printing but they don't form part of an offer or contract. No Winkworth employee has authority to make or give any representation or warranty in relation to this property. All fixtures and fittings, whether fitted or not are deemed removable by the vendor unless stated otherwise and room sizes are measured between internal wall surfaces, including furnishings.