



PARADISE ROAD, OXFORDSHIRE, RG9 1TP
£1,600,000

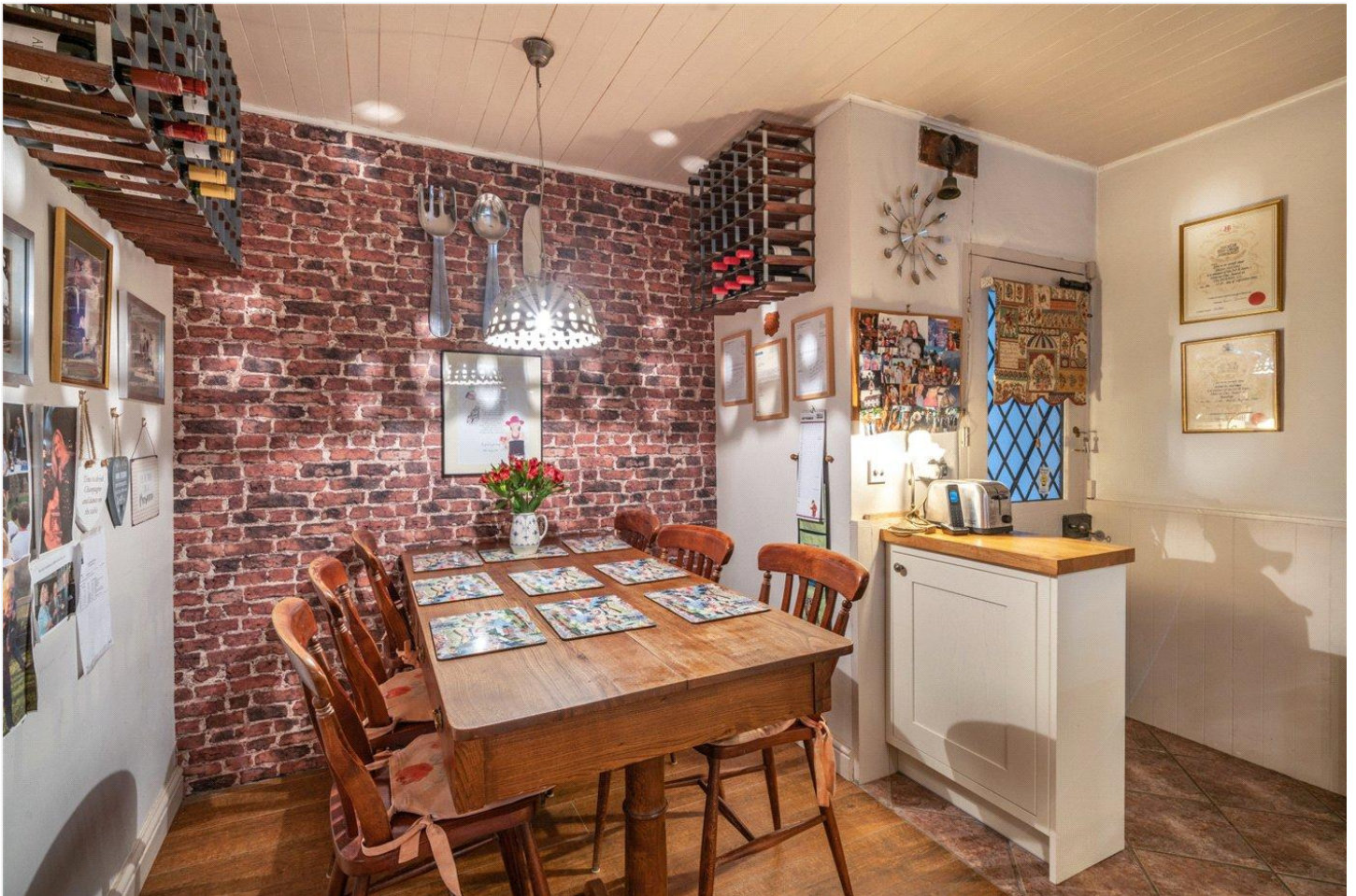
ANCASTLE HOUSE IS A REMARKABLE GRADE II LISTED TUDOR DETACHED COTTAGE, SPANNING OVER 3,600 SQ FT

Reading | 0118 4022 300 | reading@winkworth.co.uk

Winkworth

for every step...

winkworth.co.uk



DESCRIPTION:

Ancastle House is a remarkable Grade II Listed Tudor detached cottage, originally constructed around 1580, with later additions in the Victorian era and the 1990s. Spanning over 3,600 sq ft of versatile living space, it has preserved many of its original features, exuding an abundance of character and charm.

Located just a short stroll from Henley's High Street, with its array of boutique shops, pubs, and restaurants, Ancastle House holds a rich history. During Victorian times, it was known as The Old Dairy, and the current owners have a painting depicting a donkey and cart parked outside, ready to deliver milk to Henley. In the early 1900s, the house's name was changed to Ancastle Cottage, thought to be derived from the nearby site where a windmill once stood. The name was later updated to Ancastle House to reflect the size of the property.









This floorplan is for illustration purposes only and is not to scale. The position and size of doors, windows, appliances and other features are approximate.

Tenure: Freehold

Council Tax Band: G

Where no figures are shown, we have been unable to ascertain the information. All figures that are shown were correct at the time of printing.

Reading | 0118 4022 300 | reading@winkworth.co.uk

Winkworth

for every step...

winkworth.co.uk

Winkworth wishes to inform prospective buyers and tenants that these particulars are a guide and act as information only. All our details are given in good faith and believed to be correct at the time of printing but they don't form part of an offer or contract. No Winkworth employee has authority to make or give any representation or warranty in relation to this property. All fixtures and fittings, whether fitted or not are deemed removable by the vendor unless stated otherwise and room sizes are measured between internal wall surfaces, including furnishings.