



HARTINGTON COURT, HARTINGTON ROAD, LONDON, W4  
**£2,100 PER MONTH PART FURNISHED**

## A WONDERFUL TOP FLOOR TWO BEDROOM PROPERTY WITH RIVER VIEWS

Chiswick | 020 8994 7096 | [chiswick@winkworth.co.uk](mailto:chiswick@winkworth.co.uk)

**Winkworth**

for every step...

[winkworth.co.uk](http://winkworth.co.uk)



## **DESCRIPTION:**

A wonderfully bright and expansive top floor two bedroom property set within this stylish art deco building overlooking the River Thames.

This unique property comprises of two double bedrooms, a luminous living room with wooden floors, and modern bathroom and kitchen.

Due to the size, location and fashionable building, we expect this to let quickly so early viewing is recommended.

EPC: E

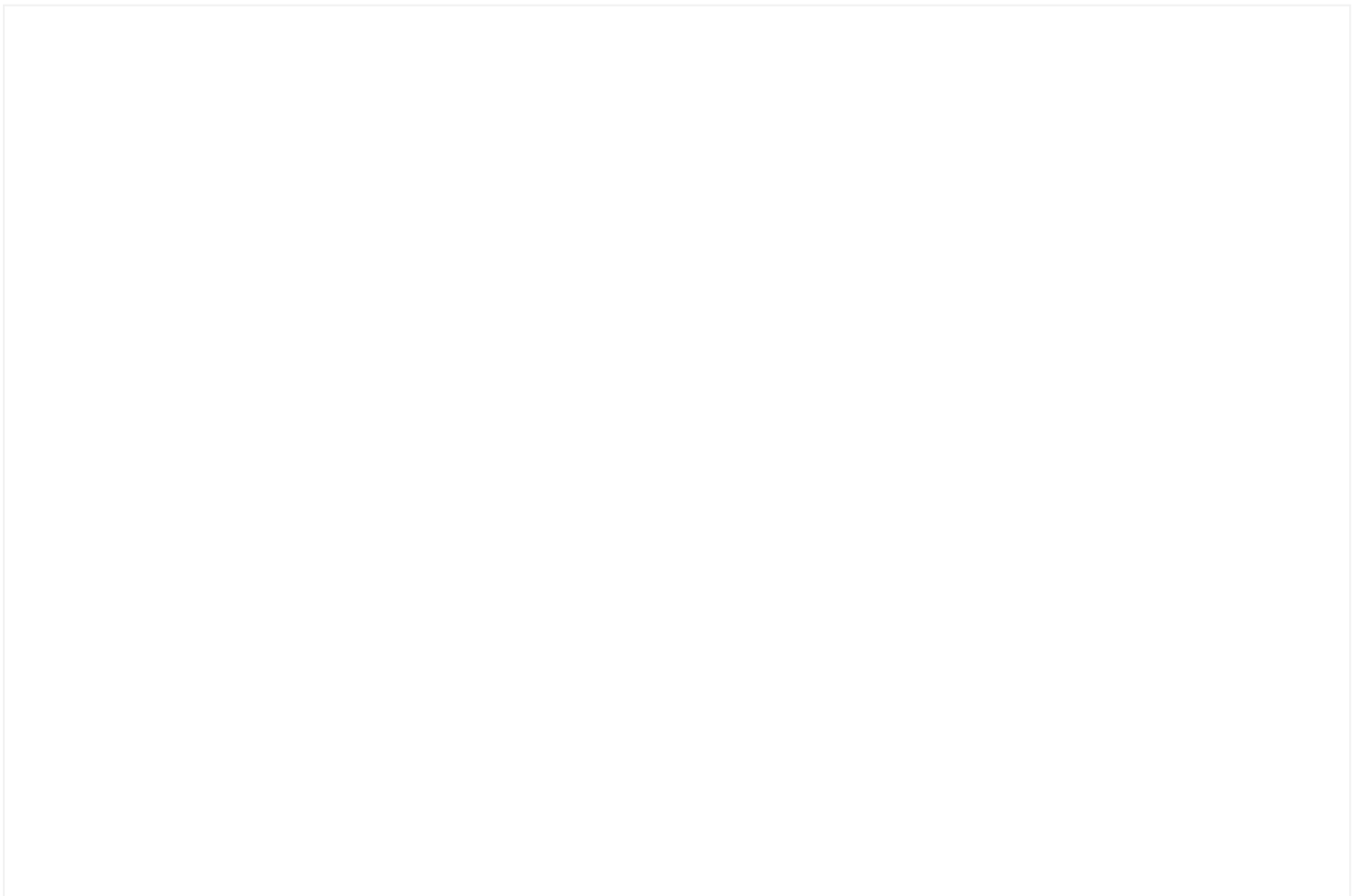
Council Tax Band: E/Hounslow Borough

1 week Holding deposit: £484.61

5-week Security deposit: £2,423.08

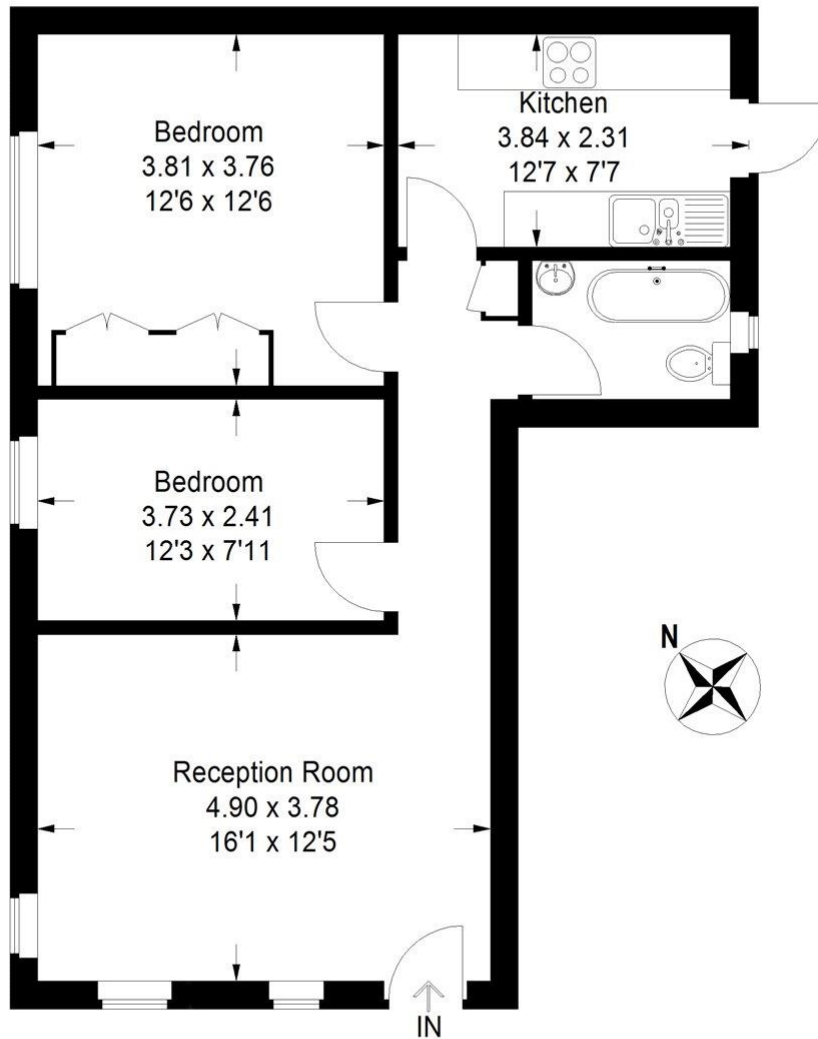
## **ACCOMMODATION**

Long Let,  
2 Bedrooms,  
1 Reception Room  
1 Bathroom,  
Upper Floor with Lift,  
Communal Gardens,  
Off Street Parking,  
River View,  
Part Furnished



# Hartington Court

Approximate Gross Internal Area = 60.8 sq m / 654 sq ft



## Second Floor

Illustration for identification purposes only, measurements are approximate, not to scale. FloorplansUsketch.com © 2017 (ID393596)

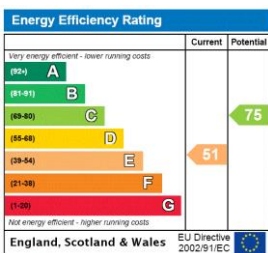
This floorplan is for illustration purposes only and is not to scale. The position and size of doors, windows, appliances and other features are approximate.

**Deposit:** £2,423.08

**Holding Deposit:**

**Council Tax Band:** E

Where no figures are shown, we have been unable to ascertain the information. All figures that are shown were correct at the time of printing.



Chiswick | 020 8994 7096 | [chiswick@winkworth.co.uk](mailto:chiswick@winkworth.co.uk)

**Winkworth**

for every step...

[winkworth.co.uk](http://winkworth.co.uk)

Winkworth wishes to inform prospective buyers and tenants that these particulars are a guide and act as information only. All our details are given in good faith and believed to be correct at the time of printing but they don't form part of an offer or contract. No Winkworth employee has authority to make or give any representation or warranty in relation to this property. All fixtures and fittings, whether fitted or not are deemed removable by the vendor unless stated otherwise and room sizes are measured between internal wall surfaces, including furnishings.