



**REGNUM APARTMENTS, 6 WHELER STREET, LONDON, E1**  
**£645 PER WEEK FURNISHED**

**A SUPERB PENTHOUSE APARTMENT JUST MOMENTS AWAY FROM SPITALFIELDS MARKET**

Shoreditch | 020 7749 7650 | [shoreditch@winkworth.co.uk](mailto:shoreditch@winkworth.co.uk)

Tenant Fees Apply: Details of fees for tenant referencing, tenancy agreement admin fees and renewal fees are available on the Winkworth website and the link can be found with the displayed rent for the property. Tenants should ensure they are fully conversant with these upfront fees and other costs that are involved at the outset of the tenancy before making an offer to rent and your local Winkworth office will provide written details upon request.

[winkworth.co.uk](http://winkworth.co.uk)

**Winkworth**

See things differently





## DESCRIPTION:

A stunning penthouse apartment split across two floors at the top of a stylish boutique development tucked away on the edge of historic Spitalfields.

This impeccable apartment benefits from over 840sq ft of internal space and has a spacious East facing terrace providing superb rooftop views. It briefly comprises two spacious double bedrooms, ensuite shower room off the master bedroom, separate bathroom, large lounge with dining area and a high specification open-plan kitchen which receives an abundance of natural light due to the presence of skylights.

The whole property has been finished to an impeccable standard throughout and is also offered furnished. It is conveniently located just minutes from Liverpool Street Station, Shoreditch High Street Station and Spitalfields market with its many shops and amenities is just 100m away

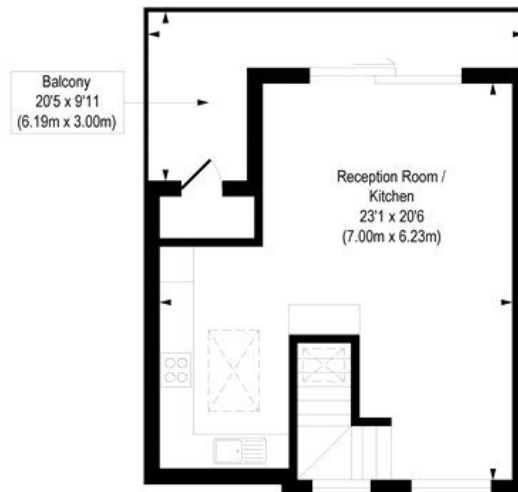
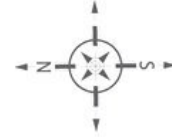
**Winkworth**





**Winkworth**

Regnum Apartments, Wheler Street, E1  
Approx. Gross Internal Floor Area 820 sq. ft / 76.15 sq. m



First Floor  
Gross Internal  
Floor Area 408 sq ft



Ground Floor  
Gross Internal  
Floor Area 412 sq ft

COMPLIANT WITH RICS CODE OF MEASURING PRACTICE Floorplan is for illustrative purposes only and is not to scale. Every attempt has been made to ensure the accuracy of the floorplan shown, however all measurements, fixtures, fittings and data shown are an approximate interpretation for illustrative purposes only. Liability for errors, omissions or mis-statement through negligence or otherwise is hereby excluded.

This floorplan is for illustration purposes only and is not to scale. The position and size of doors, windows, appliances and other features are approximate.

Shoreditch | 020 7749 7650 | shoreditch@winkworth.co.uk

**Winkworth**

*winkworth.co.uk*

See things differently

Winkworth wishes to inform prospective buyers and tenants that these particulars are a guide and act as information only. All our details are given in good faith and believed to be correct at the time of printing but they don't form part of an offer or contract. No Winkworth employee has authority to make or give any representation or warranty in relation to this property. All fixtures and fittings, whether fitted or not are deemed removable by the vendor unless stated otherwise and room sizes are measured between internal wall surfaces, including furnishings.