



NORTH STREET, READING, BERKSHIRE, RG4 8JA  
£2,250 PER MONTH UNFURNISHED

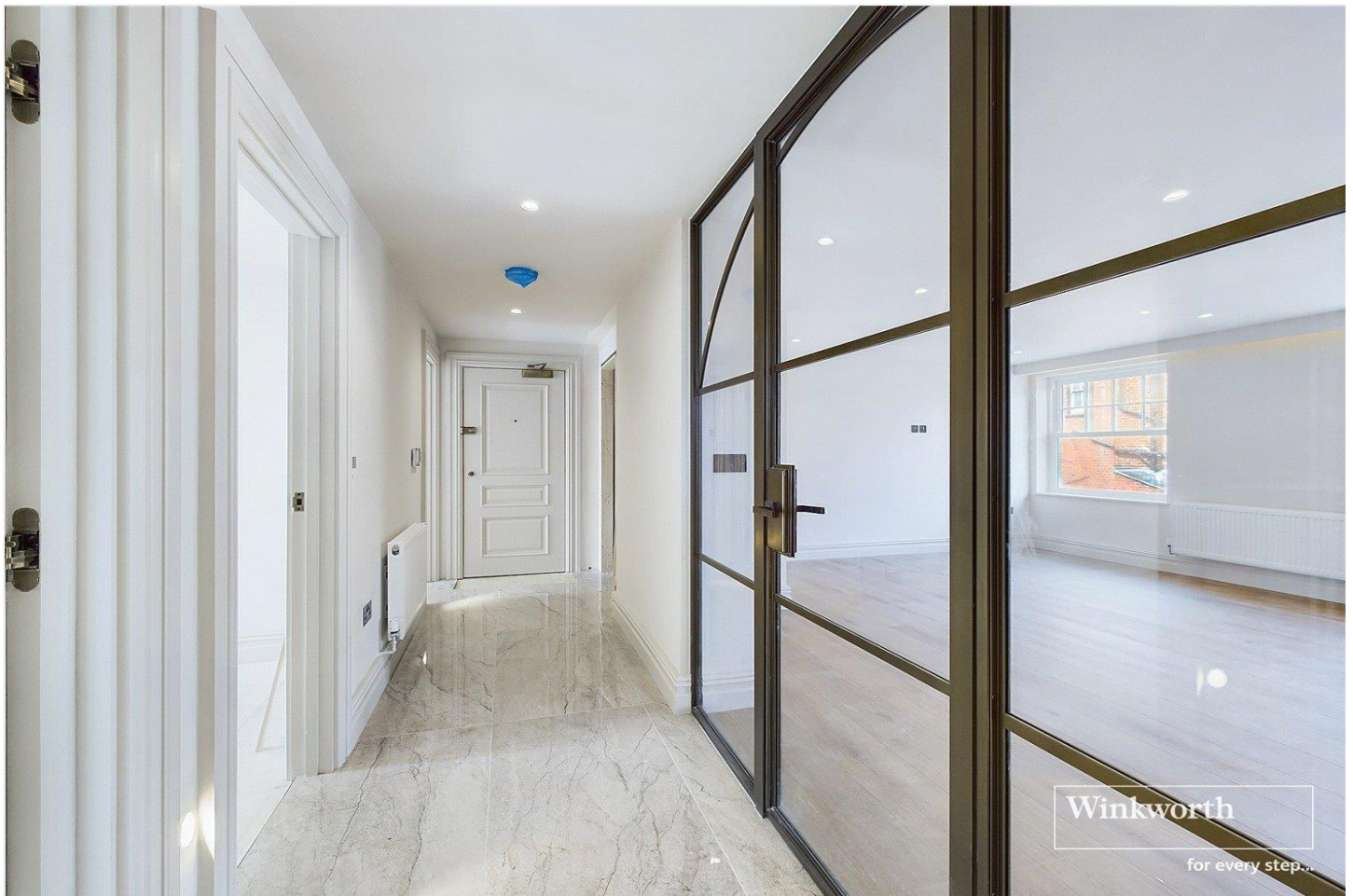
**BRAND NEW THREE BEDROOM APARTMENT  
LOCATED IN THE HEART OF CAVERSHAM.  
AVAILABLE 10TH SEPTEMBER.**

Reading | 0118 4022 300 | [reading@winkworth.co.uk](mailto:reading@winkworth.co.uk)

**Winkworth**

for every step...

[winkworth.co.uk](http://winkworth.co.uk)



## DESCRIPTION:

Brand new three bedroom first floor apartment in this bespoke gated development of just five new homes. Conveniently located in the heart of Caversham close to an excellent selection of restaurants, bars, cafes, shops and an easy walk to the River Thames and Reading Station. Set on the first floor of the development and occupying the entire floor the property is accessed from North Street with an off road parking space to the rear in an internal courtyard.

The apartment has been finished to a high standard throughout comprising entrance hall with a glass and bronze partitioned wall/doors opening into a spacious open plan living space featuring a high specification fitted kitchen with a range of integrated appliances. There are three generous bedrooms, the master bedroom has an en suite shower room and there is a further contemporary three piece bathroom. The property boasts a range of contemporary design features including; designer bathroom fittings, Cormar carpets to bedrooms, feature lighting throughout, bespoke cabinetry, ornate woodwork, skirting and architrave, bespoke joinery doors and brass ironmongery with hidden hinges, underfloor heating and a NIBE unit with Mechanical Heat Ventilation System.

Available 10th September 2024. Unfurnished.

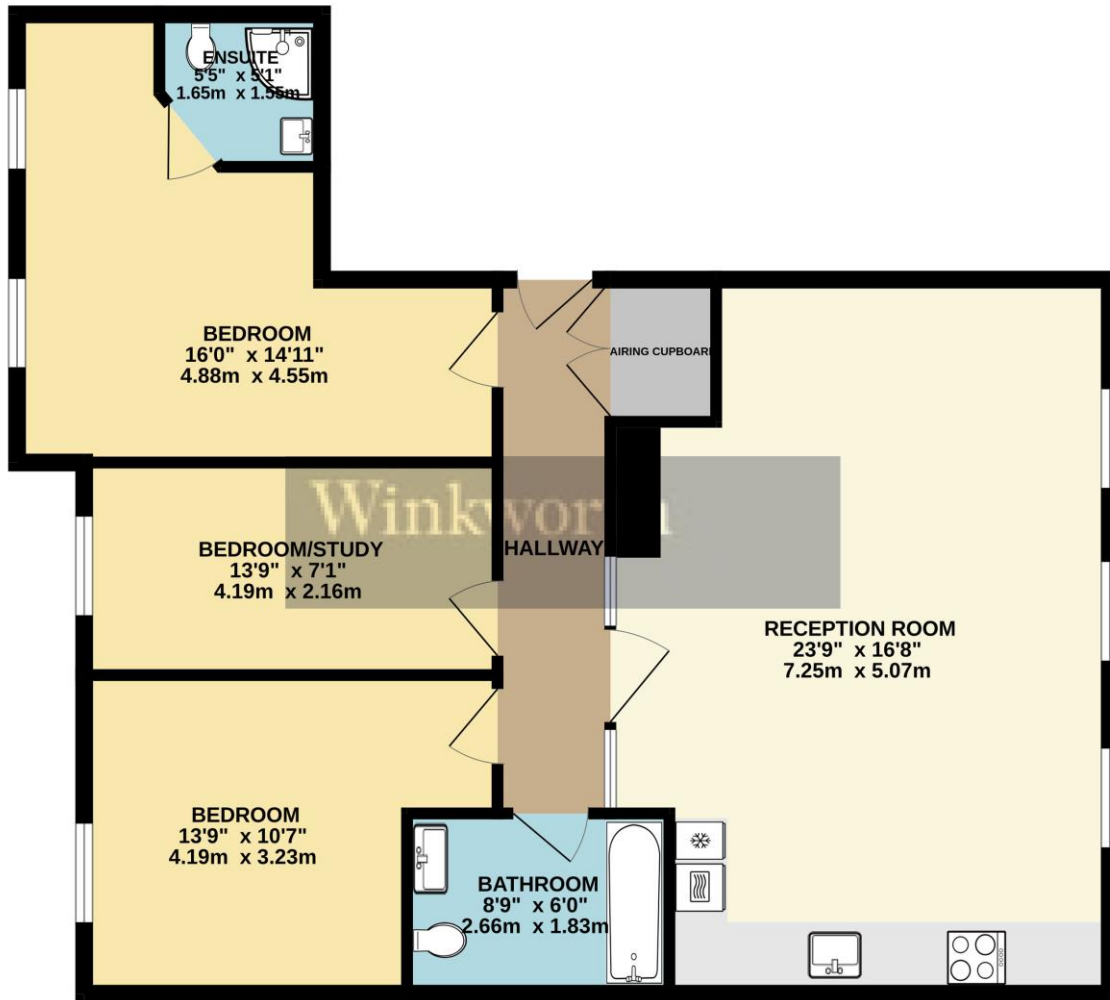
## AT A GLANCE

- Brand new apartment
- Three bedrooms
- Two bathrooms
- Allocated off road parking for one car
- Council tax TBC
- Awaiting EPC
- Available 10th September
- Unfurnished





FIRST FLOOR  
909 sq.ft. (84.4 sq.m.) approx.



TOTAL FLOOR AREA: 909 sq.ft. (84.4 sq.m.) approx.

Whilst every attempt has been made to ensure the accuracy of the floorplan contained here, measurements of doors, windows, rooms and any other items are approximate and no responsibility is taken for any error, omission or mis-statement. This plan is for illustrative purposes only and should be used as such by any prospective purchaser. The services, systems and appliances shown have not been tested and no guarantee as to their operability or efficiency can be given.  
Made with Metropix ©2024

This floorplan is for illustration purposes only and is not to scale. The position and size of doors, windows, appliances and other features are approximate.

**Deposit:** £2,596.15

**Holding Deposit:** £519.23

**Council Tax Band:** TBC

Where no figures are shown, we have been unable to ascertain the information. All figures that are shown were correct at the time of printing.

Reading | 0118 4022 300 | [reading@winkworth.co.uk](mailto:reading@winkworth.co.uk)

**Winkworth**

for every step...

[winkworth.co.uk](http://winkworth.co.uk)

Winkworth wishes to inform prospective buyers and tenants that these particulars are a guide and act as information only. All our details are given in good faith and believed to be correct at the time of printing but they don't form part of an offer or contract. No Winkworth employee has authority to make or give any representation or warranty in relation to this property. All fixtures and fittings, whether fitted or not are deemed removable by the vendor unless stated otherwise and room sizes are measured between internal wall surfaces, including furnishings.