



VERNON COURT, STANMORE, MIDDLESEX, HA7

£415,000 LEASEHOLD 927 YEARS APPROX REMAINING

WELL PRESENTED TWO BEDROOM GROUND FLOOR MAISONETTE WITH GARDEN

- **GROUND RENT APPROX £9 PER ANNUM**

Kingsbury | 020 8204 0000 | kingsbury@winkworth.co.uk

Winkworth

for every step...

winkworth.co.uk



A well-presented ground-floor maisonette featuring two double bedrooms and a reception room bathed in warm, natural light. The property boasts a well sized kitchen leading to a bright and inviting conservatory, which opens onto a generously sized well maintained private garden. Nestled on a peaceful residential road, this home is ideally located near Stanmore's popular shopping and dining amenities. Families will appreciate the proximity to highly regarded schools, including Stanburn, St. Joseph's Primary, Avanti House, and Park High Secondary, all within walking distance. For commuters, Canons Park Underground Station (Jubilee Line) is just one mile away, taking you from suburb to city in under 30 minutes. This property is an excellent choice for first-time buyers or buy-to-let investors. Viewing is highly recommended to truly appreciate all it has to offer.



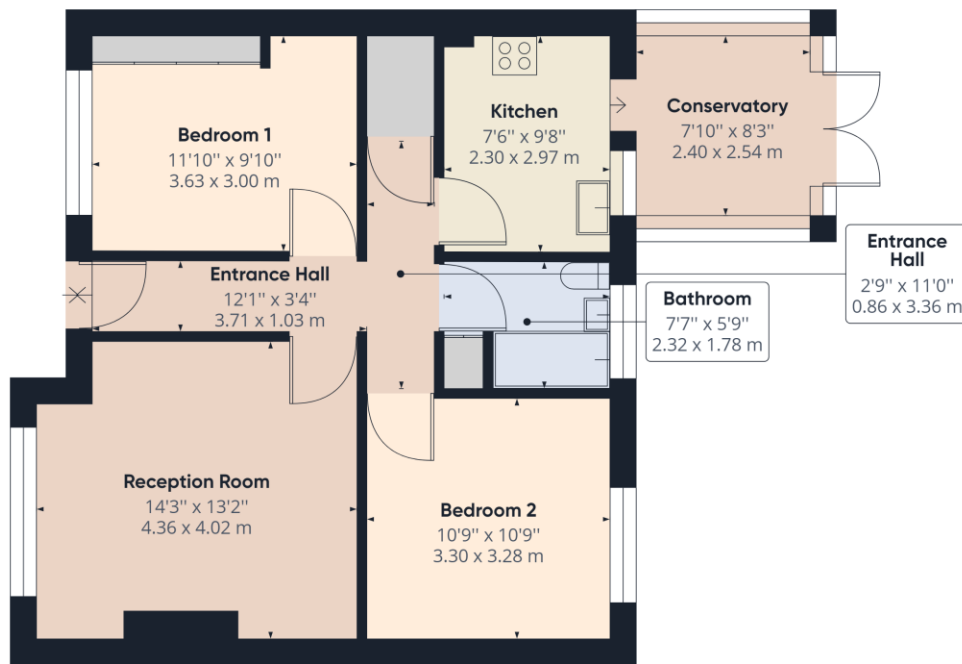
Winkworth

for every step...



Winkworth

for every step...



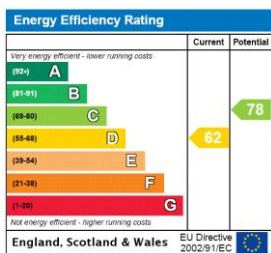
Approximate total area⁽¹⁾
699.07 ft²
64.95 m²

(1) Excluding balconies and terraces

While every attempt has been made to ensure accuracy, all measurements are approximate, not to scale. This floor plan is for illustrative purposes only.

GIRAFFE360

This floorplan is for illustration purposes only and is not to scale. The position and size of doors, windows, appliances and other features are approximate.



Tenure: Leasehold

Term: 927 year and 10 months

Service Charge: £0 per annum

Ground Rent: £ 9 Annually (subject to increase)

Council Tax Band: D - Harrow

Where no figures are shown, we have been unable to ascertain the information. All figures that are shown were correct at the time of printing.

Kingsbury | 020 8204 0000 | kingsbury@winkworth.co.uk



for every step...

winkworth.co.uk

Winkworth wishes to inform prospective buyers and tenants that these particulars are a guide and act as information only. All our details are given in good faith and believed to be correct at the time of printing but they don't form part of an offer or contract. No Winkworth employee has authority to make or give any representation or warranty in relation to this property. All fixtures and fittings, whether fitted or not are deemed removable by the vendor unless stated otherwise and room sizes are measured between internal wall surfaces, including furnishings.