



CLEVELAND CRESCENT, HERTFORDSHIRE, WD6
£475,000 FREEHOLD

AN UNMODERNISED THREE BEDROOM FAMILY HOUSE IN SOUTH BOREHAMWOOD

Borehamwood | 020 8953 8899 | borehamwood@winkworth.co.uk



DESCRIPTION:

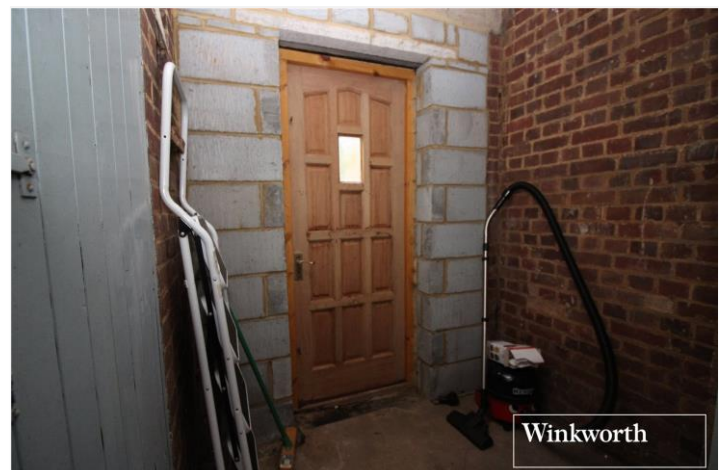
After being in the same family occupation since its construction over seventy years ago, this unmodernised three bedroom house represents an almost unique opportunity to create your own bespoke family home.

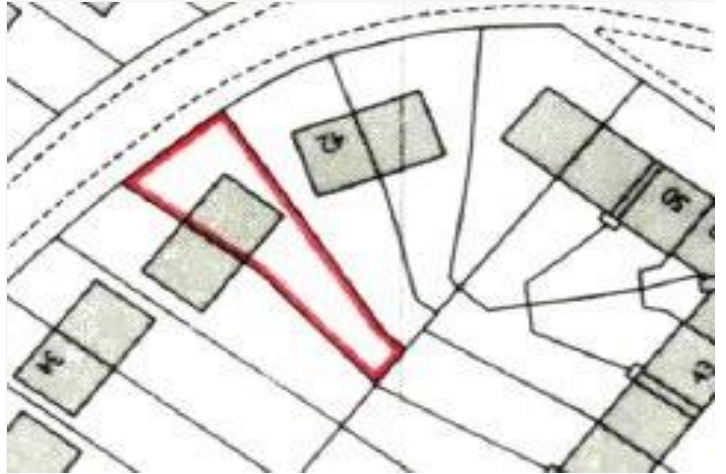
Offered for sale chain free, the property measures approaching 1000 square feet, is in need of complete refurbishment, which has been reflected in the price, and offers scope for extension subject to the usual planning consents.

Located in a quiet sought after turning on the South side of Borehamwood, several Ofsted rated "Good" and "Outstanding" Schools including Monksmead, Kenilworth and Yavneh are located nearby.

AT A GLANCE

- 3 Bedrooms
- South Borehamwood
- Chain Free
- Off Street Parking
- Southerly Rear Garden
- 968 Square Feet
- Guest Cloakroom
- Scope To Extend (Stpp)





Approximate Gross Internal Area = 89.9 sq m / 968 sq ft

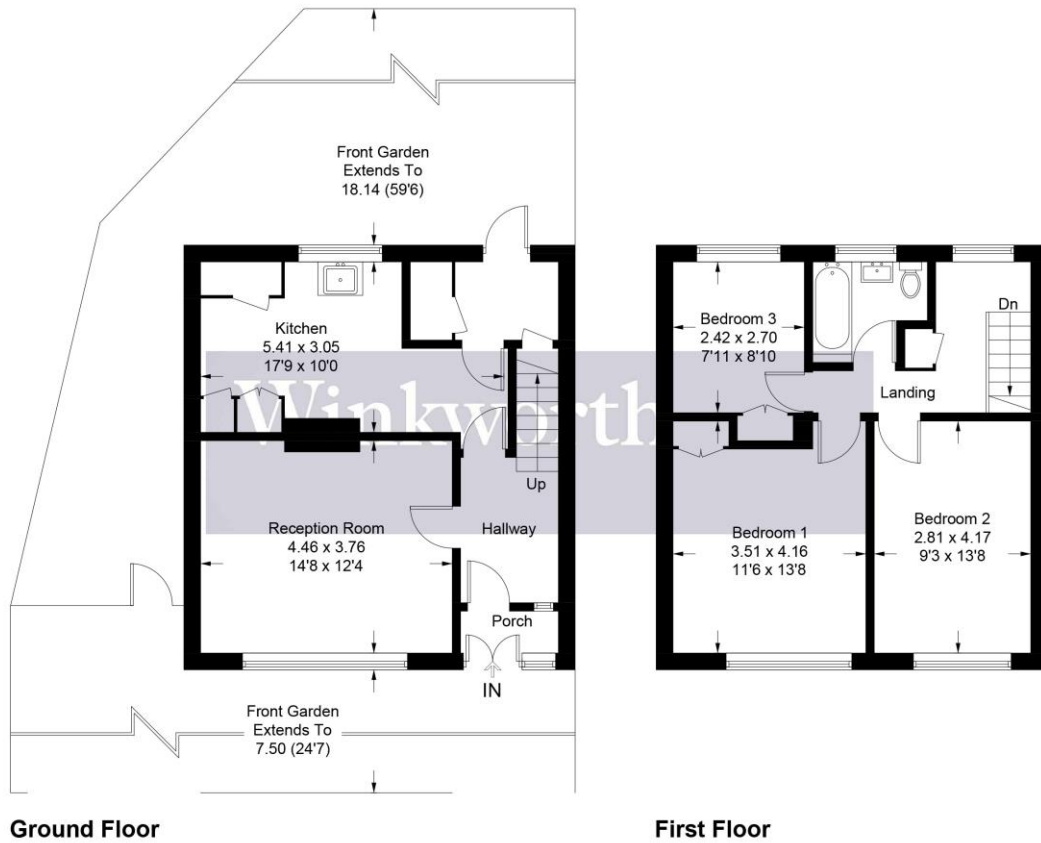
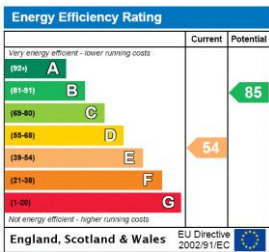


Illustration for identification purposes only, measurements are approximate, not to scale. Winkworth © 2025 (ID1157052)

This floorplan is for illustration purposes only and is not to scale. The position and size of doors, windows, appliances and other features are approximate.



Tenure: Freehold

Term: 0 year and 0 months

Service Charge: £0 per annum

Ground Rent: £ 0 Annually (subject to increase)

Council Tax Band:

Where no figures are shown, we have been unable to ascertain the information. All figures that are shown were correct at the time of printing.